

2016 ANNUAL REPORT



Some of these things are true, and some of them lies. But



Robust community engagement. Record outreach expansion. Purchases of major artworks by national and international artists. Inauguration of the Toni and Tim Urban International Artist-in-Residence Program and creation of the Rusty, Ellen and Jim Hubbell Photography Acquisition Fund. These are the results of hard work and creativity on the part of our extraordinary staff and the continued generosity of our members, board members, and donors.

The Art Center was filled with a wide variety of shows, activities, and programs in 2016. Our exhibitions presented artworks in all media by artists living around the world as well as closer to home, including a community photography showcase. The education department organized an array of scholarly, participatory, and entertaining programs for all ages, while our studio program offered a mind-boggling 409 classes with attendance of nearly 15,000.

Outreach activities grew exponentially as well with the Art Center collaborating with 24 partners involving 33 programs. We purchased major artworks for the permanent collections by national and international artists, such as Alice Aycock, Mark Bradford, Marlene Dumas, Laurel Nakadate, and Danh Vo with the financial support of multiple donors, and we received important gifts of photography from Joel Meyerowitz and Jeff Perry, among other donations. The Rusty, Ellen and Jim Hubbell Photography Acquisition Fund was also established in 2016 to support future purchases of photographs.

The year also saw important renovations to our facilities as well as significant advances in fundraising. Levitt Auditorium has new carpet, new lighting, and a new state-of-the-art projector. We enhanced our parking lot, increasing the number of parking spaces available to our visitors by nearly 10% by rearranging the configuration of our three front parking lots.

In addition, we experienced record fundraising totals in 2016 with the highly successful Arts & Ends event and nearly 300 attendees showed their support for the Art Center's future at *built, a* gala evening celebrating the Art Center's extraordinary architecture and unexpected architectural gems in the surrounding community.

We inaugurated the Toni and Tim Urban International Artist-in-Residence program with artist Orr Menirom; and perhaps most important, we created a new strategic plan to carry us into the future. This plan focuses on four initiatives: to enhance our permanent collections and exhibition program; to improve the ways people engage with the Art Center; to secure the financial future of the Art Center as well as our facilities; and to build awareness.

We have a lot of work to do, and helping us along the way are member groups Art Noir, Print Club, and Salon 4700. Each group had a banner year in 2016 with innovative engagement strategies and multiple novel events.

The success of these efforts and our ability to contribute to the growth of the Des Moines metro would not be possible without the support of our board of trustees, our members, our community of donors, our dedicated docents, and our extraordinary staff. We thank them all for helping us to create entirely unexpected experiences for every visitor.

Jeff Fleming
DIRECTOR

Kyle Krause
PRESIDENT, BOARD OF TRUSTEES
2014–2016

LEFT

The *Arts & Letters* exhibition offered visitors the opportunity to view illustrated literary works from the libraries of historic Salisbury House & Gardens and the University of Iowa alongside many rare works on paper from the Art Center collection.

ON THE COVER

Young visitors get a different perspective on a Glenn Brown painting.

Fifteen exhibitions invigorated widespread community engagement and participation in 2016 via numerous programs, including partnering with local historic Salisbury House & Gardens for *Arts & Letters*; a listening instruments invention workshop in conjunction with the annual *Iowa Artists* exhibition; and a community photography showcase in conjunction with *Vivian Maier: Through a Critical Lens*.

GRAAAFICAAA ITAAALIANAAA

January 22 – May 29, 2016

John Brady Print Gallery

Organized by the Des Moines Art Center

1 Arts & Letters

February 13 – May 1, 2016

Anna K. Meredith Gallery

Organized by the Des Moines Art Center

**Single-Channel 6: Collected
Peter Fischli & David Weiss –
*The Way Things Go***

February 26 – May 22, 2016

Pamela Bass-Bookey

and Harry Bookey Gallery

Organized by the Des Moines Art Center

**Toni And Tim Urban International
Artist-In-Residence: Orr Menirom**

March 8 – April 10, 2016

Lower level Richard Meier building

Organized by the Des Moines Art Center

2 Cy Twombly: Natural Histories

April 29 – August 14, 2016

Blank One Gallery

Organized by the Des Moines Art Center

3 Glenn Brown

May 21 – August 21, 2016

Anna K. Meredith Gallery

Organized by the Des Moines Art Center

**Single-Channel 6: Collected
Bill Viola – *Ascension***

May 27 – August 7, 2016

Pamela Bass-Bookey

and Harry Bookey Gallery

Organized by the Des Moines Art Center

4 Heavy Heavy Hangs Over Thy Head

June 10 – October 2, 2016

John Brady Print Gallery

Organized by the Des Moines Art Center



1

ABOVE
Carrie Schneider
(American, born 1979)
55 Reading Women, 2012–2014
HD film / Running Time: 4 hours
Courtesy of the artist and
Monique Meloche, Chicago

OPPOSITE TOP LEFT
Cy Twombly
(American, 1928–2011)
*Natural History Park I, Mushrooms:
No. IV*, 1974
Mixed media technique: lithograph,
granolithograph, collotype,
photochrome with collage, and
drawings by the artist on paper
29 11/16 x 22 inches
Des Moines Art Center Permanent
Collections; Purchased with funds from
Rose F. Rosenfield, 1988.7.4

OPPOSITE TOP RIGHT
Glenn Brown (British, born 1966)
Shallow Deaths, 2000
Oil on panel / 70 x 57.5 cm
Collection of the artist, London

OPPOSITE LOWER
Rockwell Kent
(American, 1882–1971)
*Heavy, Heavy Hangs over
Thy Head*, 1946
Crayon lithograph on paper
Sheet: 11 x 15 15/16 inches
Image: 9 1/8 x 12 inches
Des Moines Art Center Permanent
Collections; Gift of the Des Moines
Art Center Print Club; 2002.12

All Art Center collection photos by
Rich Sanders, Des Moines, unless otherwise noted.



2



3



4

5 Iowa Artists 2016: Jordan Weber
June 23 – October 9, 2016
John and Mary Pappajohn Gallery,
Richard Meier building sunken courtyard
Organized by the Des Moines Art Center

Iowa Artists 2016: Alex Braidwood
June 23 – October 9, 2016
Lower Richard Meier building
Organized by the Des Moines Art Center

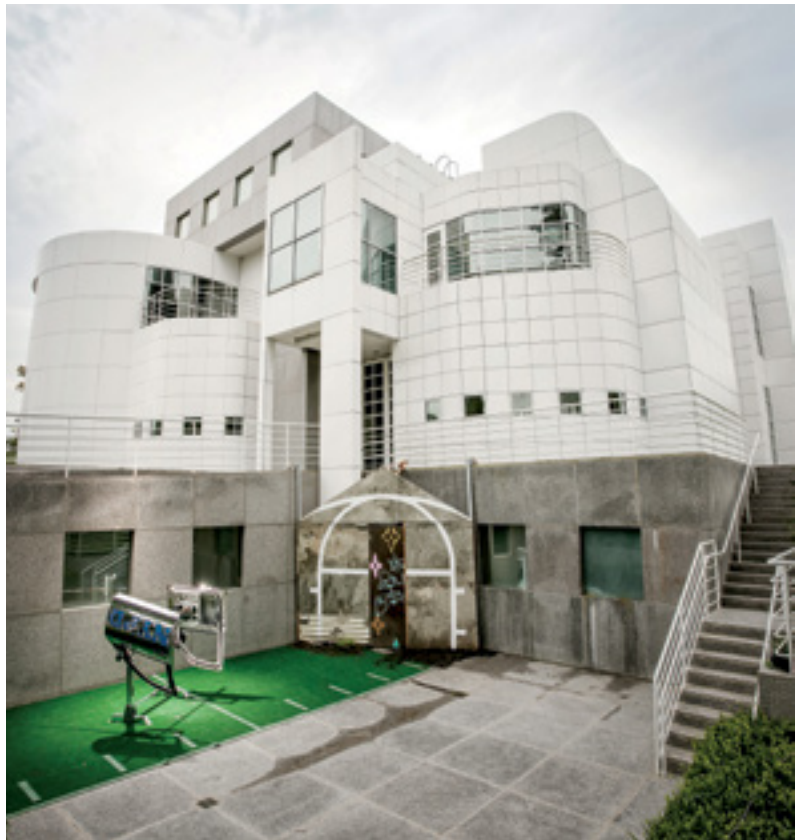
**Single-Channel 6: Collected
Anna Gaskell – *Mirror***
August 12 – November 3, 2016
Pamela Bass-Bookey
and Harry Bookey Gallery
Organized by the Des Moines Art Center

Whose Streets?
August 19, 2016 – January 15, 2017
Blank One Gallery
Organized by the Des Moines Art Center

**6 Vivian Maier:
Through a Critical Lens**
September 17, 2016 – January 22, 2017
Anna K. Meredith Gallery
Organized by the Maloof Collection,
courtesy Howard Greenberg Gallery,
New York

**When The Dog Bites,
When The Bee Stings**
October 7, 2016 – January 8, 2017
John Brady Print Gallery
Organized by the Des Moines Art Center

**7 Single-Channel 6: Collected
Ann Hamilton – *ghost...a
border act***
November 11, 2016 – February 19, 2017
Pamela Bass-Bookey
and Harry Bookey Gallery
Organized by the Des Moines Art Center



5



7

ABOVE TOP
Iowa Artists 2016: Jordan Weber
site-specific installation outside of
the Richard Meier building
Photo: Rick Lozier

ABOVE LOWER
Ann Hamilton (American, born 1956)
ghost...a border act, 2000
Running time: 30 minutes, video
Des Moines Art Center Permanent
Collections; Gift of Melva Bucksbaum
and Raymond J. Leary, 2003.273

OPPOSITE
Vivian Maier (American, 1926 – 2009)
New York City, September 10, 1955
Gelatin silver print; printed later
Image size: 12 x 12 inches
Paper size: 20 x 16 inches
©Vivian Maier/Maloof Collection, courtesy
Howard Greenberg Gallery, New York



The Art Center accessioned 206 works of art into the permanent collections in 2016 through purchases and gifts. We thank our generous donors who made these accessions possible.

Laurel Nakadate (American, born 1975)
Pikeville, Kentucky #1, from the "Relations" series, 2013

Framed Type-C print, laminated with UV protective film, mounted on Plexiglas

Frame: 31 × 46 × 1 1/2 inches

Sheet: 30 × 45 inches

Des Moines Art Center Permanent Collections;

Purchased with funds from the Kyle J.

and Sharon Krause Family Art Acquisition Fund, 2016.1



1

1 **Danh Vo** (Danish, born Vietnam, active Germany, born 1975)

Cuahtémoc Moctezuma, 2013

Cardboard boxes with gold leaf

Frame: 43 × 52 7/8 × 1 7/8 inches

Overall: 39 1/16 × 49 inches

Des Moines Art Center Permanent Collections;

Purchased with funds from the Edmundson

Art Foundation, Inc., 2016.4

2 **Mark Bradford** (American, born 1961)

Untitled, 2003

Lithograph on paper

Sheet (image): 32 11/16 × 32 3/4 inches

Des Moines Art Center Permanent Collections;

Purchased with funds from the Kyle J. and

Sharon Krause Family Art Acquisition Fund

and funds in memory of Kirk Blunck, 2016.14

Richard Meier (American, born 1934)

Nella, 2014

Silkscreen collage on paper

Sheet: 58 × 58 inches

Image: 46 × 46 inches

Des Moines Art Center Permanent Collections;

Gift of Richard Meier and Gary Lichtenstein

Editions, 2016.18

3 **René Magritte** (Belgian, 1898–1967)

Paysage de Baucis (Landscape of Baucis), 1966

Etching on paper

Sheet: 14 7/8 × 10 15/16 inches

Plate: 8 15/16 × 6 11/16 inches

Image: 8 7/16 × 6 3/16 inches

Des Moines Art Center Permanent Collections;

purchased with funds from the Edmundson

Art Foundation, Inc. and funds from the

Keith Shaver Trust in honor of Mary and

Roy Shaver, 2016.19

4 **Marlene Dumas** (South African, active

Netherlands, born 1953)

Light Blonde, 1996

Watercolor and ink on handmade paper

Frame: 57 5/16 × 34 5/16 × 1 1/4 inches

Sheet: 49 1/4 × 27 5/8 inches

Des Moines Art Center Permanent Collections;

purchased with funds from the Coffin Fine Arts

Trust and Edmundson Art Foundation, Inc.,

Nathan Emory Coffin Collection of the

Des Moines Art Center, 2016.20

IMAGE PAGE 10

Sandro Chia (Italian, born 1946)

Sator Arepo, 2014

Mixed media on paper

Frame: 15 3/8 × 11 3/8 inches

Image (visible): 10 3/4 × 6 7/8 inches

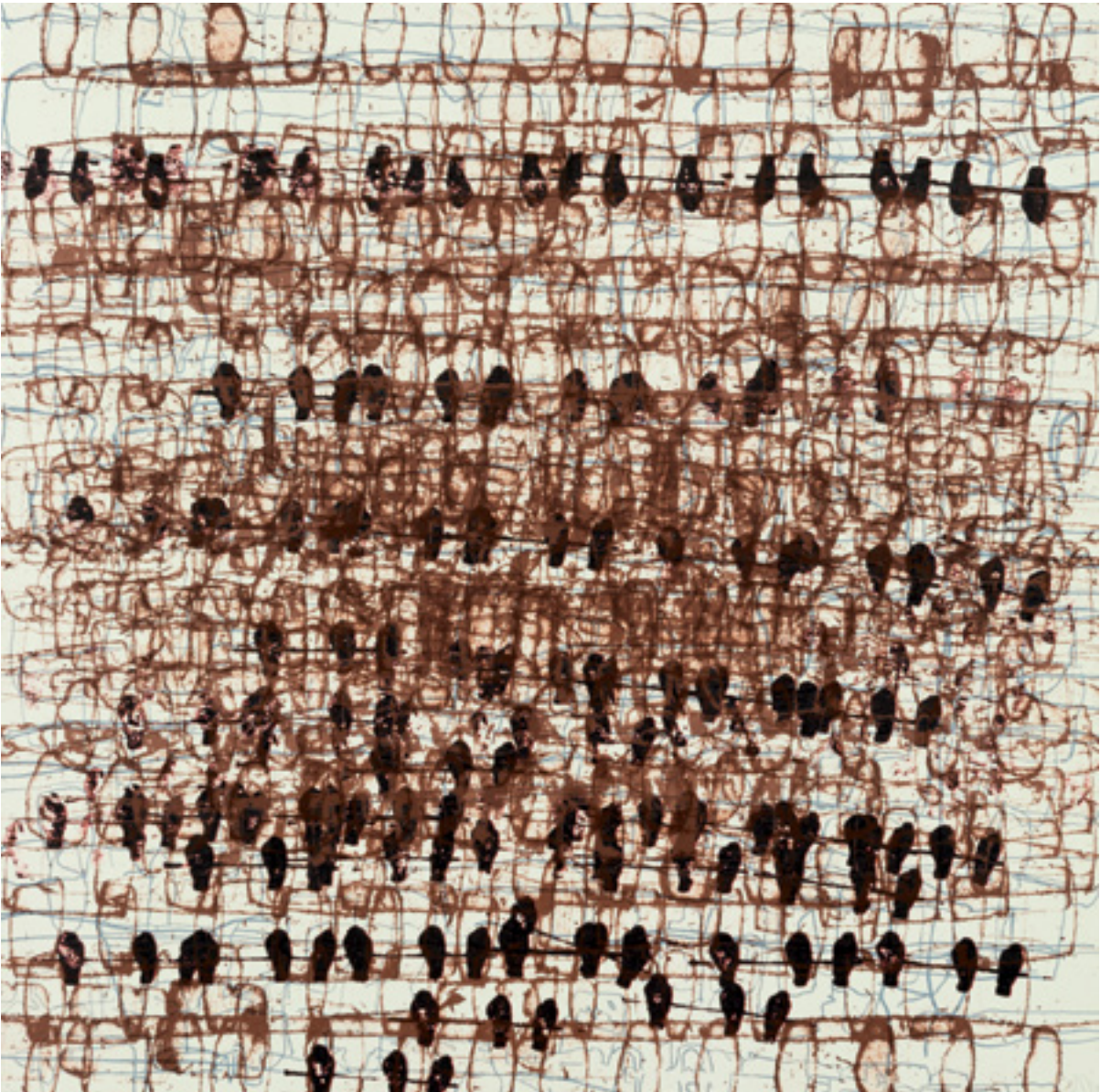
Des Moines Art Center Permanent Collections;

Purchased by friends of Amy Worthen in

honor of her retirement, 2016.21



3



2

An impressive selection of artworks and large gifts of photographs accessioned in 2016 enrich the variety and deepen the collections.

5 Alice Aycock (American, born 1946)
From The Series Entitled "The Miraculating Machine: Mock Suns and Halos 'Round the Moon'" (1981), 1992
Screenprint on paper
Sheet: 39 3/8 × 27 1/2 inches
Des Moines Art Center Permanent Collections;
Gift of the Des Moines Art Center's Print Club, 2016.22

Danny Lyon (American, born 1942)
Racers, McHenry, Illinois, 1965, printed later
Silver gelatin print
Sheet: 14 × 11 inches
Image: 13 1/8 × 8 3/4 inches
Des Moines Art Center Permanent Collections;
Gift of Jeff Perry in honor of Myron and Jacqueline Blank, 2016.49

Garry Winogrand (American, 1928–1984)
Centennial Ball, Metropolitan Museum, New York 1969, from "Women are Beautiful,"
c. 1970
Gelatin silver print
Sheet: 11 × 14 inches
Image: 8 13/16 × 13 1/8 inches
Des Moines Art Center Permanent Collections;
Gift of Jeff Perry in honor of Myron and Jacqueline Blank, 2016.56

Henri Cartier Bresson
(French, 1908–2004)
Burma, 1948
Vintage ferrotyped gelatin silver print
Sheet (image): 9 3/4 × 6 3/4 inches
Des Moines Art Center Permanent Collections;
Gift of Jeff Perry in honor of Myron and Jacqueline Blank, 2016.57

Glenn Brown (British, born 1966)
The Artist's Father, 2016
Etching on paper
Sheet: 10 1/4 × 8 1/4 inches
Image: 6 × 4 1/2 inches
Des Moines Art Center Permanent Collections; Gift of the Des Moines Art Center Print Club, 2016.75



6 Grant Wood (American, 1891–1942)
Sketch No. 3, Birthplace of Herbert Hoover, 1931
Graphite on paper
Sheet (image): 13 1/4 × 10 7/8 inches
Des Moines Art Center Permanent Collections; Gift of Ambassador Charles and Jennifer Larson, 2016.77

7 Peter Sekaer
(American, born Denmark, 1901–1950)
Youngstown, Ohio, c. 1937
Vintage gelatin silver print
Sheet (image): 4 5/8 × 6 11/16 inches
Des Moines Art Center Permanent Collections; Gift of Joel Meyerowitz, 2016.205



5



6



7

TOURS

21,006 people
were served by the tour program
in 2016.

14,751 visitors participated
in docent-led tours.

6,255 visitors participated
in tours of the John and Mary
Pappajohn Sculpture Park.

Notable tour statistics:

- 571 groups booked tours; 494 opted for guided tours; 77 chose self-guided visits. Approximately 56% of groups visited from within Polk County and 76% from within the state.
- 85 infants, toddlers, and adults took part in Baby + Me tours.
- 446 people joined Drop-In tours at the Art Center and Pappajohn Sculpture Park.
- More than 5,700 fourth-grade students from Des Moines, Indianola, Newton, Prairie City-Monroe, Saydel, Southeast Polk, Urbandale, Waukee, and West Des Moines Public School Districts were among the thousands of people participating in guided tours. The Art Center covers transportation expenses for these school districts.

New tour experience for people living with dementia and their caregivers.

Statistics show that one in nine people age 65 and older live with a form of dementia. Inspired to serve this community, as well as in response to a personal appeal, the Art Center piloted three programs for people with Alzheimer's and their caregivers serving 27 guests in 2016. These specialized experiences are designed to stimulate multiple senses, group dialogue, and elicit memory in response to artwork.

LECTURES AND GALLERY TALKS

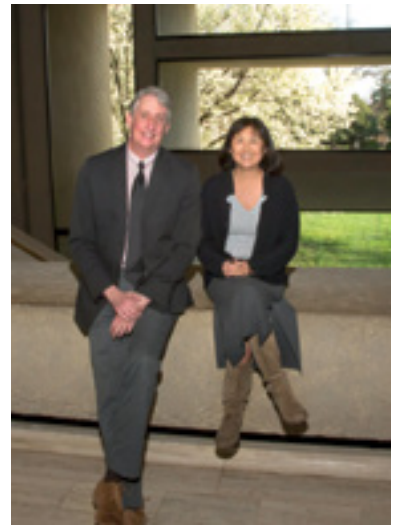
1,774 people attended
12 lectures

The keynote lecture of the year was presented by artist, architect, and 2016 Presidential Medal of Freedom recipient, Maya Lin. The 27th Fingerman Lecturer spoke about her practice which encompasses large-scale environmental installations, intimate studio artworks, architectural works, and memorials.

Artist Jim Campbell presented a public talk celebrating the completed installation of his urban light sculpture *Swirl* for the newly reconfigured Cowles Commons in downtown Des Moines.

In unexpected fashion, the Art Center featured a Lewis Carroll scholar who spoke in conjunction with the first major exhibition of the year, *Arts & Letters*. The exhibition included Salvador Dali's illustrations for "Alice in Wonderland," and Stephanie Lovett, president of the Lewis Carroll Society of North America, spoke about storytelling through words and images in Lewis Carroll. She hooked the audience immediately by re-posing Alice's question: "What is the use of a book, without words, pictures, or conversations?"

Artist Glenn Brown conversed with Jeff Fleming in tandem with the opening of Brown's first solo American exhibition, and a month later James Clifton, curator of Renaissance and Baroque painting at the Museum of Fine Arts, Houston, gave a tremendously insightful talk



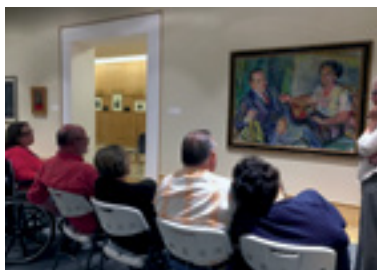
Director Jeff Fleming with 2016 Fingerman Lecturer, artist Maya Lin. Photo: Eric Salmon

about Brown's use of reproductions of Old Master paintings with single-figure compositions.

Vivian Maier researcher Ann Marks spoke in conjunction with the Art Center's presentation of *Vivian Maier: Through a Critical Lens*. Her lecture traversed what is known about Maier's life story. (Maier passed away in 2009 before becoming known to the art world in 2010). The second lecture sought to question the common labeling of Vivian Maier as a "street photographer." Binghamton University Professor John Tagg chronicled 150 years' worth of photographic history and engaged audiences in rapt attention about the role photography has, and will play, in our lives.

The Art Center hosted two lectures in support of print exhibitions: Suzanne Boorsch, curator of prints and drawings at Yale University spoke about Helen Frankenthaler and her contemporaries, and Amy N. Worthen, Curator of Prints and Drawings, gave a deeply personal and heartfelt presentation celebrating her final exhibition before retirement, *When the Dog Bites, When the Bee Stings*, a show which encapsulated a "few of [her] favorite things."

Additional lectures featured Ossian Ward, Head of Content at Lisson Gallery, London; Eve Moros Ortega, Executive Producer with Art21, and artist Orr Menirom, Toni and Tim Urban International Artist-in-Residence.



Docent Mary Doidge facilitates a conversation with Alzheimer's patients and their caregivers about Oscar Kokoschka's *Portrait of Mr. and Mrs. John Cowles*, 1949.



Orr Menirom delivering a public lecture in Levitt Auditorium. Photo: Eric Salmon

TONI AND TIM URBAN INTERNATIONAL ARTIST-IN-RESIDENCE

Orr Menirom (b. Tel Aviv, Israel) served as the inaugural Toni and Tim Urban International Artist-in-Residence. Funding for this residency was established in 2015 with the aim of bringing artists from foreign countries, particularly of Jewish heritage, to the Des Moines Art Center and the communities we serve.

The residency included an exhibition of four films in the museum. Additionally, Menirom delivered a public lecture and led a week-long workshop for teens entitled “Beg, Borrow, or Steal: Appropriation in Video Art.” The goal of the workshop was to understand, analyze, and practice the use of borrowed footage in video art. The participant’s films were displayed in the Adrienne and Charles Herbert Galleries March 14–18.

73 people participated in the Docent Program.

The Art Center’s touring philosophy is to facilitate meaningful experiences for visitors through dialogue with art, architecture, and each other to promote creative, critical, and empathetic thinking through visual literacy. The annual appreciation dinner held in June celebrated the year’s touring achievements: **4,500** hours of volunteerism, 16 candidate docent graduations, 14 five-year anniversaries, and Sherry Bergerson’s 15-year milestone as a docent.

Nearly **2,200** callers listened to audio tours of the Pappajohn Sculpture Park, while 239 people listened to content about the Art Center’s permanent collections.

3,018 people attended 22 film screenings.

476 people practiced yoga at the Art Center in 2016 with instructor Ben Spellman.

After each yoga session, Director of Education Jill Featherstone led a brief activity or conversation in the museum to help people make personal connections between their life, passions, and art. Two hundred of the 476 participants joined in these forays in the museum.

537 people participated in 17 gallery dialogues and experiences throughout the year.

Art Center curatorial staff Laura Burkhalter, Megan Cohen, Alison Ferris, Amy N. Worthen, and Director Jeff Fleming engaged visitors in their respective exhibitions.

A unique programmatic element of *Arts & Letters* was in-gallery readings in three genres: classic literature, monologues and dialogues from Shakespeare, and children’s literature. These events brought in 90 visitors and hundreds more watched on social media. The most highly attended gallery dialogue was artist Jordan Weber’s talk to 120 people about his exhibition *Body Snatchers*, an Iowa Artists exhibition.

COMMUNITY PHOTOGRAPHY SHOWCASE

In conjunction with the exhibition *Vivian Maier: Through a Critical Lens*, the Art Center invited the community to participate in a photography showcase. The response was impressive and inspiring, with 181 artists located in 12 states and two countries (United States and Denmark) submitting **327** images. All photographs were displayed online and 67 works were selected for a community showcase in the Adrienne and Charles Herbert Galleries of the Art Center’s education wing.

More than **250** people attended a Community Photography Showcase celebration in December, during which Michael Graham’s photograph *Better Half* was voted the people’s choice winner.



Community Photography Showcase people’s choice winner, *Better Half*, by Michael Graham.



Students showed excitement for the creative movement component of Creativity Days.

Nearly 700 elementary students from Perry and Johnston Public School Districts engaged in Creativity Days experiencing field trip opportunities for second-through fourth-grade students.

Participants rotated through docent-led tours of the museum, moved their bodies in creative ways with a professional performing artist in Levitt Auditorium, and created collaborative music-inspired art projects in the studio.

70 Des Moines area high school students toured the Art Center with digital SLR cameras and were inspired by Vivian Maier: Through a Critical Lens.

Students documented their experience through snapping pictures while exploring the museum, and then learned editing techniques in the Gail and Stanley Richards Studio. With the goal of creating a narrative of their perspectives of the Art Center, students formed stories and uploaded images to their own social media sites.

RIGHT
Vicky Vin captures a self-portrait in the style of Vivian Maier in the elevator located in the Richard Meier building.

ART SPECTRUMS

Art Spectrums, a free program for children with autism ages 5 – 10 and their family members to explore and make art together, served 228 people in 2016.

This ongoing program aims to use art as a catalyst to empower children to explore art through a variety of materials. Introduced are new sensory experiences that aid in the development of cognition, communication and motor skills, and increased self-esteem. Participants visit and discuss a work of art in the museum for inspiration and make their own artwork in the studio.



Kowen and Mindy show their Anselm Reyle inspired collage.

437 student works were displayed in the Student Art Exhibition at the Des Moines Arts Festival. This program highlights artwork of children in kindergarten through 12th-grade who attend schools in central Iowa. In addition to the exhibition, students are recognized in a ceremony and their work is displayed at the Des Moines Central Library. The Art Center presents year-long household memberships to participating students and teachers.

RESPONSIVE PROGRAMMING

Educational events reached more than 750 additional people through numerous off-site speaking engagements delivered by docents, staff, and Art Center-hosted guest speakers, as well as customized on-site experiences such as staff interviews, career talks, tours, and hands-on activities.



Studio class enrollment reached 2,937 children and adults in the community and continues to expand its offerings of classes, workshops, and day camps.



15,056 children and adults attended **409 classes, workshops, and day camps** over the course of three trimesters.

163 children and adults from the community were enabled to take classes thanks to the **Art Center's vital scholarship funds**. The scholarship program enriched the lives of students at more than 75 elementary, middle and high schools, and colleges in the Des Moines metropolitan area.

289 people participated in **Art Sampler**, a free community event for families to participate in art activities and view demonstrations, meet instructors, and learn about the educational offerings at the Art Center.

9 exhibitions featuring youth, adult, and faculty artwork made in Art Center classes were installed in the Adrienne and Charles Herbert Galleries throughout 2016; the accompanying receptions drew 1,091 people.

400 people attended **West Des Moines Community Schools' Impact of Art**. This guest exhibition celebrates the visual arts accomplishments of students from all 14 schools and recognizes scholarship recipients from their district.



Throughout the year, the Art Center collaborated with Blank Park Zoo, Des Moines Community Playhouse, Science Center of Iowa, and Des Moines Symphony Academy.

2,710 children and adults attended customized education classes at the Art Center and in the community, while 53 seventh-grade and 47 eighth-grade students from St. Augustin Catholic School visited the Art Center weekly to participate in art classes for school credit.

97 preschool students from five early education centers participated in museum-inspired art activities in their classroom. This program was developed to introduce the museum to young learners while participating in art activities designed to aid in the development of fine and gross motor skills.

41 young learners participated in a partnership program with **Des Moines Public Libraries during the Week of the Young Child**. Forty-one students participated in the Teen Academy, a merit-based scholarship program designed for college-bound teens that excel in the visual arts. The program consists of a nine-month curriculum that introduces students to a variety of art media, promotes collaboration and dialogue, and assists with the development of college portfolios.

9 teens from the community participated in **Sonic Fiction with Iowa Artist Alex Braidwood**. Sonic Fiction was a five-day workshop that introduced teens to the concept of combining sound, art, and technology through the creation of a sculpture. Working with Braidwood, each student recorded and created a composition from found sound, sketched their inspiration, and created a multidisciplinary kinetic sculpture. Additional custom education classes were offered to Central Academy, Goodrell Middle School, Hillside Elementary School, Principal Financial Group, and various Johnston elementary schools.

OUTREACH

The Outreach Program expanded its use of art education as a tool to help people in underserved communities acknowledge their unique identities and use artistic expression to overcome adversity and establish a sense of positive self-worth.

Attendance of 3,603
in the Outreach Program in 2016
demonstrated continued growth for this important Art Center endeavor.

The community outreach program's growth was marked by the development of four new community partnerships and programs. Six tracks of programming provide a framework for the Art Center's outreach curricula.

ART AND LITERACY

The Art Center offered six Art and Literacy programs that are designed to encourage reading and literacy to school-age children through the use of art and creativity. These programs engage participants in art activities related to age appropriate children's books, core curriculum subjects, and critical thinking and reading skills.

Art and Literacy partners:

- Children and Family Urban Movement served 40 youth with attendance totaling 117
- Pace Juvenile Center served 69 students with attendance totaling 318
- Martin Luther King Neighborhood Summer Camp served 50 youth with attendance totaling 126
- Oakridge Neighborhood Services served 200 youth with attendance totaling 480
- Ethnic Minorities of Burma Advocacy and Resource Center served 45 youth with attendance totaling 162



Youth from the Backyard Boyz learning about Andy Warhol and screen printing with Studio Education Assistant and Docent Mia Farrell.

GENDER SPECIFIC

These programs provide art classes that encourage creativity and healing to youth struggling with gender and identity challenges. Students worked on art projects specifically designed to give participants the momentum to immerse themselves in the creative process, promote self-expression, build confidence, and create a safe space to discuss issues and work with other students facing the same issues.

Gender Specific partners:

- Des Moines Public Schools' Des Moines Alternative Girls Program served 20 students with attendance totaling 134
- Pace Juvenile Center: Girl's Group served six teens with attendance totaling 71

DIVERSE COMMUNITIES

The Art Center served five organizations through the Diverse Communities Program. This program offers culturally diverse communities the opportunity to experience the museum through tours and provides art education to communities that may not otherwise have access. The art activities are designed to celebrate cultural exchange, understanding, and one's heritage. Art is used as a tool to overcome language barriers, educational obstacles, and socioeconomic barriers. The program worked to make the museum a welcoming place for diverse communities.

Diverse Communities partners:

- Connigo Early Education Center served 50 students
- Lutheran Services of Iowa's Refugee Connection Center's Elderly Program served 40 individuals with attendance totaling 246
- Harding Middle School Latino Student Group served 18 students
- Ethnic Minorities of Burma Advocacy and Resource Center served 11 people
- Monsoon / United Asian Women of Iowa served 16 teens

SCHOOL ENRICHMENT

225 students from all 11 Des Moines Public Middle Schools were served by the School Enrichment Program as participants in the Art Center's After School Artist Program.

This program is designed to engage students with art activities that provide a positive and safe "no-fail" environment. Students learn a variety of art techniques that encourage technical skill building and creativity. The classes provide students the opportunity to build confidence. Each school is offered a 4–6-week class that includes a visit to the museum. Attendance for this program totaled 663.

Additional School Enrichment partner:

- West Des Moines Community Schools after school art classes served 45 students with attendance totaling 110



Instructor Ethan Leners reads to students from Ethnic Minorities of Burma Advocacy and Resource Center in the Art and Literacy Program.

CONFIDENCE AND STRENGTH BUILDING

These programs provide people in adverse situations the opportunity to establish a sense of self-worth through creativity. The classes and projects are individualized to the students' needs to promote self-confidence, provide coping skills, and the opportunity to succeed. The students are encouraged to establish a positive relationship with the educator and their peers in a safe environment where they can explore self-expression through a variety of art media.

Confidence and Strength Building partners:

- Achieving Maximum Potential served 45 youth and young adults
- Children & Families of Iowa: District Wide Classroom served eight students with attendance totaling 104
- FOCUS High School served 55 students with attendance totaling 177
- Link Associates served 12 individuals with attendance totaling 131
- Orchard Place: Residential Facility served 60 youth with attendance totaling 148
- Voices to be Heard served 10 students with attendance totaling 146
- Youth Emergency Services and Shelter served 177 youth

MENTOR PROGRAM

Mentor programs are designed to encourage a healthy relationship between youth and a positive adult role model. Experiences feature a guided tour of the museum and an art activity inspired by the collection.

Mentor Program partners:

- Big Brothers and Big Sisters of Central Iowa served 37 youth and mentors.
- Community Youth Concepts served 38 youth and mentors.



Outreach Manager Rachael Jackson working with youth from Hip Hope.

The Art Center continues to engage and delight a growing audience in new and entirely unexpected ways.

ENTIRELY UNEXPECTED EVENTS

MUSIC OF DOWNTON ABBEY

In January, to tie in with the public fervor that surrounded the final season of *Downton Abbey* on PBS, National Public Radio syndicated host and lecturer Michael Lasser spoke about the songs from the wildly popular TV series.

Joining Lasser were Max and Katie Wellman singing songs that were popular during the time period depicted in the series. In between songs, Mr. Lasser presented fascinating facts regarding the creation of the songs and their historical context. Working with Iowa Public Television, a reception was held in the lobby of the Art Center. A complimentary English themed reception was provided for more than 100 guests after the performance, with beautiful linens, sterling silver, and all things English.

WINTERREISE

In conjunction with Des Moines Metro Opera, a three day staging of *Winterreise* (*Winter Journey*) was held in January in the lower level of the I. M. Pei building. *Winterreise* is a song cycle for voice and piano by Franz Schubert based on 24 poems by Wilhelm Müller. It is the second of Schubert's two great song cycles on Müller's poems. All three performances were at capacity. It was a stunning production, utilizing the view outside the large glass windows of Pei as the setting.



KNITTING CIRCLE

Due to the popularity of 2015's tapestry project (with more than 400 participants), the public was invited to bring their own materials and knit together in the Art Center lobby during select Sundays throughout the winter.

ARTS & ENDS

After two years of collecting furniture, china, crystal, silver, clothing, purses, books, rugs, artwork, jewelry, and much, much more, Arts & Ends was held the last weekend of April. Kum & Go graciously arranged for the Art Center to utilize the former Crescent Chevrolet building (which they now own) for 24 months to store and sell an enormous quantity of merchandise. A dedicated committee co-chaired by Art Center patrons Toni Urban and Dale Jansen polished silver, ironed linens, went to peoples' homes to wrap and pack heirloom china and crystal,

A very dedicated and hard working committee co-chaired by Art Center patrons Toni Urban and Dale Jansen spent months of countless hours preparing for this enormously successful event.

moved furniture out of homes, created stunning displays, washed and scrubbed the showroom's windows and floors, and for months spent countless hours on their feet keeping the showroom open to allow the public to drop off items. A cadre of volunteers worked tirelessly for the three-day sale, not only checking out merchandise but also taking items to customers' vehicles. Nearly \$125,000 was raised thanks to the herculean efforts of the committee, staff, and volunteers. This event would not have happened without the generosity of all those who donated items, and those who purchased them.



SUMMER ON THE HILL

The courtyard of the Art Center was packed with music fans for First Friday celebrations in June, July, and August. Guests enjoyed the music of The Soul Searchers, The John Krantz Jazz Quartet, and Gabriel Espinoza and Ashanti. Free Flicks attracted hundreds of movie goers to the front lawn for screenings of the endearing *The Princess Bride* and Hitchcock classic *To Catch a Thief*.

GALA CELEBRATION: *built*

The 2016 Art Center Gala was held on Saturday, September 17, in the newly renovated and highly acclaimed American Enterprise Insurance Company building in downtown Des Moines. Celebrating the incredible architecture of our city, the Art Center was thrilled to hold the gala in this landmark building. Former American Enterprise president Watson Powell, Jr. was an avid art collector, filling the building with works from the premier artists of the time, including Alexander Calder and Andy Warhol. The art and the building were featured in *Life* magazine in the late 1960s.

Co-chaired by local architects Tim Hickman and Mike Simonson, the evening included fine cuisine by The Tangerine Food Company and

live music by Faculty Lounge, Des Moines' premier ten-piece, horn-driven, jazz, funk, and R & B band.

As part of the celebration of architecture in the community, the Art Center hosted architecture tours around the city the week of the gala, visiting the Equitable Building, the Hub Spot, Integer Group (the Butler Mansion), Scott Chapel (designed by Eliel Saarinen), the corporate headquarters of U.S. Bank, and a private residence. These tours demonstrated the variety of architectural excellence in Des Moines.

Nearly 300 guests attended the Des Moines Art Center's 2016 Gala: *built, A Celebration of Architecture* | Des Moines Art Center + Community in the iconic American Enterprise Group Building.



AUDIENCE ENGAGEMENT

DAY OF THE DEAD

The Art Center celebrated the 16th annual Day of the Dead/*Día de los Muertos* celebration in late autumn. The celebration honored the lives of Mario and Simone Soria, whose paths crossed in America after living on two different continents. Mario Soria, born in La Paz, Bolivia, came to the United States to study and later became the chairperson of the Foreign Language Department at Drake University in Des Moines, where he also taught Hispanic literature, theatre, and civilization. He retired as Professor Emeritus of Spanish. Simone Soria was born in Czechoslovakia and eventually moved to Belgium as a child. She was one of approximately 7,000 Jewish children in Belgium who were saved from deportation during the Holocaust in World War II. In Des Moines she taught English as a Second Language at Hoover High School. More than 1,400 people attended the event, which featured a film about the couple, an altar beautifully decorated by the Soria family, and mariachi music.

HOLIDAY PROGRAM

Back by popular demand, music historian Michael Lasser joined the Heartland Youth Chorus in December to present an evening of interesting historical facts and some of the best loved holiday songs of the season. Founded by Barbara Sletto in 2003, the Heartland Youth Chorus is a performance-based program for youth, emphasizing musical literacy and character development. The group performed numerous songs including *Silver Bells*; *I've Got My Love To Keep Me Warm*; *Baby, It's Cold Outside*; and other seasonal favorites.

EXHIBITION OPENINGS

Exhibition openings highlighted the work of artist Glenn Brown, the late Vivian Maier, Iowa Artists Alex Braidwood and Jordan Weber, and a host of artists in the exhibition *Arts & Letters*. These celebrations were well received, attracting an average of 250 guests per event.

FACILITY RENTALS

The Art Center continued to attract local companies to rent the museum for meetings, parties, and corporate events, including DuPont Pioneer, Faegre Baker Daniels LLP, Greater Des Moines Partnership, Hubbell Realty, and Kum & Go. Numerous couples chose the Art Center for their wedding receptions as well. Thirty-six rentals were held at the Art Center in 2016.

MUSEUM SHOP

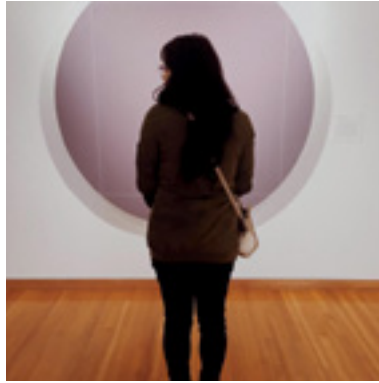
In 2016, the Museum Shop hosted several annual events, engaging the community and continuing to be a shopping destination for the Des Moines metro. Spring Fling, Holiday in July, and Members Double Discount events brought continued success. In the fall, the shop teamed up with social media to host its second annual fall photo shoot featuring apparel, jewelry, and handbags. Gift Wrap 101 in November featured a gift wrap tutorial along with the shop's complimentary gift wrapping service. Come Out and Play in December invited visitors and their children to actively engage with the shop's artful collection of toys in anticipation of the holidays. A new event, Holiday Artist Trunk Show, featured five local artists displaying and selling their art in the lobby of the Art Center. This event was successful in engaging segments of the community that may not have otherwise visited the museum.

Members Mary and Jon Doidge study Glenn Brown's stunning painting during the exhibition opening.





Elena Hicks by Ben Easter



Cincy Jauregui



Rachel Ewell



Rachelle Rowe



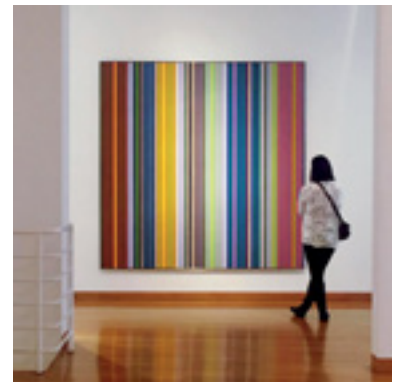
Art Center staff



Berenice Villaba-Martinez



Art Center staff



Art Center staff

SOCIAL MEDIA HIGHLIGHTS

Throughout 2016, the Art Center continued to engage with audiences via social media channels. Its Facebook audience continued to grow and increased past 22,000 page “likes.” Through a continued use of Twitter, Art Center followers gained behind-the-scenes looks at events happening around the museum in real-time. The Art Center experimented with live video on both Twitter and Facebook to highlight gallery happenings during *Arts & Letters*, performances during the exhibition opening of *Iowa Artists 2016*, and more. The Art Center’s Instagram following remained one of its fastest growing: with nearly 10,000 followers, the account provides an entirely unexpected perspective on the Art Center’s programming, classes, and exhibitions.

The Art Center now has more than 10,000 Instagram followers who regularly submit their unique views of the Art Center and the Pappajohn Sculpture Park.

Awards & Acknowledgements

In August, the Art Center won first place at the Social Media Club Des Moines’ annual Hashie Awards in the category of Facebook: Best Nonprofit.

While the Art Center regularly shares information about upcoming exhibitions and community events on its social media account, staff also participated in, and hosted a number of community focused campaigns.

Museum Instagram Swap

The Art Center participated in Des Moines’ first Museum Instagram Swap in 2016. Hosted by the Science Center of Iowa, the social media campaign enabled area organizations to share a look at a peer organization with their followers. The Art Center partnered with the Science Center of Iowa and shared a series of posts exploring the museum from an art-focused perspective.

MEMBERSHIP

3,196 members enjoyed a multitude of ways to interact with the museum through member groups, trips, exhibition openings, and special events.

MEMBERSHIP

- From 2015 to 2016 Des Moines Art Center membership increased by more than 3%.
- Nearly 3,200 members found themselves #ArtCentered in 2016.
- Members participated in member-only programs and events like Ask a Curator and Art for Lunch, and enjoyed a rare opportunity to peek inside the vault with Chief Registrar Mickey Ryan. Members enjoyed an art appreciation class and bus tour of the installations of exhibiting Iowa Artist Alex Braidwood, and participated in many themed tours of the collections.
- Member groups volunteered more than 800 hours of time to plan entirely unexpected programs.



ART NOIR

2016 was a record year for Art Noir as the affiliate group topped 600 members. Members celebrated ten years of making a positive impact in the arts community with X, a film noir themed evening of dark mystery and vintage glamour. The group also enjoyed an after hours flashlight tour, gallery talks with cocktail tastings, and partnered with groups like YPC Des Moines and Salisbury House Young Professionals to make contemporary art accessible to the next generation of art lovers.



UPPER Art Noir celebrated its 10th anniversary with a film noir themed evening.
LOWER Salon 4700 members at a Convo With Creators event

SALON 4700

2016 was a stellar year for Salon 4700. Members curious and enthusiastic about art at the Art Center and in the Greater Des Moines community experienced in-depth engagement with the art and artists of our time. Members began the season learning about the business of art at Moberg Gallery, followed by a special cocktail hour with *Arts & Letters* Curator Laura Burkhalter and Timothy Shipe, curator of the International Dada Archive at the University of Iowa. Later, the group was given a private collection tour at the home of member Dale Jansen.

During the summer, Salon 4700 members held their second installment of *A Conversation with Creators* at Crane Artist Lofts in downtown Des Moines. The group ended 2016 on a high note with a tour of the World Food Prize led by Ambassador Kenneth M. Quinn and a private celebration at Goldfinch restaurant. They ended a second full year with more than 100 active members.

PRINT CLUB

Print Club members experienced informative and engaging programming, including a reception with exhibiting artist and 2016 Commissioned Print artist Laurel Nakadate, and a trip to Omaha. In Omaha, members learned about the history of engraving and old work craftsmanship at Tourek Engraving, and explored the studios and exhibitions at Bemis Center for Contemporary Arts. Print Club also continued to give back to the Art Center through an annual gift print, Alice Aycock's work *From The Series* Entitled "The *Miraculating Machine: Mock Suns and Halos 'Round the Moon,'*" and the conservation of Thomas Shotter Boys' *Westminster Abbey, Hospital*, from "Original Views of London As It Is." They capped off 2016 with nearly 200 members.



Members found many ways to interact with exhibitions and learn from curators during gallery talks and conversations.

CONTEMPORARY COLLECTORS

In June, a moveable feast was held at the handsome Park Fleur Condominiums for Art Center Contemporary Collectors with hosts Johnnie and Bill Friedman, Linda and Tom Koehn, and Jeanne and Richard Levitt opening their stunning homes for cocktails, dinner, and dessert as well as viewing their equally stunning art collections.

In August, Contemporary Collectors traveled to Lincoln and Omaha, Nebraska for a weekend packed with memorable art experiences. The trip started with a visit to the world-class private art collection of Karen and Robert Duncan who have spent decades collecting contemporary art, amassing nearly 2,000 works. The Duncans graciously hosted lunch in their beautiful home and escorted the group on a tour of their grounds, which were studded with sculpture created by world-renowned artists.

In Lincoln, the group visited the Sheldon Museum at the University of Nebraska and participated in a guided tour. Traveling to Omaha, they spent the night at Hotel Magnolia, a prestige boutique hotel located in the heart of the Old Market area. Built in 1923, this former Aquila Court Building was named to the National Register of Historic Places in 1974. To end the day, the group enjoyed dinner at Le Bouillon where Chef Paul Kulik presented his take on comfort foods of rural France.

The last day of the trip, the group visited the Joslyn Art Museum where they participated in a docent-led tour of the Sheila Hicks exhibition *Material Voice*. This was one of the most significant recent exhibitions of Hicks' work, and featured large hanging installations, free standing sculptures, and elaborate weavings from throughout the artist's prolific career.

During a summer reception at Americana restaurant in Des Moines, the group met Roger Machin, director of field operations at Methods and Materials Inc. of Chicago. Machin shared his experiences installing a variety of works, including sculptures in the John and Mary Pappajohn Sculpture Park.

DIRECTOR'S DINNER

More than 90 guests attended the Director's Dinner at the office of James Cownie. This architecturally impressive corporate headquarters, located in Des Moines' East Village, offered a stunning view of downtown Des Moines and an impressive art collection. Guests enjoyed an evening of great food, wine, and conversation.

All membership and affiliate group dues directly support the Art Center's Free Admission Program and mission.

LOYAL GIVING

THANK YOU to the following donors who have made significant financial contributions to the Des Moines Art Center over the past 27 years. Gifts were contributed to Art Center campaigns, the free admission program, annual operating support, conservation, art acquisition, programs, and more.

\$1,000,000+

Mr. Myron and Mrs. Jacqueline N. Blank
Bravo Greater Des Moines
Melva Bucksbaum and Raymond Learsy
Gardner & Florence Call Cowles Foundation
DuPont Pioneer
Ellen and Jim Hubbell
James W. and Helen Hubbell
David and Elizabeth Kruidenier
Maddie Levitt
Jeanne and Richard Levitt
Anna K. Meredith Endowment Trust
John and Mary Pappajohn
Principal Financial Group
Wallace Foundation
Wells Fargo

\$500,000 – 999,999

Pamela Bass-Bookey and Harry Bookey
John Brady Foundation
Margaret Brennan
City of Des Moines
Community Foundation of Greater Des Moines
W. T. and Edna M. Dahl Trust
Charles and Karin Edwards
Herbert Lewis Kruse Blunck
Architecture
Harriet Hubbell
Iowa Arts Council
Mary K. and Daniel M. Kelly
Kyle J. and Sharon Krause
The Kresge Foundation
Elizabeth S. Kruidenier
J. Locke and Harriet S. Macomber
The Fred Maytag Family Foundation
Meredith Corporation Foundation
National Endowment for the Arts
Polk County
Craig and Kimberly Shadur
Vision Iowa

\$225,000 – 499,999

Roberta Ahmanson
American Enterprise Group, Inc.
Aviva USA
Meier Bernstein Foundation
The Bright Foundation
Matthew and Carolyn Bucksbaum
Robert and Gloria Burnett
City of West Des Moines
Cowles Charitable Trust
Patty and Jim Cownie Charitable Fund
The Des Moines Register
Dr. Louis and Lois Fingerman
Greater Des Moines Partnership
Georgia H. and Robert Helmick
Institute of Museum and Library Services
John and Penny Krantz
Henry Luce Foundation
Ellen Maytag Madsen Estate
Mrs. Katherine Meredith
Mr. and Mrs. Edwin T. Meredith
The Mid-America Group
Nationwide
Northwest Area Foundation
Louise R. Noun
Marvin and Rose Lee Pomerantz
Prairie Meadows
Gail and Stanley Richards
Mary and Stanley Seidler
Mary and Tom Urban
Toni and Timothy Urban
Dennis and Diane Young

Gala co-chair Tim Hickman (second from right) celebrated the evening with friends in the stunning outdoor courtyard of the American Enterprise Building. Photo: Eric Salmon

2016 DONORS

2016 WAS A MEMORABLE YEAR FOR FUNDRAISING THANKS TO THE ART CENTER'S GENEROUS DONORS.

\$100,000+

21st Century Endowment
Bravo Greater Des Moines
James D. Edmundson Foundation
Ellen and Jim Hubbell
Harriett Hubbell
Anna K. Meredith Endowment Trust
John and Mary Pappajohn
The Wallace Foundation Endowment

\$50,000 – 99,999

Pamela Bass-Bookey and Harry Bookey
Gardner & Florence Call Cowles Foundation
Iowa Department of Cultural Affairs
The Fred Maytag Family Foundation

\$25,000 – 49,999

Jacqueline N. Blank Fund for Museum Education
Jacqueline and Myron Blank Exhibition Fund
The Bright Foundation
Iowa Arts Council, a Division of the
Iowa Department of Cultural Affairs
Mary K. and Daniel M. Kelly
John and Penny Krantz
Kyle J. and Sharon Krause
Jeanne and Richard Levitt
Maddie Levitt
Mid Meredith Zuendel Endowment Fund
Nationwide Foundation
The Principal Financial Group

\$15,000 – 24,999

Meier Bernstein Foundation
John Brady Foundation
Patty and Jim Cownie Charitable Fund
DuPont Pioneer
Ralph and Sylvia G. Green Charitable Foundation
J. Locke and Harriet S. Macomber
Sara and Steven Marquardt
National Endowment for the Arts
Prairie Meadows
Craig and Kimberly Shadur
The Trust of Keith W. Shaver

\$10,000 – 14,999

Gregory and Andrea Abel
Mary and Douglas Bruce
Melva Bucksbaum Family Foundation
The Cowles Charitable Trust
Dr. Louis and Lois Fingerman
The Hinson Family Foundation
Homesteaders Life Company
Darren R. Jirsa, D.D.S.
Linda and Tom Koehn
Meredith Corporation Foundation
Cynthia O'Brien and Mike Fitzpatrick
Pappajohn Sculpture Park Maintenance Fund
Anastasia Polydorou
Mary and Stanley Seidler
Michael Simonson
Substance Architecture
Wells Fargo
Dennis and Diane Young



\$5,000 – 9,999

Anonymous, in honor of the Board of Trustees
 Accordia Life & Annuity
 American Equity Investment Life Insurance Company
 ASK Studio
 Leslie Babich and Stacy Wanderscheid
 Bankers Trust
 BNIM Architects
 Margaret Brennan
 Woody and Victoria Brenton
 Sandra and C. Dean Carlson
 Joseph and LaNae Ceryanec
 Cognizant
 Community Foundation of Greater Des Moines
 Graham Cook and Catherine Bennett
 Lisa Daley
 Richard L. Deming, M.D.
 John and Eileen Eckert
 EMC Insurance Companies
 Faegre Baker Daniels LLP
 Lillian Goldman Charitable Trust
 Grinnell College
 Marty Gross
 GuideOne Insurance
 Randall H. Hamilton and Bruce Hughes
 William Randolph Hearst Foundation
 Charlotte and Fred Hubbell
 Hubbell Realty Company
 The Iles Family-Dunn's Funeral Home
 John Deere
 Nicolette and Dan Keough
 Michael and Kimberly Krantz
 Charitable Foundation
 Lisa Kruidenier
 Lauridsen Family Endowment
 Margaret and Warren May
 Patricia McFarland
 Michael H. and Gina K. Miller
 Judith Milligan
 Neumann Monson Architects
 Cleojean Olson
 Jill and Mark Oman
 Gail and Stanley Richards
 Debra and Douglas Roberts
 John Ruan Foundation Trust
 Patricia and Louis Schneider
 The Sharon A. Simmons Charitable Fund
 Gordon J. Smith
 Sally Titus
 Mary and Tom Urban
 VOYA Financial, Inc.
 Mary Ann and James Wallace
 Deborah and Douglas West
 Willis Auto Campus
 Workiva
 Alan Zuckert

\$2,500 – 4,999

Bank of America Foundation
 Belin McCormick, P.C.
 Cheryl and Bill Bergren
 Margo and Donald Blumenthal
 Sue Rutledge Brenton and J.C. (Buz) Brenton
 Robert Burnett
 Casey's General Stores, Inc.
 Jeff Chelesvig
 Johnny and Teresa Danos
 Douglas B. Dornier, M.D. and Carole Villeneuve
 Charles and Karin Edwards
 Farm Bureau Financial Services
 Marshall and Judith Flapan
 Carrie Marshburn-Fleming and Jeff Fleming
 Charles Gabus Ford
 Mr. and Mrs. William Friedman, Jr.

Barbara and Michael Gartner
 Mary Gottschalk and Kent Zimmerman
 The Graham Group, Inc.
 Jason and Athamandia Gross
 Holmes Murphy & Associates, Inc.
 Dr. J. William and Mrs. Mary Holtze
 Humanities Iowa
 Hy-Vee, Inc.
 Robert Josten
 Josh and Susie Kimelman Foundation
 KPMG LLP
 Diane and Keith Krell
 Nancy J. Main
 Drs. Robert and Andrea Margeas
 LaDonna and Richard Matthes
 Randy E. McMullin
 Gregg and Kathleen Narber
 Fred and Linda Nesbit
 Neumann Brothers, Inc.
 Muriel and Jim Pemble
 Henry G. and Norma A. Peterson
 Charitable Trust
 Martha and Jorgen Rasmussen
 Amanda and Michael Reynal
 John and Lisa Rhodes
 Sammons Financial Group
 Loretta and Robert Sieman
 Lisa Stange and Jon Davidson
 Robert and Jane Sturgeon
 Julie and Tom Swank
 Helen J. Urban Scholarship Fund
 Toni and Timothy Urban
 Toni and Tim Urban International
 Artist-in-Residence Fund
 US Bank
 Variety - the Children's Charity
 Susan and Carl Voss
 Kay Ward
 Willa Wenzl
 West Bank
 Connie Wimer and Frank Fogarty
 Donald C. Young
 Dr. Jefferianne and Dr. Eytan Young
 Kathy and Steven Zumbach

\$1,000 – 2,499

Art4Moore
 Margaret Ann (Dudie) Ash Fund
 Phillip and Robin Bear
 Julie M. Best
 Bryan and Betsy Boesen
 Carolyn Bucksbaum
 James Carney
 David and Theresa Chivers
 Kaye C. Condon
 Fred Darbonne
 A.E. Easter Family Foundation
 Katherine and Herbert Eckhouse
 Katherine Elsner and Steven Adelman
 Essex Meadows, Inc.
 Elaine G. Estes
 Mary Joan Farver
 James and Allison Fleming
 Jann Freed and John Fisher
 Arthur J. Gallagher Risk Management
 Services, Inc.
 Jo Ghrist
 John and Ann Ghrist
 Richard and Eileen Gloor
 Barbara Graham
 Charles and Janet Haas
 Joseph and Carrie Hall
 Stacey Henderson
 Nancy Hewitt

Tim Hickman and Frank Vaia
 Ann Hintz
 Paul Hlivko and Melinda Urlick
 Will and Dixie Hoekman
 William R. Hornaday, Jr.
 Trudy Holman Hurd
 Iowa State Bank
 Fritz James
 Joseph and Peggy Jester
 Charles S. and Jaina Johnson
 Lori and Sam Kalainov
 James and Mary Ellen Kimball
 Lawrence Kirsner
 Kum & Go
 Mike LaMair
 Myrt Levin and Tom Stephenson
 The Lint Companies
 Frederick and Joyce Lock
 Nancy and Randy McGuire
 Nicola Mendenhall and Wendell C. Speers
 Donald and Janet Metcalf
 Donald and Marcia Miller
 The Frank Miller Scholarship Fund,
 Drake University
 Maureen Mondora and Sean Sexton
 Katherine Murphy
 Michael E. Myszewski
 and Martha James
 R.W. and Mary Nelson
 R.W. and Mary Nelson Scholarship
 Endowment Fund
 Rick and Liz Neumann
 Alfredo Parrish and Margaret Stuart
 Peter and Patricia Pashler
 Melanie Porter
 Dr. Mary and Mr. Suku Radia
 RDG Planning and Design
 Cynthia and Jack Rehm
 Harlan and Audrey Rosenberg
 Kimberly and Eric Roush
 Mindy and Gary Scholten
 Jaey and Brenda Sedlacek
 Robert and Cherie Shreck
 Jill Smith
 Charles and Peggy Strief
 Ted and Kathy Stuart
 Joyce Van Pilsum
 F.W. and Emily Weitz
 The Wellmark Foundation Matching Gifts Program
 Robert L. and Ruth E. Wiese Trust
 James and Ann Willer
 Missy and Michael Wolnerman
 Krenio Wright

\$500 – 999

Inger H. Anderson
 James Austin and Crystal Helbing
 Susan Barnes and Jean Davis
 Bell-Pullen Arts & Culture Scholarship Fund
 Babette and C. Robert Brenton
 Jolene and Hans de Bruijn
 Robert and Marlene Buckley
 Claudia Cackler
 Frank Cecil
 Richard and Joyce Chapman
 Julie and Michael Coppola
 Jon Darsee
 DLL Finance LLC
 Andrew and Isabel Doria
 Timothy and Teresa Dunbar
 Elizabeth Eddy
 Catherine Elliot
 Rosalie Gallagher
 Gannett Match

2016 DONORS

David Goldman
Katherine and Andrew Hauser
Denise and Alan Holck
Michael and Debbie Hubbell
Beverly Hutney
Craig Ibsen
Lois and Dwight James
Steven Jayne and Karen Shaff
P.D. Jenison and Irving Wolfe
Jeff and Jane Johannesen
Thomasine and Stephan Johnson
Mary Josten
Margaret Junkhan
Mark Konrad and Sonia Parras
Larry Ladd
Alison and Steve Lang
Tracy Levine
Tom Lynner and Linda Godwin
Scott McDonald and Brad Snyder
Stanley and Esther Miller
Susan and Larry Moore
Pauline Kay Myers
Amy Jo and Thomas Myers
Dana Quick-Naig and Scott Naig
Gerard and Mary Lou Neugent
Andrew and Barbara Nish
Donald and Elizabeth Pink
Kent and Virginia Porter
Quik Trip
Cindy and Richard Raabe
Alvin and Sue Ravenscroft
Peter and Rita Reed
Michael and Ann Richards
Dianne Riley
Kent and Janice Rosenberg
Steven and Keely Rosenberg
David and Karen Safris
Claudia and Paul Schickler
William Stowe and Amy Beattie
Bokkyeong Suh and Cornel Fuerer
John R. Taylor
Theresa and Keith Touchton
Murphy Waggoner and Werner Kolln
Michael Wallace
Martin and Suzanne Walsh
Leigh Wichern

\$100 – 499

AAA
Erica Abell-Holland and Brent Holland
Vicki Adams
Liz and David Adelman
Clinton and Jacqueline Akerberg
C.J. and Sara Alexander
Kimberly Dunbar and Michael Alowitz
Gary and Mary Alice Amerman
Roger and Donita Anders
Bruce and Beverly Anderson
Laurine and James Anderson
Scott and Jennifer Anderson
Margaret Armstrong and Jon Chester
Stephen Arnold
King and Ann Au
Betty Augspurger
Sally Pederson and James A. Autry
Sarah and Dan Bacehowski
Kelli and Bruce Baker
Joshua Baker and Jessica Terrill
Stephen and Cathy Balderson
Jeff Baldus

Renae Bandstra and Dave Salaba
Hannah Banes
Nancy Barnett
Barton Solvents, Inc.
Jean Ann Basinger
Sally and Dennis Bates
Wayne and Delores Bauman
Mary Ann Beard
Becker Fine Stringed Instruments, L.C.
Mary Beh
Robert and Lois Beh
Vince and Roberta Bejarano
James and Jane Bell
Christine Bening
Sherry Bergerson
Kari and CJ Bienert
David and Beverly Blaha
Connie Blunck
Pat Boddy and Robert Davis
Carol and David Bodensteiner
Martha Boesenberg
Nancy Bone
Michael Bowser and Rich Eychaner
Quentin and Inez Boyken
Tony Braid and Mark Babcock
Donald and Patricia Brandt
Bill Brauch and Karen Massetti Miller
Bill and Pamela Braune
Larry and Elizabeth Bredeson
Jonathan Brendemuehl and Christopher Diebel
Scott and Elizabeth Brennan
Laurine and David Briden
Neil and Anne Broderick
Martin and Shelley Brody
Joan and Curt Broek
Claudia and Christopher Brown
Donald and Barbara Brown
Joanne Brown
Kelly and Chad Brown
Mikael Brown and Patricia Kell
Robert T. Brown
Susan and David Brown
Roger and Barbara Bruene
Sandra Bruggemann
John and Julie Bruntz
Phillip and Rebecca Bryant
Stewart and Mary Buck
Edward Buckingham
Cristina Bucksbaum and William Rogers
Kent and Barb Buckton
Diana L. Bunten
Chris and Zorica Burch
Susan and Jerry Burgess
Joan Burke
Max Burkey and Susan Ekstrom
Don Burkhead
Crystal and Robert Burns
Frederick and Mary Ellen Burr
Matthew and Betsy Busick
Eric A. Butler
Dottie and Bob Butts
Jay and Katie Byers
William and Diane Caldebeck
Lori Calhoun
Crom and Mary Campbell
Jan Campbell
Lyle and Glenda Carpenter
Phyllis Carpenter
Simon and Patricia Casady
Jody Caswell and Julie Ingersoll

Roger and Kimberly Ceillely
Joe and Pat Cerne
Heidi Cessford Peglow
Jim and Sandy Champion
Margaret Chaplinsky and Catherine Kalinoski
Hal and Avril Chase
Tom Chase and Daniel Palmer
John and Lori Chesser
Teresa and James Choi
Patricia Chong and Dennis Hanssen
Barbara Church
Ellen Cioccio
Bob and Mariann Clark
Mark Clark and Katie Roth
Rose and Summer Clark
Sarah Clark and John Thomas
Karen and William Claypool
Ryan Clutter and Vicki Sehgal
Tracy and Franklin Codel
Suzanne and Mathew Coen
Garth Coffman
Maurice and Patricia Cohen
Ric Collier and Aden Ross
Beth and Michael Colwell
Jean and LaMonte Combs
Brendan and Christine Comito
Joseph and Margaret Ann Comito
Larissa Connett and Gavin Moore
Ann Connors and Thomas Fesenmeyer
Corey and Colleen Conrad
Elizabeth and Timothy Coonan
Janice and Brian Cooney
Kevin and Mollie Cooney
Joe and Cyndy Coppola
Mary Core
Joy Corning
Brena Corona
Charles and Ellen Corwin
William and Marilyn Corwin
Jeffrey Couch
Christine and Drew Cownie
Mike Coyne and Peggy Russell
Jill Creveling
Crossfit FlyOver
Mary Curran and Doug Miller
Diane Cuttell
Guy and Nancy Danielson
Ann Davidson
Donna Davilla
Patricia Davis
Michael and Ronda Davis
Stanley and Marilyn Davis
Linda Dawe
William and Sheila Dawe
Arletta Dawson
Daniel and Marilyn Deavers
Lea Rosson DeLong
Mardi and Patrick Deluhery
Michelle Delury
James and Barbara Demetron
Jackson Den Herder and Cameron Barr
John DeVries
Mark and Carrie Devries
Donner and Jacquelyn Dewdney
Henry DeWild
Jane E. DeWitt
Jeneice Dickey
Randy Dillon
Lesley Wright and Donald Doe
Jon and Mary Doidge

Mark and Julia Doll
 Patricia Donhowe
 Jan Donnelly
 Heather and Chris Doocy
 Patricia and Doug Dornacker
 Philip Dorweiler
 Brett Douglas and Erin Olson-Douglas
 Robert and Pamela Douglas
 Kay Carpenter Doyle
 Shelby Doyle
 David Drake and M. Claire Cumbie-Drake
 Catherine Dreiss and Jeffrey Thompson
 Rick Dressler and Cindy O'Connell
 Stan Dudley and Sherry Levine
 Nancy and Art Dunbar
 Paula Duncan
 Jon Duvick and Carol Hendrick
 Selma Duvick
 William Dyche
 Stephanie and Samuel Early
 Cody and Ashley Edwards
 Beth Ann and John Edwards
 Cecilia and Wes Ehrecke
 David and Jocelyn Ehrhardt
 Roy and Averyle Ehre
 Kristi and James Eiler
 Elements, Ltd.
 Sarah Elliott and Timothy Carroll
 Beverly Ellis
 Sally Davis Ellwein and Todd Ellwein
 Michelle Elnick
 Bennett and Leisa Ely
 Linda Enerson
 Arnold and Karen Engman
 Stanley and Shari Engman
 Evalyn and Amerlon Enriquez
 Priscilla Eppinger
 James and Betty Erickson
 John Erpelding
 Ken and Louise Esveld
 J. Scott and Janet Evans
 Stephen Exel
 Charles and Marilyn Farr
 Charles M. and Marty Farr
 Deirdre Farr
 Jill and Jeff Featherstone
 Jessica and Robert Feeney
 Heather Fegan
 Alan and Julie Feirer
 Hannah Feller
 James and Jillene Ferguson
 Linda and Lynn Ferrell
 Alison Ferris and Peter Shellenberger
 Suzanne and Randall Fey
 Jonathan and Jill Fialkov
 Jim and Martha Fifield
 Robert and Diane Findlay
 John and Alejandra Fingert
 Sammy Flanagan and Kyle French
 Amanda and Jonathan Fletcher
 Andrew Flynn and Linda Shevlin
 Lydia Fonseca and R.E. Welch
 Oma and Bailey Ford
 Stephen and Ann Forney
 Ruth Foster
 Eugene Fracek and Mary Beth Schroeder Fracek
 Ric and Susan Frambach
 Carol and Gerry Frank
 Carleton Frederici and Susan Low
 Joe Freund and Nicholas Roth

Stephanie Frick and Paul Rowe
 Carole A. Frier
 Deidre Fudge and Barb Royal
 Eric Gaby and Kevin Hill
 J.G. and Corrine Ganske
 Nancy and Dan Gardner
 Rich and Rose Gardner
 Sarah Garner and Thomas Frolick
 Josh Garrett and Kevin Schnell
 Sarah Garst and Jeff O'Donnell
 Jennifer Garst and Steve Libbey
 Kate Garst
 Diane and Frank Gaulke
 John and Kate Gee
 Thomas and Katherine Geraty
 Michael and Ann Gersie
 Tatiana Giacinti
 Melanie Gibb
 Jean and D. Craig Gifford
 Harvey Giller and Barbara Hirsch-Giller
 E.J. Giovannetti
 Sandra and Walter Githens II
 Cheryl and Michael Giudicessi
 Maggie and Justin Glisan
 Larry and Patricia Goetz
 Dennis Goldford and Sharon Louis-Goldford
 Thomas and Cathy Goldman
 Nicholas Gonwa and Hillary Courtney
 Maghan Goodsell and Braydon McCarville
 Judith Goodwin
 Randy and Mary Gordon
 Marcene and Carl Grant, Jr.
 Grant Wood Chapter Questers
 Theresa Graziano
 Bonnie Green
 Mathew Greiner
 Linda and David Grieve
 Karl and Barbara Gwiasda
 Deb and Joel Hade
 Jon and Tina Hade
 Wael Haidar and Sarah McAvoy
 Janelle Hall
 Ron and Carol Hallenbeck
 Khanh and Neil Hamilton
 Randall and Kathryn Hamilton
 James and Terry Hammer
 Deborah and David Hansen
 Dawn and David Hanson
 David T. Hanson
 Ronald and Jennifer Hanson
 Sunya Hardi
 Henry and Muffy Harmon
 Rick and Mary Harper
 Brad Hartman and Tim Walz
 Christine Hartoft
 Scott Hartsook and Dennis Groenenboom
 H.D. Art Club
 Cora Curtis Hayes
 Annette and Casey Head
 Dan Heck and Michelle Herring
 Shane Hefty and Amy Hughes
 Diane and Michael Heid
 Douglas and Barbara Hein
 Steven Held and Susan Breen-Held
 John Hemminger
 Scott and Elizabeth Henderson
 Christine and Steve Hensley
 Victoria Herring and Mark McCormick
 Steven and Karen Herwig
 Shelly Hewitt

Richard and Diane Hickman
 Shawn Hicks
 Mark Hill and Amy Anderson
 Barbara Jo Hime and Greg Knoploh
 Christine and Terry Hines
 Harry and Starr Hinrichs
 Joe Hintzsche
 Michael and Julie Hipp
 Harlan and Dorothy Hockenberger
 Brent and Anna Hoffman
 Erin Hogan and Frank Roberts
 Gerald and Rosemary Holland
 Sharon and Bob Holz, Jr.
 James and Nicole Howard
 Elizabeth and Stephen Howell
 Jeffrey Hunter and Janet Griffin
 Marcia and Michael Hunter
 Bernard and Kay Huston
 IBM Corporation
 Iowa Heart Center
 Thomas Jackson and Joanne Stevens
 Marian Jacobs
 Ramin and Donya Jahromi
 Andrea Jensen and Matthew Steele
 Bart and Teresa Jensen
 Kerri and Dan Johannsen
 Lyn Isaacson and Mark Johnson
 Myrna Johnson
 Neil and Judith Johnson
 Paul and Marion Johnson
 Dianne and Roger Jones
 Mary Jones and Steven Rose
 David and Gerrienne Jordan
 Ric and Carol Jurgens
 Patricia and Donald Kaesser-Sweeney
 Travis Kain
 Marie-Louise and Mark Kane
 Gretchen R. Kauffman
 Sandra and Colin Kavanagh
 Craig and Nancy Kelinson
 Ryan Kelleher and Aiko Sakurai
 Bruce and Susan Kelley
 Brigid Kelly
 Daniel and Emy Kelly
 Elizabeth Kennedy
 Regina and Robert Kennedy
 A. John and Lisa Kenworthy
 James and Amy Kern
 Mason Kessinger and Emily Betts Susanin
 Khalid Khan and Iman Burns-Khan
 Karla Killinger and Scott Blacketer
 Loral and Robert Kirke
 Dick and Mary Kay Kirsner
 Andrea and Joseph Kline
 Ruth B. Klotz
 Bill and Susan Knapp
 Kathranne Knight and Matthew Cullen
 Carol Kochheiser
 Bill and Beth Koenig
 Sue Kolbe
 Sandra Koll
 Chamnahn and Lisa Kongtahworn
 Ann and Aaron Koopal
 Gail and Joe Kotval
 Randy Kramer
 Jan Berg Kruse and Rod Kruse
 Susan and Tom Kuyper
 Erich and Tami Lage
 Ruth and Joseph Lakers
 Nancy and Robert Landess

2016 DONORS

Chuck and Jennifer Larson
 J.D. and Arielina Larson
 Paul and Sally Latta
 Steve Laudick
 Darlene Lawler and William Lewis
 Jennifer Leachman
 John Leachman
 Raymond Learsy
 Robert and Liz Lee
 Jennie LeGates and Fritz Wehrenberg
 Deanna R. Lehl
 Ann Lehmann
 Karen and Charles Leibold
 Harriet and Duane Leitch
 Peggy and Jim Leonardo
 Janet and David Leslie
 Barbara and David Lettween
 Caroline W. Levine
 Cal and Diane Lewis
 Christopher Lewis and Jeff Howey
 Jesse and Linda Lewis
 Jonathan Lewis
 Elizabeth Lidgett and Nick Renkoski
 William and Kathleen Lillis
 Kelli and Brian Linnemeyer
 Margey and Jack Lipovac
 Michael Lipsman
 Tony and Phyllis Lisac
 Mitsi Lizer and Bret Ripley
 Edward Loeb
 Joseph and Christina Logsdon
 Sarah and Eric Lohmeier
 Lori and Brad Long
 David and Jennifer Lorbiecki
 John and Nicole Lozier
 Richard and Kaye Lozier
 Rick Lozier and Kathryn Gamble Lozier
 William and Kristi Lozier
 Gene Lucht and Gail Sheridan-Lucht
 Susan Lundstrom
 Rita and John Luther
 Barbara and Dick Lyford
 Mary Lynch
 Carolyn Lynner and Keith Thornton
 David W. and Laura Mackaman
 Jim MacKay and Karen Reichardt
 Susan Madorsky and Edward Bruggemann
 Brianna Mahoney
 Rosemary Mahoney
 Anita Mandelbaum
 Cyril and John Mandelbaum
 Justin Mandelbaum and Li Zhao
 Katherine and Joshua Mandelbaum
 Paul and Lynn Mankins
 Ed and Elizabeth Mansfield
 Leslie and Joseph Margarones
 Geoff and Cheryl Marsh
 Laura Mate and Brent Pattison
 James and Kara Mathis
 Jeanine and James Mauck
 Kent and Sheila Mauck
 Madelyn and Phillip Mayberry
 Judy McCarthy
 Lynn McCartney
 Patrick and Barbara McClintock
 Michael McCoy
 Matt McCright and Jane Robinette
 George and Megan McDaniel
 Christopher and Stacey McDonald
 Patrick and Claudette McDonald

William and Dorothy McGinnis
 Michelle McGovern and Jack Janda
 Nancy and Randy McGuire
 John and Theresa McIlhenny
 Edwin McIntosh and Jacque Fletcher
 Bruce McKee
 Robert McLearen Jr.
 Teresa McMahon and Garth Frable
 Sara McMillan
 Mike and Robin McNichols
 Emily and Mike Mead
 Connie Meester
 F. Terry Melton and Phyllis V. Blood
 Charles Mertes
 Raymond and Shirley Michel
 Brent and Ann Michelson
 MidAmerican Energy Foundation
 Jim and Barbara Miles
 Barbara and Harlan Miller
 Amy Miller
 David and Jane Miller
 Jami and Ben Milne
 Mike and Dianne Milobar
 James and Diana Mincks
 Jerry Minor
 Cynthia Mitchell
 Joseph Mitros
 Robin Mohrfeld and Ryan Meier
 Daniel Molyneaux
 Polly Moore
 Sherri Moore
 Diane Morain
 Paul and Gloria Morris
 Donald Mostrom and Etta Berkowitz
 Brenda and Bernard Mouw
 Robert and Tracy Mullen
 Mary Muller
 Clayton and Julie Murphy
 Brian Murray and Jeff Hartman
 Marilyn Musser
 Diane Myers
 William and Joan Nassif
 Joe and Marla Naumann
 LaVonne Neerland and Stephen J. Voit
 Julie Nemeth
 Kent Newman
 Signe Newman and John Maly
 Judith and John Nicholson
 Roy and Mary Nilsen
 Arthur and Patricia Nizzi
 Toni and Ron Noah
 Nancy Norman and Keith A. Uhl
 Paul Novak
 Jason Nunemaker and Carla Herling
 Sarah and Sam O'Brien
 Nancy O'Connell
 Joel and Kathy Olah
 John and Rosemary Olds
 Doug and Heather Olson
 Marlene and Gary Olson
 Robyn and Russell Olson
 Eileen O'Meara
 Stephen Orr and Chad Jacobs
 Jean O'Shea
 John Outcalt and Mary Jane Cobb
 Larry and Mary Overton
 Elizabeth Owens and William Brock
 Michael and Gail Pace
 Thomas and Elaine Palmer
 Rosemary Parson

Cynthia and John Paschen
 Kirk and Sue Patrick
 Tyler Patterson
 Judy and John Pauley
 Christine Paulson and Kevin Armstrong
 Frank Peak
 David Pearson
 Sandra Percy and Henry L. Whitfield
 Courtney Perry
 Pamela Pertzborn
 Carl and Renae Peters
 Fred Peters
 Nancy Peters
 John Peverill
 Sarah Pickard
 Julita and Thomas Pollard
 Robert and Mary Jo Pomerantz
 Carla Pope
 Judy Porter and Gary Cromer
 Allan Powers and Ann Mowery
 Lettie Prell and John Domini
 Thomas Press and Donna Paulsen
 Sheryl Prill
 Nancy Prizant and Ed Truslow
 Marti Puff
 Glenn and Florence Purnell
 Timothy and Rosemary Rahm
 Donald Raker and Susan Roxburgh
 Kelly M. Rawlings and Mark J. Hillenbrand
 Sheila and Charles Rayburn
 Beth Raymond
 Connie and James Reasoner
 Michael and Kristin Reck
 Treva Reimer and Keith Ratzlaff
 Frederick Reindel
 Artis Reis and Mark Smith
 Mary M. Riche
 Kevin and Robin Riggins
 Sandra Riggs
 Robert and Kay Riley
 Kyle Ripp
 Wes and Karen Ritchie
 Cody and Nathan Ritz
 Brian and Nancy Robbins
 Brett Roberts
 John Roberts
 Lois Roets
 Craig Rogers and Margaret Wilcox
 Donald Rogerson and Darcy Horn
 Chris and Janece Rohwer
 Joseph and Karen Romano
 Jessica Rooker
 Mark and Janet Rosenbury
 Thomas Ross and Nanette King
 Joanne and Jonathan Roth
 M. Jessica Rowe and Thomas T. Tarbox
 Sarah and Jon Rubach
 Brenna and Craig Rueschhoff
 Sandy and David Ruhs
 Lori Sacco and Terry Sharp
 Paul Sacks and I. Pour-El
 Charles and Katherine Safris
 David and Kris Saggau
 Neil and Debra Salowitz
 Christine and Robert Sand
 Vicki and Kevin Sanders
 Valerie Sandford
 Carolyn and Richard Santi
 Jenelle and James Sarcone, Jr.
 Joann Sargent

Patrice Sayre
 Sam F. Scheidler
 William and Joan Scherle
 Ralph and Joanna Schilling
 Steven and Cristen Schipper
 Richard and Jacqueline Schmeel
 Mark and Barb Schmidt
 Joseph Schneider
 William and Karen Schoenenberger
 Michael and Lynn Schoonover
 Russ and Diane Schrage
 Jack and Georgianne Schreiber
 Bert and Nancy Schroeder
 Ben Schuh
 Mary Ellen Schulte
 Kenneth and Linda Schultheis
 Ronald Schulz
 Beth and Daniel Schupp
 Amy Scott
 David and Mary Scott
 Senior College of Greater Des Moines
 Sara Sersland
 Linda and Larry Severidt
 Katie Seymour and Wendell Shepherd
 Nancy and Scott Shafer
 Carrie and Evan Shaw
 Dane and Christina Shelton
 Bruce and Barbara Sherman
 Kevin and Amie Shires
 ViVi Shirley
 Craig and Kathy Shives
 Mary Siberell
 Phil and Diana Sickles
 Will and Joshua Signs
 Charles Silet
 Jan Sime
 Dana and Ronata Simon
 Kathy and Jim Simmons
 Linda Simonton
 Robert and Hannah Singer
 Manuel and Dawn Siprut
 Patricia Skeffington and Jerry Vos
 Dan and Patty Skokan
 Sue Slater
 Frank and Dee Smith
 Jeanne and Scott Smith
 Lorna J. Smith
 Mary and Blair Smith
 Paula and Dennis Smith
 Rhonda Smith
 Maryanne and Robert Sobiech
 John Sodak
 James H. Sommers
 Dale and Barbara Sorensen
 Neal Spence and Suning-Cao
 Jim Spevak
 Tiffany and John Spinner
 Tori Squires
 Ryan Staiert
 Nichole Staker and Ruth Smith
 Lawrence and Marilyn Staples
 Michael and Simma Stein
 Antoinette Stevens
 Chad and Lori Stevenson
 Nancy and William Steward
 Clarke and Pamyla Stewart
 Carolyn and Roger Stirlor
 Susan Stocum
 Philip and Margaret Stoffregen
 Dave Stone

Scott and Pat Stouffer
 J. M. Sullivan
 Jayne A. Sullivan
 Rick and Karen Swalwell
 Keith and Nancy Swanson
 Lynn Swanson
 Marie and Scott Swanson
 Mathilde Brown Swanson and Richard Swanson
 Vivian Swanson
 Thomas Swartwood and Terri Combs
 Benjamin and Joyce Swartz
 David and Denise Swartz
 Laura and Michael Sweet
 David and Dianne Swieskowski
 Stephen and Cheryl Sypal
 Sandra and Robert Tatge
 Kenneth and Cathy Talcott
 Tamale's Industry
 Dawn Taylor
 Ellen Taylor and Harvey Harrison
 Megan and Howard Tempero
 Chuck and Sylvia Terlouw
 Mary and Mike Thiiges
 Charles Thompson
 Jenna Thompson
 Laurie and Brent Thompson
 Savan and LeAnn Thongvanh
 Johanna and Brian Tollas
 John W. Tone
 Mary Pearsall Torgoman
 Jenny and Rod Townsend
 Leann Treloar and Scott Galenbeck
 Beth Triebel
 Russ and Alana Trimble
 Kathleen A. Trinder
 Melinda and Lee Turnbull
 Eileen and Paul Tyler
 Gary and Patricia Van Dyke
 James Reese and Peggy Van Kirk
 Joyce and Bruce Vandegrift
 Robin and Russell Vanderhoef
 Roberta Vann and Fred O. Lorenz
 Tim and Bobbie Jo Vastine
 Lisa Veach
 Robert and Molly Veenstra
 Dragana Kostic Veneziano
 and Louis Veneziano
 Dirk and Adele Ver Steeg
 Zac and Sarah Voss
 Myra and Gerry Waggenspack
 Marvin and Marie Walker
 Martin and Suzanne Walsh
 Sally K. Walsh
 Hal and Jan Walter
 Rick and Marcia Wanamaker
 Bill and Jana Warren
 Anne and William Waskom
 Ivan and Anne Webber
 Duane and Mary Rose Weiland
 Mark and Karrie Weinhardt
 Steve and Linda Weitz
 Douglas and Sarah Wells
 Sarah Werning
 Eric and Jamie West
 James and Kathleen West
 Patricia B. Westphal
 John and Joan Wetherell
 Chuck and Tracy Wheeler
 Jeanne White and David Sampel
 Toni and Bill Whitman

Malinda Wiesner
 Deb Wiley and John Schmidt
 Robert and Jean Williams
 Beth Wilson
 Jean and George Wilson
 Annabel Wimer
 Ken Winber
 Sandra and James Windsor, III
 Art and Sue Wittmack
 Kerry Burrows Wood and Chris Wood
 Molly Wood
 Andrea Woodard
 Paul Woodard
 James C. Work
 Philip and Karen Worth
 Amy and Thomas Worthen
 Fredda Wright
 Ron and Katharine Yarnell
 Kerald and Mary Yearnis
 Ellen Yee
 David Yepsen and Mary Stuart
 Warren Young
 Terry Zeimetz
 Dan Zimmerman
 and Jennifer Graham Zimmerman
 April Zingler
 Roger and Jane Zobel

In Kind Support

American Enterprise Group, Inc.
 Arts & Ends Contributors
 Big Green Umbrella Media
 Boesen the Florist
 Business Publications
 iHeart Media
 Iowa Public Radio
 Register Media
 Jason Walsmith Photographer
 Connie Wilson Design

Edmundson Honor Society Members Established 2012

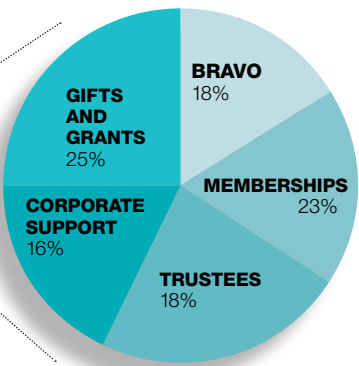
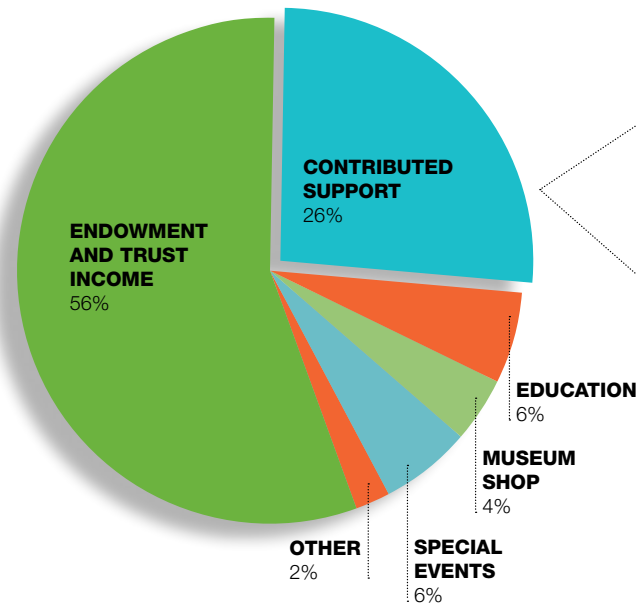
Anonymous (2)
 Emily Bahnsen
 Linda Bisignano
 John Brady Foundation
 Margaret Brennan
 Richard L. Deming, M.D.
 Jon and Mary Doidge
 Marian Easter
 Doris M. Eby
 M.C. Wijkman Glickman Fund
 Velta E. Goodwin
 Mary Gottschalk
 David Hurd
 Paul Kasal and Thomas Stoops
 Madelyn Lynn
 Patricia J. McFarland
 Linda and Michael Menth
 Mr. and Mrs. Gregg R. Narber
 Ms. Peggy Patrick
 Anastasia Polydorou
 Mickey and Neal Ryan
 Pat and Louis Schneider
 William E. Schuster (CA)
 Craig and Kimberly Shadur
 Keith Shaver
 Stephen Smith
 Willa Wenzl

OPERATING REVENUES AND SUPPORT

The Des Moines Art Center is a 501(c)(3) non-profit organization whose mission is to engage diverse local and international audiences with the art of today through its museum and school, adding to the cultural record through collections and programs.

REVENUES AND SUPPORT

CONTRIBUTED SUPPORT



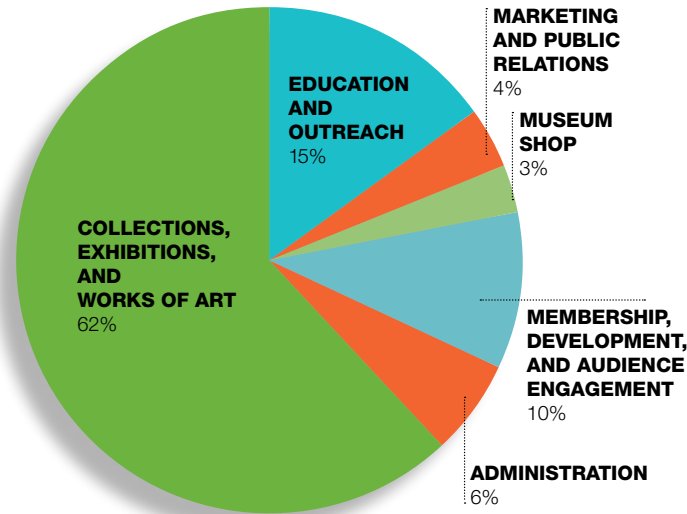
EXPENSES

2016 FINANCIAL SUMMARY

Operating Revenues and Support	\$6 million
Total Assets	\$124 million
Total Net Assets	\$123 million

2016 ATTENDANCE

Des Moines Art Center	124,048
John and Mary Pappajohn Sculpture Park	52,211
Subtotal	176,259
Des Moines Arts Festival	255,000
Total Attendance	431,259



BOARD OF TRUSTEES 2016

OFFICERS

Kyle Krause
PRESIDENT
Patricia McFarland
VICE PRESIDENT
Toni Urban
SECOND VICE PRESIDENT
Stacy Polydorán
SECRETARY
James Wallace
TREASURER
James Hubbell, III
CHAIRPERSON & EX-OFFICIO

BOARD

Andrea Abel
Julie Brenton
Joseph H. Ceryanec
Graham Cook
Richard Deming
Lois Fingerman
Jason Gross
Christine Hensley
Bruce Hughes
Dale Jansen
Darren Jirsa
Mary Kelly
Dan Keough
John Krantz
Lisa Kruidenier
Jeanne Levitt
Warren May
Mike Miller
Pat Schneider
Craig Shadur
Mike Simonson
Dennis E. Young

HONORARY TRUSTEES

Mertze Anderson
Pamela Bass-Bookey
Woodward G. Brenton
Robert Burnett
Elaine Estes
Louis Fingerman
Mell Meredith Frazier
Johnnie Friedman
Barbara Gartner
Elise Shuler Geraghty
Michele Griswell
Charles S. Johnson
Lana Jones-Gould
Richard S. Levitt
Harriet S. Macomber
Marvin E. Mazie
Tom Meredith
Judith Milligan
Nancy Powell Montgomery
Gregg Narber
John Pappajohn
Mary Pappajohn
Katie Peverill
Suku Radia
Cynthia Rehm
Gail Richards
Lucia R. Riddle
Lou Schneider
Mary Seidler
Gaylord Torrence
Thomas N. Urban
Timothy J. Urban
William F. Vernon
Fred Weitz

STAFF 2016

ADMINISTRATION

Jeff Fleming
EXECUTIVE DIRECTOR
Sue Lundstrom
EXECUTIVE ASSISTANT

BUILDING AND GROUNDS

Don Burkhead
ENVIRONMENTAL SERVICES DIRECTOR
Kurt Nicholson
FACILITIES MANAGER
Kevin Brown
Brian Evans
Matthew Lewin
Gene Swan
MAINTENANCE STAFF

BUSINESS OFFICE

Cheryl Tuttle
SENIOR DIRECTOR OF FINANCE
Janet Weeden
HUMAN RESOURCES MANAGER

CURATORIAL

Alison Ferris
SENIOR CURATOR
Laura Burkhalter
CURATOR
Amy N. Worthen
CURATOR OF PRINTS AND DRAWINGS

EDUCATION

Jill Featherstone
DIRECTOR OF EDUCATION
Haley Babcock
STUDIO EDUCATION MANAGER
Sarah De Santis
STUDIO EDUCATION ASSOCIATE
Tracy Duran
STUDIO EDUCATION DIRECTOR
Mia Farrell
STUDIO EDUCATION ASSISTANT
Kara Fedje
MUSEUM EDUCATOR
Alex Grapp
STUDIO EDUCATION ASSISTANT
Maggie Harlow-Vogt
STUDIO EDUCATION MANAGER
Rachael Jackson
OUTREACH MANAGER
Megen O'Toole
MUSEUM EDUCATION ASSOCIATE

INFORMATION TECHNOLOGY

Robert Reeves
SYSTEMS ADMINISTRATOR

INSTALLATIONS

Jay Ewart
CHIEF PREPARATOR
Mindy Meinders
ASSOCIATE PREPARATOR
Jeff Ashe
Brad Ball
Samantha DesRochers
INSTALLATION TECHNICIANS

MARKETING AND COMMUNICATIONS

Christine Doolittle
DIRECTOR OF MARKETING
AND PUBLIC RELATIONS
Megan Bannister
SOCIAL MEDIA MANAGER
Barbara Briggie-Smith
DEVELOPMENT AND COMMUNICATIONS ASSOCIATE

MEMBERSHIP AND DEVELOPMENT

Emily Bahnsen
DEVELOPMENT DIRECTOR
Jerrold Jordahl
GRANTS ASSOCIATE
Debra Kurtz
DIRECTOR OF MEMBER EXPERIENCES
Julia Mason Gray
MEMBERSHIP MANAGER
Leslie Onthank
MEMBERSHIP AND DATABASE ADMINISTRATOR

MUSEUM SHOP

Sarah Jane Shimasaki
RETAIL OPERATIONS DIRECTOR
Ellen O'Neil Harris
LEAD SALES ASSOCIATE
Mary Lou Grotewold
SALES ASSOCIATE

PROTECTION SERVICES

Chad Bentzinger
SECURITY DIRECTOR
Andy McDonald
Michael O'Neal
CHIEF GUARDS
Myron Anderson
SECURITY OPERATOR
Rollie Bramhall
Ralph Briggs
Ted Brubaker
Walt Brumbelow
Andy Buch
Milton Bunce Jr.
William Dawe
Tom Dodge
Thomas Dolezal
Trudy Dolezal
Rhonda Fingerman
Vance Fischer
Donald Gage
Eileen Gloor
Christopher Haines
Ann Koopal
Ernest Moore
David Thrasher
SECURITY GUARDS

REGISTRATION

Michelle Ryan
CHIEF REGISTRAR
Megan Cohen
ASSISTANT REGISTRAR/CURATORIAL ASSISTANT
Sydney Royal-Welch
ASSOCIATE REGISTRAR

VISITOR SERVICES

Staci Harper Bennett
VISITOR SERVICES SUPERVISOR
Caitlin Cisar
Inta Garrett
Sharyl Smith
VISITOR SERVICES ASSISTANTS

EDMUNDSON ART FOUNDATION, INC.
4700 GRAND AVENUE DES MOINES, IOWA 50312
WWW.DESMOINESARTCENTER.ORG

Non-Profit
U.S. Postage
PAID
Des Moines, IA
Permit No. 2881

DES
MOINES
ART
CENTER

entirelyunexpected



A visitor favorite, Mark di Suvero's *T8* is back in the John and Mary Pappajohn Park after leaving for a new paint job. Our amazing installations crew spent two days successfully reinstalling the large complex sculpture.

