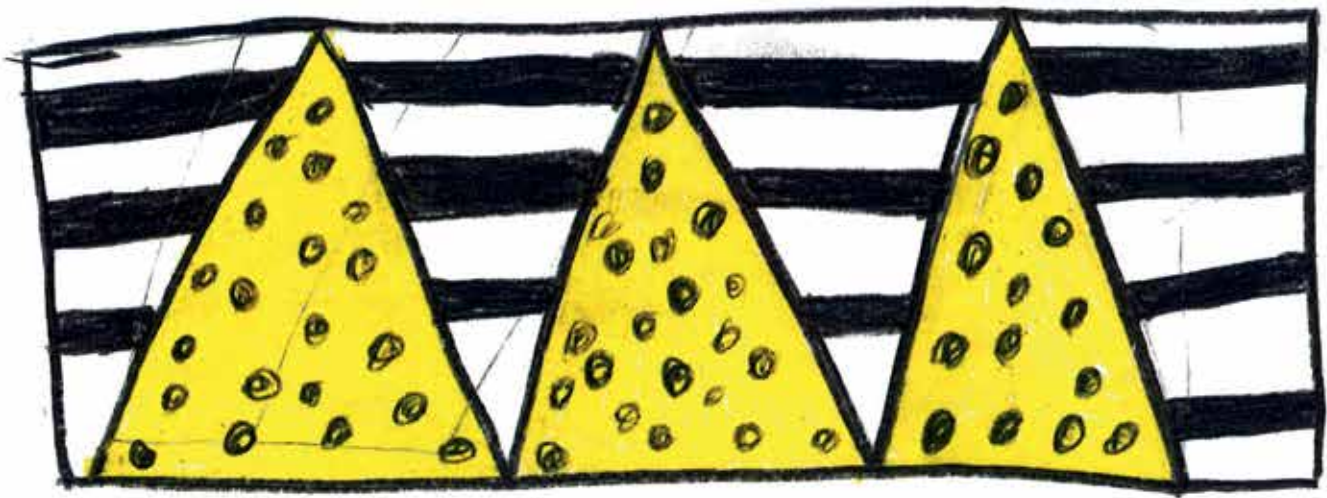


What I liked about the Art Center was that the room full of pictures and it was really dark. I like the painting of the pyramids and the patterns. I also like the dance that Ben taught us. I like the Sun flower seed sculpture because the seeds looked real and I liked the story of why the person made the sculpture. I also liked when we made the accordion books + my dad made one too. I liked the wood house sculpture thing.



ARTIST: ROY LICHTENSTEIN



MESSAGE FROM THE DIRECTOR AND THE PRESIDENT

New acquisitions to the Pappajohn Sculpture Park. Unprecedented community outreach. Innovative and challenging classes. A YEAR TO REMEMBER.

2015 was another year to remember at the Des Moines Art Center. Major acquisitions from John and Mary Pappajohn completed their extraordinary gift of important artworks creating the Pappajohn Sculpture Park in downtown Des Moines. These included sculptures by Willem de Kooning, Mark di Suvero, Ellsworth Kelly, Jaume Plensa, Ugo Rondinone, Richard Serra, and Tony Smith, among others. Additional noteworthy gifts came from Stacy Polydorán, including works by Jim Hodges, Josiah McElheny, and Robert Therrien. Purchases include major artworks by Nick Cave and Mickalene Thomas. Exhibition highlights such as *Field, Road, Cloud: Art and Africa*; *Fiber: Sculpture 1960 – present*; *Laurel Nakadate: Strangers and Relations*; and *East and Beyond: Helen Frankenthaler and Her Contemporaries* showcased new accessions to the collections as well as contemporary dialogues in the field.

Art Center staff continued to develop pathways for active participation in our exhibitions and educational programs. The “knit bomb” project, in conjunction with *Fiber: Sculpture 1960 – present*, drew more than 400 participants; more than 270 members of the public saw themselves

in the exhibition *Selfie: Self Portraits From the Permanent Collection*. More than 7,000 votes were cast when we partnered with *The Des Moines Register* for the exhibition *It’s Your Choice*. We expanded our outreach efforts to include partnerships with 20 social service organizations, and the fourth-grade tour program added another district to our list of participating schools. The studio program continued to offer innovative and challenging classes to the public, such as those offered in our new technology lab. Member groups Art Noir, Print Club, and Salon 4700 grew and expanded the Art Center’s reach into the community. In particular, Salon 4700 exceeded our expectations for member participation in its inaugural year.

We completed several capital improvement projects, including the renovation of the landscape installation, *Greenwood Pond: Double Site*, by Mary Miss, and several visitor service enhancements. These included renovations of existing restrooms on the lower level of the Saarinen building and the creation of a new, family and handicapped accessible restroom near the Information Desk. We also concluded conservation work on eight major sculptures in the collections, including Carl Milles’ *Man and Pegasus*, which graces the courtyard reflecting pool.

We could not be the institution we are today without the support and participation of our members, our board of trustees, and the community at large. Through their ongoing financial assistance, we were able to create several art acquisition endowments, including the Kyle and Sharon Krause Art Acquisition Fund and the Pamela Bass-Bookey and Harry Bookey Moving-Image and Time-Based Art Fund. Additional support was also provided for the Fingerman Lecture Series and the Toni and Tim Urban International Artist-in-Residence program. It takes a community to grow and flourish, and we find abundant assistance in the Des Moines metro and in the state of Iowa. Thank you all for your support.

Jeff Fleming DIRECTOR
 Kyle Krause PRESIDENT, BOARD OF TRUSTEES

LEFT
 Shown here at twilight in the Pappajohn Sculpture Park, Mark di Suvero’s *T8* is one of the many outstanding gifts accessioned by the Art Center in 2015 from John and Mary Pappajohn.

Mark di Suvero (American, born China, 1933)
T8, 1987
 Painted steel
 Overall: 343 x 288 x 444 inches
 Des Moines Art Center Permanent Collections;
 Gift of John and Mary Pappajohn, 2015.12
 Photo © Cameron Campbell

BELOW
 Docent Roy Nilsen sheds some light on Dan Flavin’s *Untitled (For Ellen)* with a group of children from Hispanic Educational Resources’ early education center Conmigo.



EXHIBITIONS

Fourteen exhibitions in 2015 encouraged widespread community engagement and participation through voting for artwork for *It's Your Choice*, yarn-bombing Greenwood Park during *Fiber: Sculpture 1960 – present*, and posting selfies within the exhibition *Selfie: Self Portraits From the Permanent Collection*.

1 Field, Road, Cloud: Art and Africa
February 13, 2015 – April 19, 2015
Anna K. Meredith Gallery
Organized by the Des Moines Art Center



1

Single-Channel 5: Dance (part two)
Kent Monkman / *Dance To Miss Chief*
February 20 – June 15, 2015
Pamela Bass-Bookey and Harry Bookey Gallery
Organized by the Des Moines Art Center

2 The Departure of the Argonaut: Prints by Francesco Clemente
February 27, 2015 – May 17, 2015
John Brady Print Gallery
Organized by the Des Moines Art Center

Antique Abstraction
March 13, 2015 – September 2015
Blank One Gallery
Organized by the Des Moines Art Center

Iowa Artists 2015: Austin Stewart
April 30, 2015
Levitt Auditorium
Organized by the Des Moines Art Center



3



4

3 Fiber: Sculpture 1960–present
May 9, 2015 – August 2, 2015
Anna K. Meredith Gallery, I. M. Pei and Richard Meier buildings, Kyle J. and Sharon Krause Atrium
Organized by the Institute of Contemporary Art, Boston

Sea Life
May 22, 2015 – September 20, 2015
John Brady Print Gallery
Organized by the Des Moines Art Center

4 Single-channel 5: Dance (part three)
Rosemarie Padovano / *Paloma*
June 19 – October 4, 2015
Pamela Bass-Bookey and Harry Bookey Gallery
Organized by the Des Moines Art Center



2



1

EXHIBITIONS

**Laurel Nakadate:
Strangers and Relations**
September 4, 2015 – January 24, 2016
Anna K. Meredith Gallery
Organized by the Des Moines Art Center

4 It's Your Choice
September 17 – December 13, 2015
Blank One and Two Galleries
Organized by the Des Moines Art Center

East and Beyond
September 29, 2015 – January 17, 2016
John Brady Print Gallery
Organized by the Des Moines Art Center

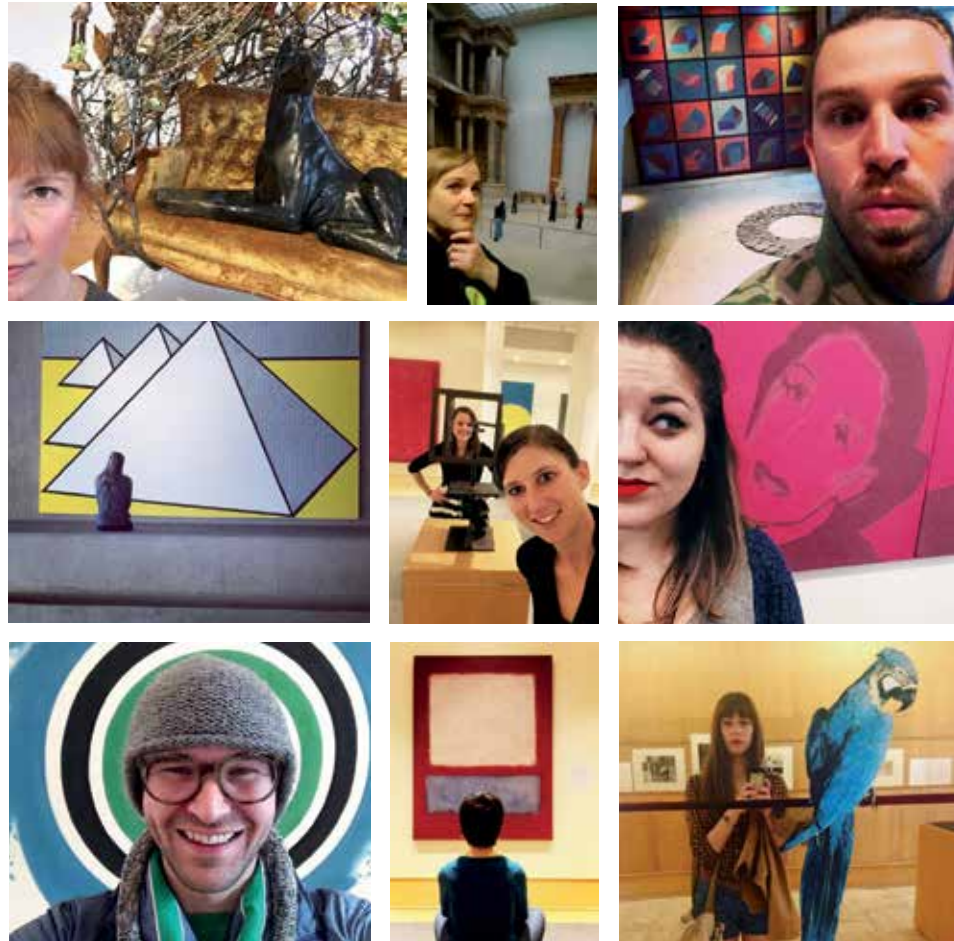
Single-channel 5: Dance (part four)
Rashaad Newsome / *Icon*
October 9, 2015 – February 21, 2016
Pamela Bass-Bookey and Harry Bookey Gallery
Organized by the Des Moines Art Center

**Iowa Artists 2015:
Jessica Teckemeyer**
October 29, 2015 – February 21, 2016
John and Mary Pappajohn Gallery
Organized by the Des Moines Art Center

**5 Selfie: Self Portraits From the
Permanent Collection**
December 18 – April 24, 2016
Blank One Gallery
Organized by the Des Moines Art Center



5



Visitors and Art Center staff members joined in the fun and took their own selfies in the SELFIE exhibition, around the museum, and around the world, #ArtCenterSelfie.



4

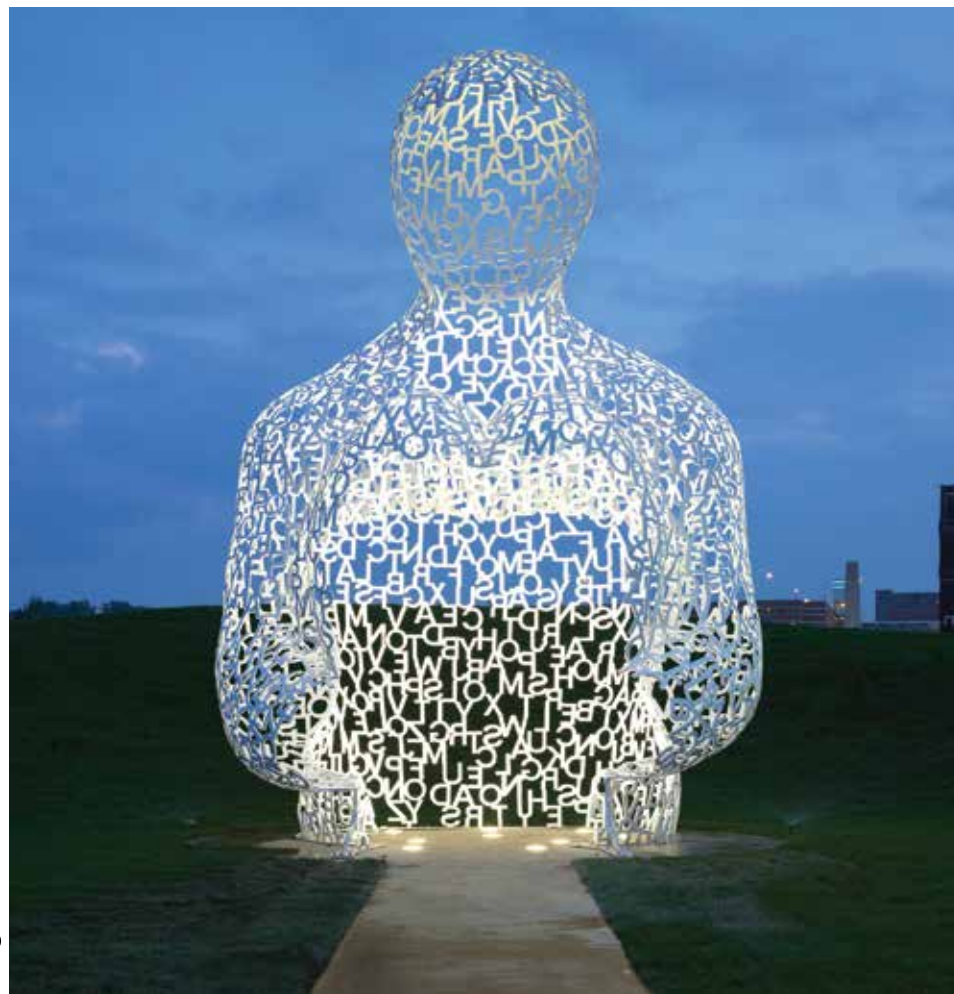
The Art Center accessioned 92 works of art into the permanent collections in 2015 through purchases and gifts. We are extremely grateful to the many donors who made these accessions possible.

- 1 Mickalene Thomas (American, born 1971)
Left Behind Again 2 2014
 Relief, intaglio, lithography, digital, collage, enamel paint
 Board: 44 x 65 1/4 inches
 Image: 41 3/8 x 63 5/8 inches
 Des Moines Art Center Permanent Collections;
 Purchased with funds from the Edmundson Art Foundation, Inc., and an anonymous gift, 2015.1



- Isa Genzken (German, born 1948)
Durchgang 1988
 Concrete and steel
 Overall: 96 7/8 x 47 1/4 x 27 9/16 inches
 Des Moines Art Center Permanent Collections;
 Gift of John and Mary Pappajohn, 2015.2

- 2 Jaume Plensa (Spanish, born 1955)
Nomade 2007
 Painted stainless steel / Overall: 27 x 17 x 18 feet
 Des Moines Art Center Permanent Collections;
 Gift of John and Mary Pappajohn, 2015.3
 Photo © Cameron Campbell



- 3 Willem de Kooning (American, born Netherlands, 1904 – 1997)
Reclining Figure 1969 – 1982 (see page 9)
 Bronze / Overall: 68 x 140 x 96 inches
 Des Moines Art Center Permanent Collections;
 Gift of John and Mary Pappajohn, 2015.11

- Mark di Suvero (American, born China, born 1933)
T8 1987
 Painted steel / Overall: 343 x 288 x 444 inches
 Des Moines Art Center Permanent Collections;
 Gift of John and Mary Pappajohn, 2015.12

- Tony Smith (American, 1912–1980)
Willy 1962, fabricated 2005
 Painted steel / Overall: 91 1/4 x 224 x 135 inches
 Des Moines Art Center Permanent Collections;
 Gift of John and Mary Pappajohn, 2015.25

- 4 Nick Cave (American, born 1959)
Rescue 2013
 Mixed media including ceramic birds, metal flowers, ceramic Doberman, vintage settee, and light fixture / Overall: 88 x 72 x 44 inches
 Des Moines Art Center Permanent Collections;
 Purchased with funds from the Edmundson Art Foundation, Inc., 2015.29.a-.b



SELECTIONS FROM THE NEW ACCESSIONS

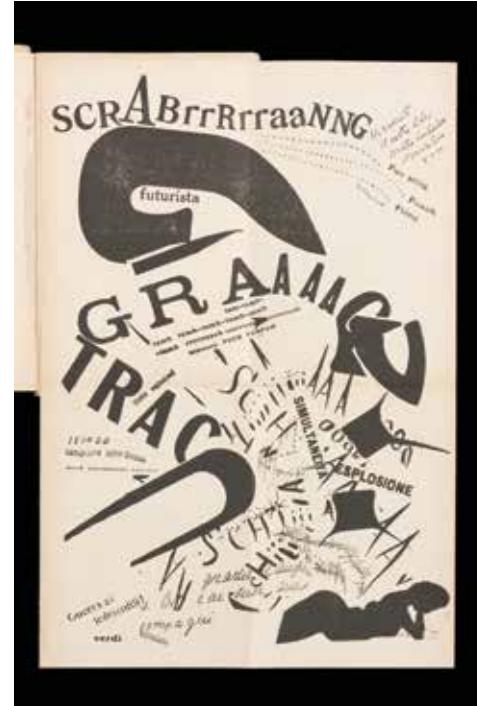
Each work accessioned in 2015 will enrich the collections as well as the community for years to come.

- 5 Filippo Tommaso Marinetti (Italian, 1876 – 1944)
Milano: Edizioni Futuriste di "Poesia"
Les Mots en Liberté Futuristes (Futurist Words in Freedom) 1919
Typographic text printed in black and red;
112 pages, including 4 foldout pages
Overall (book closed) 7 5/8 x 5 1/16 x 3/8 inches
Overall (book open): 7 5/8 x 10 1/8 inches
Des Moines Art Center Permanent Collections;
Purchased with funds from the director's initiative and the Fairall Trust, 2015.31



5 Outer case above and inside page right

Francesco Clemente (Italian, born 1952)
Perry Tymeson at Petersburg Press, New York,
Petersburg Press, Inc.
Untitled A 1986
Lithograph on paper
Overall: 27 x 119 3/8 inches
Des Moines Art Center Permanent Collections;
Gift of Petersburg Press, Inc., to the Des Moines Art Center in honor of Amy N. Worthen, Curator of Prints and Drawings and the mounting of the exhibition of *Francesco Clemente: The Departure of the Argonaut*, 2015.33



Tom Marion (American, born 1937)
Catherine Brooks (American)
Crown Point Press
One Second Sculpture 2002
Direct gravure with water bite aquatint printed in black and blue
Sheet: 32 x 23 3/16 inches
Plate (image): 20 15/16 x 13 1/4 inches
Des Moines Art Center Permanent Collections;
Gift of the Des Moines Art Center Print Club in Memory of Marilyn Baker, 2015.35

- 6 Josiah McElheny (American, born 1966)
Museum Storage: Please Do Not Remove the Labels 1994
Blown glass, wood cabinet, and text
Overall: 28 x 20 x 9 1/4 inches
Des Moines Art Center; Paul and Anastasia Polydorán Collection, 2015.39.a-1



6

Jim Hodges (American, born 1957)
Arena I (white white) 2006
Screenprint with 24 k gold leaf
Frame: 60 1/8 x 41 1/4 x 2 1/4 inches
Sheet: 56 3/4 x 38 inches
Des Moines Art Center; Paul and Anastasia Polydorán Collection, 2015.38

Robert Therrien (American, born 1947)
Untitled (snowman) 1985
Acrylic on acid free archival cardboard
Frame: 61 1/2 x 45 1/2 x 1 inches
Board: 56 x 40 inches
Des Moines Art Center; Paul and Anastasia Polydorán Collection, 2015.40

- 7 Mika Rottenberg (Argentine, born 1976)
Cheese 2008
Mixed media
Dimensions variable
Des Moines Art Center Permanent Collections;
Gift of Melva Bucksbaum and Raymond Learsy, 2015.41.1-205

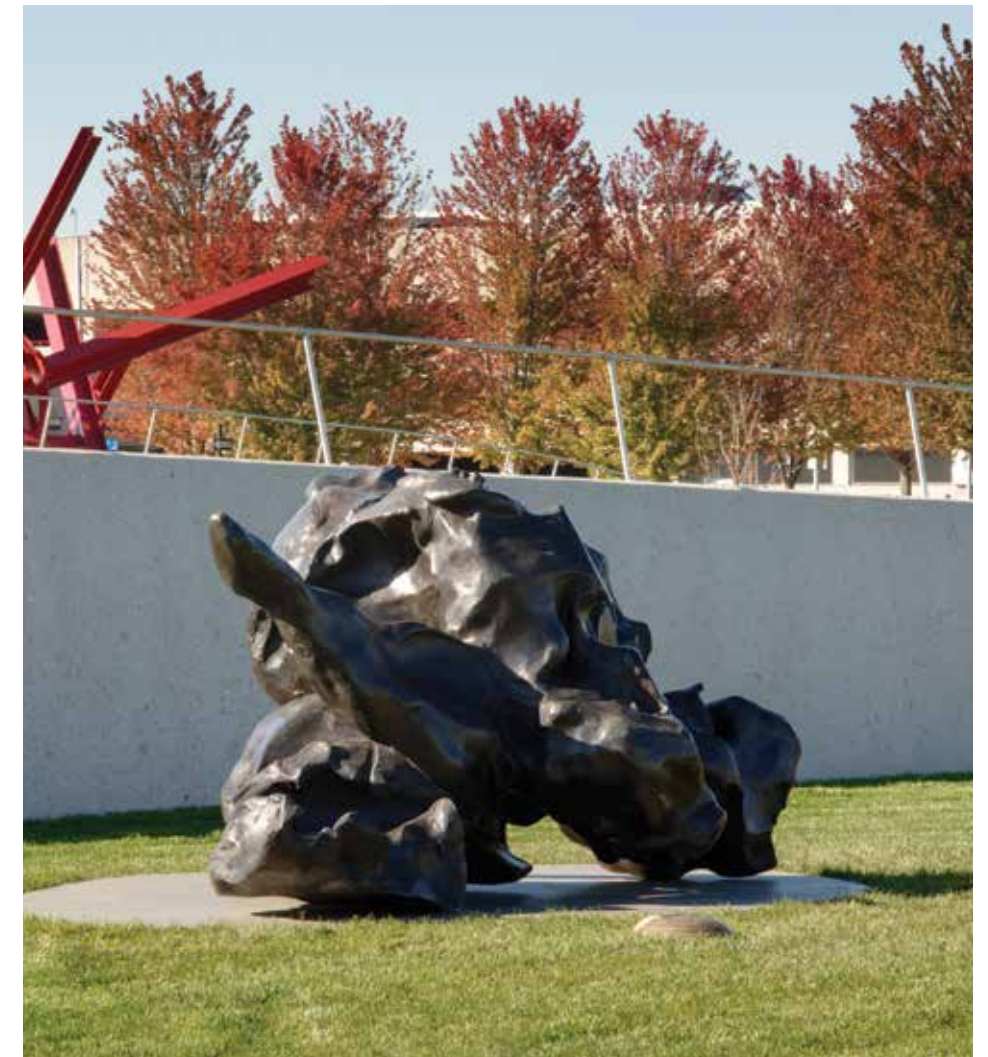


7

Rockwell Kent (American, 1882 – 1971)
Frontispiece, vol. 5, Casanova, Memoirs 1925
Relief print from a copper line relief plate mounted on woodblock, after ink drawing, on paper
Sheet: 10 x 6 3/8 inches
Image: 7 9/16 x 5 1/4 inches
Des Moines Art Center Permanent Collections; Gift of Keith Shaver in honor of Mary and Roy Shaver, 2015.64.5

Robert S. Moskowitz (American, born 1935)
The Thinker 1983
Pastel on paper
Frame: 55 1/2 x 32 3/4 x 2 inches
Sheet: 52 1/2 x 29 1/2 inches
Des Moines Art Center; Paul and Anastasia Polydorán Collection, 2015.81

Anna Gaskell (American, born 1969)
Untitled #35 (Hide) 1998
C-print
Image: 36 7/8 x 49 inches
Des Moines Art Center; Paul and Anastasia Polydorán Collection, 2015.90



9

TOURS

21,125
people
were served by
the tour program
in 2015

14,707
toured the museum.

5,560
visitors toured the John and Mary
Pappajohn Sculpture Park.

AUDIO TOURS

Nearly 2,100 unique callers listened to audio tours of the Pappajohn Sculpture Park and the Art Center's permanent collections, and another 100 people used iPod tours at the Art Center.

Included among the thousands of people participating in guided tours were more than 5,500 fourth-grade students from Des Moines, Indianola, Newton, Prairie City-Monroe, Saydel, S.E. Polk, Waukee, and West Des Moines Public School Districts. Students from five Urbandale elementary schools also began participating in tours in the fall.

FILMS

Twenty-three film programs were presented, with more than 3,400 people attending. Film festivals, as in years past, were the most popular screenings.

Docent Sharyl Smith leads a tour of fourth grade students through the museum.



Fingerman Lecture 2015: art critic Roberta Smith
Photo courtesy Eric J. Salmon

LECTURES AND GALLERY TALKS

Fourteen lectures were presented at the Art Center in 2015 serving more than 1,650 people. World renowned art critic Roberta Smith served as the 26th Fingerman Lecturer and spoke about her journey to *The New York Times* and writing art criticism in today's multi-platformed landscape. Former Senior Curator Gilbert Vicario's exhibition *Field, Road, Cloud: Art and Africa* was supported by a series of wide-ranging lecture topics: artist Nick Cave spoke about his work, social consciousness, and identity; University of Iowa Professor Christopher Roy's lecture drew from his vast well of firsthand knowledge of West African objects and culture; and Assistant Professor Kelly Baker, also from the University of Iowa, presented a gripping talk about the burden of water, sanitation, and hygiene-related issues in Africa. In the most creatively titled lecture of the year, "Raiding Neptune's Vault and Other Curious Enterprises," artist Mark Dion spoke about his work in concert with Curator of Prints and Drawings Amy N. Worthen's exhibition *Sea Life*. Jenelle Porter, Mannion Family Senior Curator at the Institute of Contemporary Art, Boston

DOCENTS

Guided tours led by 64 specially trained volunteer docents, engaged people of all ages in conversations about the permanent collections, special exhibitions, and architecture in 2015. The docents' aim is to engage visitors and empower them by teaching strategies to interpret works of art on their own. The Art Center's docents collectively donated more than 4,300 hours of service in 2015, including touring and training.

Twenty-one candidate docents were accepted into the training program in the fall.

Six docents celebrated 10-year anniversaries:

Jan Evans, Chris Hartoft, Roy Nilsen, Jon Oakland, Sharon Simmons, and Sandy Thompson



Artist Nick Cave (right) in conversation with former Senior Curator Gilbert Vicario. Photo courtesy Eric J. Salmon

858

people participated in off-site
lectures about the Art Center.

and curator of *Fiber: Sculpture 1960 – present* gave a revealing talk about her research and curatorial process in a behind-the-scenes lecture about the exhibition. A pioneer in the use of fiber as art medium, Magdalena Abakanowicz was the subject of esteemed curator Mary Jane Jacob, who presented a sobering lecture on the artist's life and art. Artist Laurel Nakadate participated in a candid interview about her photographic series "Strangers and Relations" with her husband, author Rick Moody, in conjunction with her eponymous exhibition.

Nearly 350 participants attended 11 gallery talks throughout the year. Art Center curators Laura Burkhalter, Gilbert Vicario, Amy N. Worthen, and Director Jeff Fleming engaged visitors in their respective exhibitions. 2015 Iowa Artist Jessica Teckemeyer spoke to 60 people on the opening night of her show in the John and Mary Pappajohn Gallery of the Richard Meier building.

CREATIVITY DAYS

Nearly 700 elementary students from the Des Moines metro, Perry, and United Community school districts attended the "Creativity Days" program, in which second-through fifth-grade students engaged in three enrichment activities inspired by design elements, repetition, and pattern. They rotated through a participatory tour of the collection, raised heart rates during a creative movement session, and created an accordion book adorned with stamped prints. Photos and thank you notes express the success of the days' events. (see front cover)



Creativity Days activities



Norwalk High School Days student poses as a cat enthusiast character

HIGH SCHOOL DAYS

The 2015 installment of High School Days took as inspiration the *Laurel Nakadate: Strangers and Relations* exhibition. In an effort to emulate the psychology of photographing a stranger (as was a condition in Nakadate's portraits), a list of characters was given to participating teachers in advance of their visit. Students randomly drew assignments and were asked to dress and act as their characters and not officially reveal their persona until a given time. After viewing Nakadate's show, students were

given the task of taking the sole portrait that would exist of a peer's character and consider how they would choose to capture the essence of this person. While the portraits were printed, students viewed the film *The Truman Show* and pondered philosophical discussion questions. The day's activities concluded with a group critique and final character reveal conducted in the lobby of the museum.



Architect Tim Hickman led two at-capacity tours of the Art Center which centered on looking at the unique challenges of the Art Center's spaces.

MINEFIELDS OF THE MUSEUM

The thematic series "Minefields of the Museum: Architecture, Restitution, Conservation, Forgeries, and Controversy" offered a variety of programs that revealed some of the issues that can cause headaches for the museum world.

Architect Tim Hickman led two at-capacity tours of the Art Center which centered on looking at the unique challenges of our spaces. The film *Adele's Wish* was screened, which shines light on the topic of restitution, after which Chief Registrar Mickey Koch spoke about the Art Center's provenance research. Art conservation was another focus of the series and it was expertly illuminated by Midwest Arts Conservation Center Objects Conservator Nicole Grabow, who has worked on a few Art Center sculptures in recent years. The crime of art forgery was raised in the film *Art and Craft*, which follows one of the most prolific art forgers in U.S. history. The same subject was then tackled in a sold-out lecture by Robert K. Wittman, founder of the FBI art crime team. Controversy was the final matter addressed by the film *Dirty Pictures*, which focused on the 1990 trial of Cincinnati Contemporary Arts Center Director Dennis Barrie, who was accused of promoting pornography by presenting an exhibit of photographs by Robert Mapplethorpe. Curator Laura Burkhalter then lead a discussion with the audience about a few of art history's critically reviewed exhibitions.

IOWA MUSEUM ASSOCIATION CONFERENCE

Education Director Jill Featherstone and Studio Education Coordinator Haley Babcock presented the session "Sharing Your Story with Visitors" at the 2015 Iowa Museum Association Conference in Pella on October 6. The presentation included sharing approaches on how to engage visitors of all levels with the stories emanating from our art, and how those stories are communicated through studio art classes, docent training, guided tours, and artist workshops.



ART SPECTRUMS LAUNCHED IN 2015

Art Spectrums, a free program for children with autism ages 5 – 12 and their families, was piloted in the fall with the purpose of enabling children with autism and their families to engage with artwork and have fun at a museum. Participants visit and discuss a work of art in the collections for inspiration and then make their own artwork in the studio. The program provides an opportunity for children with autism, siblings, parents, and other family members to have fun and make memories with art.



An expressive self-portrait created by an Art Spectrums student

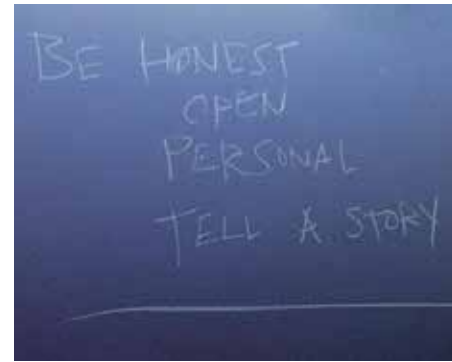


IMAGE AND IDENTITY COLLOQUIUM

In September, 15 participants from the Women's Residential Correctional Facility participated in an *Image and Identity* Colloquium led by artist Laural Nakadate and author Rick Moody. They explored such questions as "What is a photograph able, or not able, to capture about a person? Is professional photography more or less 'real' than a snapshot? How is a photograph a vessel of meaning?" The women received complimentary copies of the exhibition catalogue and a personal description of the series by Nakadate herself. After sunset, Nakadate took portraits of the women and each was given an 8.5 x 10 inch framed print.

In addition to hearing about Nakadate and her work, the women learned about each other. In advance of the meeting, participants were asked to select a few meaningful photographs and bring them to the colloquium. Rick Moody, well-known for his novel *The Ice Storm*, led the women in a writing exercise based on one of their photographs. The women were asked to write a letter to someone they care about, describing why they value the photo. Moody set four guiding principles for the exercise:

- Be honest
- Be open
- Be personal
- Tell a story

The women penned their letters while they waited to be photographed. Once the portraits were shot, the participants reconvened, and one by one showed their personal photo and read their letters aloud. It was a memorable night of sharing and compassion, demonstrating the emotional capacity of art.

Enrollment for studio classes totaled 15,034 in 2015, with 3,547 individual children and adult students attending 478 classes, workshops, and day camps.

Studio Programs offered 478 classes, workshops, and day camps over the course of three trimesters, with enrollment reaching 3,547 children and adults in the community. Attendance for these classes totaled 15,034. The Art Center's vital scholarship funds enabled 207 children and adults from the community to partake in classes. The scholarship program enriched the lives of students at more than 75 different elementary, middle, high schools, and colleges in the Des Moines metropolitan area.

Seven student exhibitions (children and adult) featuring artwork made in the Art Center's classes were installed in the Adrienne and Charles Herbert Galleries throughout 2015 and accompanying receptions drew 1,064 people. Additionally, one guest exhibition was mounted: West Des Moines Community Schools Impact of Art, which celebrates the visual arts accomplishments of students from all 14 West Des Moines Community Schools and recognizes scholarship recipients from their district.

CUSTOMIZED EDUCATION CLASSES

In addition to class attendance 4,412 children and adults attended customized education classes at the Art Center and in the community.

Fifty-five seventh-grade and 53 eighth grade students from St. Augustin Catholic

Students in the Spring 2015 Drawing and Painting class (ages 6 – 8) present their work



Sisters enjoying the symphony's activity at *The Four Seasons Art Sampler*.

School visited the Art Center weekly to participate in art classes for school credit.

Seventy-one preschool students from five early education centers participated in museum inspired art activities in their classroom. This program was developed to introduce the museum to young learners while participating in art activities designed to aid in the development of fine and gross motor skills.

Twenty-one Art Center students participated in a nine month collaboration with students from DanzArts, Des Moines Symphony Academy, and the Science Center of Iowa. This inter-disciplinary program was

designed to introduce the students to a variety of art forms and science inspired by Antonio Vivaldi's *The Four Seasons*. Art Center students participated in a nine month curriculum (that included a youth symposium with students from all of the collaborative partners), a community-centric Art Sampler, and a final performance and exhibition at the Temple of Performing Arts.

An additional Art Sampler, designed for families to participate in art activities and view demonstrations, meet instructors, and learn about classes presented a children's film festival, *Animated Adventures* produced by the Walker Art Center, Minneapolis. Attendance for these events totaled 590.

Twenty-two teens from metro high schools were enrolled in the inaugural Des Moines Art Center Teen Academy, a merit based scholarship program designed for college bound teens who want to advance their artistic skills and build a college portfolio. Additional custom education classes were offered to the Downtown School, Sacred Heart Catholic School, Holy Family Catholic School, Central Academy, and various Johnston elementary schools.



Teens create a community yarn bomb inspired by *Fiber: Sculpture 1960 – present* which they installed in Greenwood Park behind the Art Center.

Fifteen teens from the community participated in a community yarn bomb inspired by *Fiber: Sculpture 1960–Present* with artist Amy Caterina.

Throughout the year, the Art Center also collaborated with the Blank Park Zoo, the Des Moines Playhouse, and the Greater Des Moines Botanical Gardens.

The Art Center's community outreach program enriched the lives of more than 1,035 at-risk youth and adults in 2015. Growth in the program included the development of eight new community partnerships and programs. The attendance for outreach programming totaled 3,193.

Art education is used as a tool to help outreach participants acknowledge their unique identities and use artistic expression to overcome adversity and establish a sense of positive self-worth.

District Wide Program: Children and Families of Iowa Classroom served 35 youths who reside in Children and Families of Iowa (CFI) group homes and attend the District Wide program through the Des Moines Public School District. This program serves students in grades six through twelve who need intensive behavioral and academic support to help them reach graduation. The students spend two and a half hours a week during the school year participating in studio classes at the Art Center. Through this partnership the students are provided the opportunity to receive high school art credit to help them reach graduation. The studio art curriculum is an interdisciplinary approach that integrates studio art, academic subjects, and museum visits. Attendance for this program was 557. The 2014-2015 school year culminated with a student exhibition and performance at the Des Moines Community Playhouse. The exhibition consisted of highlights of the students' work made at the Art Center. Attendance for the exhibition and performance was 75.

Beginning in September, 20 students from **FOCUS High School** began participating in weekly art classes and museum visits. FOCUS provides a safe, educational, and therapeutic environment for students who are in need of additional support for their social, emotional, and academic needs as they transition into adulthood. The art classes are designed to help the students develop life skills through creative problem solving and self-expression. Attendance for this program totaled 159.

The Art Center provided art activities for pre-adolescent children and teens throughout the year at **Youth Emergency Services & Shelter**. YESS provides emergency shelter, respite, and counseling for children ages birth through 17. Attendance for this program was 182.

Afterschool Artist Program expanded to include all 11 Des Moines Public middle schools, enriching the lives of 106 students. Each school participated in a four- to six-week after school program designed to keep the youth engaged in a positive activity and promote creativity. Curriculum for all programs included a visit to the museum and related studio activities inspired by work in the museum. Classes were held both at the Art Center and at the individual school campuses making the program accessible to all students. Attendance for this program was 477.

Des Moines Alternative: Girls Program meets the educational needs of young women in grades six through eight who require intensive academic and behavioral instruction. Students participate in two six-week art classes throughout the school year. This class provides the girls a safe environment to gain confidence and promote positive self-expression. Attendance for this program was 135.

During the summer the Art Center provided literacy and art classes to 40 students in

Oakridge Neighborhood Services EDUcamp participants



kindergarten through fourth grade, who were participants in **Oakridge Neighborhood Services EDUcamp**. Attendance for this program was 147.

Forty-five parents and children from the **Oakridge program Parent and Child Together** visited the exhibition *Field, Road, Cloud: Art and Africa* and worked together to create an inspired piece of art.

Eighty-three mentors and youth from **Mentor Iowa** attended two unique afternoons of shared fun which included lunch, museum visits, and related studio activities. Mentor Iowa is dedicated to providing trained, volunteer mentors to abused, neglected, and delinquent children who are under the jurisdiction of the Juvenile Court in Polk County. This organization provides guidance to children in need of assistance to enhance their self-esteem, stability, and give them a chance for a positive future.

Fifteen mentors and teen mentees from **Community Youth Concepts' Mentor Advantage Program (MAP)** enjoyed an evening of dinner and creativity at the Art Center. The pairs visited the museum and worked together to create hand printed holiday cards and ornaments. MAP is an Iowa Mentoring Partnership program that builds relationships between middle and high school youth and professionals in the community.

Fourteen matches from **Big Brothers and Big Sisters of Central Iowa** worked together to create a mosaic bowling pin to help support their mentor program. This activity provided the youth the opportunity to give back to the community. Each of their completed bowling pins were auctioned off at the Big Brother and Big Sisters' annual fundraiser Bowl for Kids' Sake.

Nineteen residents and their adult mentors from **Orchard Place's Residential Treatment Center** attended three events at the Art Center that included a visit to the museum or Pappajohn Sculpture Park, lunch, and a related studio activity. Orchard Place's Residential Treatment Center serves children in need of intensive mental health treatment.

Fifty Orchard Place youth also participated in a four-week art class that focused on creativity, self-expression, and using art as a coping skill. Many of the youth find happiness and a sense of calm in creating art, and the weekly class provides them the opportunity to express themselves in a safe space. Orchard Place serves youth from a variety of backgrounds who struggle with severe psychological and mental illness.

Throughout the summer the Art Center provided literacy and art classes to 40 students in kindergarten through fourth grade, who participated in **PACE Juvenile Center's summer camp**. Each art activity encompassed a literacy component based on an age appropriate children's book. PACE Juvenile Center is Orchard Place's community-based operating division, providing skill-building services for a diverse population of children, teens, and families struggling with mental health and/or substance abuse issues.

Beginning in September, weekly art activities were provided to 10 teen girls participating in the **PACE Girls Program**. The art activities were integrated into their treatment program and were designed to assist in building self-confidence and positive self-expression, and promote healing. Attendance for this program totaled 74.

Voices to be Heard is a support group for family, friends, and children of an incarcerated loved one. Art Center faculty provided art activities for 32 children to promote education, creativity, and self-discovery.



Studio Education Director Tracy Duran and instructor Ramona Muse Lambert work with Connigo students.

Achieving Maximum Potential (AMP) is a youth-driven advocacy and leadership group for teens and young adults who have faced the challenges of out-of-home placement, whether foster care, group homes, shelters, or all three. The organization provides opportunities for service learning projects, advocacy, and educational/vocational assistance for the youth as they transition into adulthood. Monthly art activities were provided to aid the youth in building self-confidence and promote the importance of creativity and self-expression. In October, the youth from AMP collaborated with local artist and instructor Rachel Buse on building a cardboard umbrella inspired by the *Crusoe Umbrella* located in Cowles Commons in downtown Des Moines for the Boxed-in Design contest at Reggie's Sleep Out. The youth enjoyed the challenge of recreating a community icon out of unexpected materials. Attendance for this program totaled 215.

Through the **Lutheran Services of Iowa's Elder Program** the Art Center enriched the lives of 20 refugees from the Kingdom of Bhutan and Burma. Weekly classes focused on simple projects that introduced the elder students to art and language and allowed them time to work independently. The class demonstrated that art and visual language can overcome cultural and linguistic barriers.

Twenty children in kindergarten through fifth grade from **Ethnic Minorities of Burma Advocacy and Resource Center (EMBARC)** participated in literacy and art camps. The children explored a variety of children's books and created art inspired by the stories. Eight teenage girls from EMBARC's Community Fiber Program participated in a Fashion Lab class where they learned how

to repurpose old clothes into new items creating a variety of scarves and bags.

Forty students from **Children and Families Urban Mission** in kindergarten through fifth grade participated in two-week multidisciplinary art classes that integrated art, science, and literature. The students explored a variety of topics related to the natural sciences, read related children's books, and created artwork inspired by their learning. Attendance for this program totaled 71.

Hispanic Educational Resources' early education center Connigo is an early childhood learning center specializing in bilingual, culturally affirming educational programming and experiences for children and families. The Art Center provided a tour and art activity to 45 students ages 5 through 12 who attended the summer camp.

Fifteen clients of **Link Associates** had the opportunity to participate in the Big Art Series, a class designed to introduce self-expression through a variety of art media. After finding inspiration in the museum, the participants created paintings, drawings, prints, and sculptures. The class culminated in an exhibition that allowed them to present their artwork to family and friends. Link Associates provides people with intellectual disabilities opportunities to reach their goals. Attendance for this program totaled 188.

The Art Center continued to engage a growing audience in new and entirely unexpected ways.

SUMMER ON THE HILL

The Art Center's popular "Summer on the Hill" brought movies to the front lawn on the first Thursdays and music in the courtyard on the first Fridays of June, July, and August. The Free Flicks series showed a great array of movies—the classic Hitchcock *Rear Window*, the comedy *Tootsie*, featuring Dustin Hoffman, and the science fiction cult favorite *Blade Runner*, the director's cut. To add to film attendees' enjoyment, food trucks were available for refreshments during the movies. On First Fridays local bands Boomerang, Parranderos Latin Combo, and Mr. Baber's Neighbors attracted more than 300 attendees.



More than 250 guests supported the Art Center's community partnerships at the annual gala celebration.

COMMUNITY TAPESTRY

In conjunction with the Art Center's presentation of the exhibition *Fiber: Sculpture 1960 – present*, more than 400 fiber artists from 19 Iowa cities, four states, and as far away as England, contributed knitted, crocheted, and woven submissions in an effort to reimagine the spirit of the Art Center's iconic painting *From the Lake, No. 1* by Georgia O'Keeffe. The final, massive tapestry was displayed on the Art Center's Richard Meier building for two weeks during the summer. A public celebration for the tapestry's unveiling was held in July, attracting more than 400 people. Appetizers, beverages, and live music set the stage for the party on the plaza of the Richard Meier building.

GALA CELEBRATION: Celebrating the he(art) of our community

More than 250 guests attended this year's fundraising gala held in the newly renovated Capital Square atrium. Art Center patron Pat Schneider served as chair for the gala which highlighted the Art Center's commitment to community partnerships and its many and varied outreach programs. As part of the evening's festivities, a 10-minute video produced by the Art Center was shown featuring the Art Center's involvement with numerous community groups and incorporating interviews with former students, instructors, and partners, illustrating the power of art to positively change lives.

More than 400 fiber artists contributed knitted, crocheted, and woven pieces to reimagine the spirit of the Art Center's iconic painting *From the Lake, No. 1* by Georgia O'Keeffe, shown here hung on the the Richard Meier building.

DÍA DE LOS MUERTOS (DAY OF THE DEAD)

In early November, this annual celebration honored one of the founding members of the Art Center's Day of the Dead committee, Aurora Bejarano Lumadue. Entertainment featured Mariachi Los Aguilares and Danzas Los Jóvenes Embajadores. Nearly 2,000 attended this event.

FACILITY RENTALS

In 2015, 34 private rentals took place at the Art Center. Rental clients included Ahlers & Cooney, P.C.; Bankers Trust; Better Homes & Gardens; Design Alliance, Inc.; Faegre Baker Daniels LLP; Holmes Murphy; Kum & Go; and Principal Financial Group, Inc. Numerous wedding receptions took place at the Art Center as well, including nuptials celebrated by staff and friends of the Art Center.

Collaborative community events included partnerships with Des Moines Metro Opera, Drake University International Students Association, Drake University Zenith Chamber Music Festival, GDMLI Youth Leadership Initiative, Heartland Marimba Festival, and Iowa Public Radio, which hosted a breakfast with featured guest speaker Michel Martin, weekend host of All Things Considered.



SOCIAL MEDIA HIGHLIGHTS

Over the course of 2015, the **Facebook** audience increased by 85% to nearly 20,000 page likes. Through the use of **Twitter**, public knowledge of the Art Center's permanent collections increased through campaigns relating to the exhibition *It's Your Choice* as well as international initiatives like Museum Week, Ask A Curator Day, Free Museum Day, and more. In 2015, the Art Center's **Instagram** audience increased by 222% and remains one of the organization's most engaged online communities. **Live blogs** during lectures allowed those unable to attend to experience and learn along with the audience.

AWARDS & ACKNOWLEDGEMENTS

In August, the Art Center was named as a finalist for the Social Media Club Des Moines' annual Hashie Award in the category of Facebook: Best Nonprofit.

While the Art Center regularly shares information about upcoming exhibitions and community events on its social media account, staff also hosted a number of specific engagement programs and campaigns.

SLOW ART DAY

In April the Art Center participated for the first time in the international phenomenon of Slow Art Day by inviting visitors to slow down and spend at least 10 minutes looking at one work of art. After their experience, they received a participation button and many shared their experiences using the hashtag #DSMSlowArtDay.

#ArtCenterSelfie

As part of the exhibition *Selfie: Self Portraits From the Permanent Collection*, the Art Center invited museum visitors to see themselves in the exhibition by sharing their selfie using hashtag #ArtCenterSelfie. Visitor photos were displayed in the gallery along with the permanent collection works.



Roy Lichtenstein, *The Great Pyramid*, 1969
Upper level balcony, Pei building / Instagram photo by chuygonza



Andy Goldsworthy's *Three Cairns* in Greenwood Park
Instagram photo by calvalier



View to Greenwood Park over the Pei building spiral stairway
Instagram photo by j_slimm



Detail of Jaume Plensa's *Nomade*, 2007, with a full moon
Pappajohn Sculpture Park / Instagram photo by justinrogers

Instagram photos of a few of the TOP 10 MOST PHOTOGRAPHED PLACES AND PIECES in the Art Center are featured on its Instagram page. This audience grew 222% in 2015, becoming one of the organization's most engaged online communities.

TOP 10 MOST PHOTOGRAPHED PLACES AND PIECES

To acknowledge and appreciate the way visitors engage with the Art Center's collection and architecture on social media, staff compiled a list of the year's 10 most photographed places and pieces including works like Jaume Plensa's *Nomade* in the Pappajohn Sculpture Park and Dan Flavin's *Untitled (For Ellen)*, as well as places like the Richard Meier building's atrium, and the I. M. Pei spiral staircase.

MUSEUM SHOP

In 2015, the Museum Shop hosted several new events that contributed toward the goals of engaging the community and continuing to be a shopping destination in Des Moines. The first was the smART Summer Book Sale where visitors were invited to browse a wide selection of books for their next great summer read while sipping coffee in the lobby. In the fall, the Museum Shop staff teamed up with social media staff to start a blog, which included a fashion photo shoot featuring apparel, jewelry, and handbags. Gift Wrap 101 featured a gift wrap tutorial along with complimentary gift wrapping service. Come Out and Play provided an opportunity for visitors and their children to actively engage with an artful collection of toys in anticipation of the holidays. Success in attendance and revenue continued throughout the year with the annual Spring Fling, Holiday in July, and Members' Double Discount events.

MEMBERSHIP

3,196 members enjoyed a multitude of ways to interact with the museum through member groups, trips, exhibition opening previews, and special events.

In appreciation of member support, the Art Center hosted programs and events for members such as Art for Lunch, brunches, member orientations and tours, and evenings with curators and special guests such as artist Laurel Nakadate, architect Tim Hickman, lecturers Mary Jane Jacob, Robert Wittman, and many more. Three exhibition member previews were held throughout the year: *Field, Road, Cloud: Art and Africa*; *Fiber: Sculpture 1960 – present*; and *Laurel Nakadate: Strangers and Relations*. Attendance totaled 699 for these three openings. Members' Book Club participants discussed *Caveat Emptor*; *I. M. Pei: Mandarin of Modernism*; *The Value of Art*; *Ponzi and Picasso*; and other thought-provoking books.



Nearly 700 members attended exhibition opening previews including this *Fiber: Sculpture: 1960 – present* opening celebration.

ART NOIR

The affiliate group Art Noir experienced another banner year as the group reached nearly 600 members. Highlights from the year included HUE, the fourth annual color themed celebration; the Des Moines Art Center Big Hair Ball, themed “A Big Hair Blowout,” an unforgettable evening of

glamour and entertainment celebrating hair as a form of contemporary self-expression; Corporate Collection Tour at American Enterprise, Inc.; Not Your Grandma’s Gallery Talk+ Wine Tasting celebrating “No Shave November”; and Art Noir Holiday Studio, featuring handmade holiday gifts.



Art Noir’s Des Moines Art Center Big Hair Ball drew a creative and energetic crowd of nearly 600 guests and participants dressed to impress and astound!

SALON 4700

2015 was a stellar inaugural year for Salon 4700. The first year exceeded expectations by attracting 93 members. Numerous great events took place such as Salon 4700’s kick-off event; a dialogue with former Art Center Senior Curator Gilbert Vicario; cocktails with film director Michael Maglaras; and the biggest event: A Conversation With Creators. This progressive evening featuring four Des Moines artists at the Fitch Building was a highlight for many. Salon 4700 also participated in a family program in partnership with Studio Education’s Art Sampler, and offered an opportunity to enjoy brunch and an exclusive tour of the *It’s Your Choice* exhibition with Director Jeff Fleming. The year was concluded with an intimate evening and private collection tour at the home of long-time Art Center supporters Sigurd and Ann Anderson—a fitting and very special finale to the group’s year.

PRINT CLUB

Print Club continued its support of the Art Center’s permanent collections and exhibitions by offering a rich selection of educational programs and events. Highlights included talks on framing and living with art, a trip to the Poste Print Festival, a reception at a private collection, and artist talks by Catherine Brooks, Mark Dion, and Laurel Nakadate, who created the year’s commissioned print. Print Club members selected *Drumming and One Second Sculpture* by Tom Marioni as their annual gifts to the permanent collections and they voted to support conservation of Robert Delaunay’s lithograph *Saint Severin*.



Art Center patrons Jane Hinson and Lou and Pat Schneider with artist Joel Shapiro in his studio during the New York patron trip.



CONTEMPORARY COLLECTORS

Contemporary Collectors visited DuPont Pioneer’s corporate art collection at their Johnston headquarters in August, and Sharon and Kyle Krause’s home in October for an elegant reception and tour of their personal art collection. The Director’s Dinner attended by 90 members was held in late October at Ellen and Jim Hubbell’s home—a lovely evening with much camaraderie and enjoyment of their eclectic and fascinating personal art collection.

NEW YORK PATRON TRIP

In the fall, the patron trip to New York featured a tour of the Frank Stella exhibition (which included one of the Art Center’s works by Stella) at the Whitney Museum of American Art, and a visit to Joel Shapiro’s studio, which turned out to be an entertaining and informative two hour visit with the artist. The group saw a Broadway play, enjoyed dinner at Bobby Flay’s Café American, and participated in a highly informative tour of the Neue Gallery. The group also visited many art galleries in the Chelsea area and enjoyed their stay at the Standard High Line hotel, including a walk through the High Line linear park.



TOP LEFT Salon 4700 members, shown here with artist Larassa Kabel, enjoyed an evening of intimate conversations with artists in their studios in the Fitch Building during A Conversation With Creators.

LEFT Print Club members pose in the Fitch Building studio of printmaker Catherine Dreiss and painter Jeffrey Thompson.

ANNUAL FUND

THANK YOU to the following donors who have made significant financial contributions to the Des Moines Art Center over the past 26 years. Gifts were contributed to Art Center campaigns, the free admission program, annual operating support, conservation, art acquisition, programs, and more.

\$1,000,000+

Mr. Myron and Mrs Jacqueline N. Blank
Bravo Greater Des Moines
Melva Bucksbaum and Raymond Learsy
Gardner & Florence Call Cowles
Foundation
DuPont Pioneer
Ellen and Jim Hubbell
James W. and Helen Hubbell
David and Elizabeth Kruidenier
Maddie Levitt
Jeanne and Richard Levitt
Anna K. Meredith Endowment Trust
John and Mary Pappajohn
Principal Financial Group
Wallace Foundation
Wells Fargo

\$500,000 – 999,999

Pamela Bass-Bookey and Harry Bookey
John Brady Foundation
Margaret Brennan
City of Des Moines
Community Foundation of
Greater Des Moines
W. T. and Edna M. Dahl Trust
Des Moines Arts Festival
Charles and Karin Edwards
Herbert Lewis Kruse Blunck Architecture
Harriet Hubbell
Iowa Arts Council
Mary K. and Daniel M. Kelly
The Kresge Foundation
J. Locke and Harriet S. Macomber
The Fred Maytag Family Foundation
Meredith Corporation Foundation
National Endowment for the Arts

Polk County
Craig and Kimberly Shadur
Vision Iowa

\$225,000 – 499,999

Roberta Ahmanson
American Enterprise Group, Inc.
Aviva USA
Meier Bernstein Foundation
Matthew and Carolyn Bucksbaum
Robert and Gloria Burnett
City of West Des Moines
Cowles Charitable Trust
Patty and Jim Cownie Charitable Fund
The Des Moines Register
Dr. Louis and Lois Fingerman
Greater Des Moines Partnership
Georgia H. and Robert Helmick
Institute of Museum and
Library Services
Kyle J. and Sharon Krause
Henry Luce Foundation
Ellen Maytag Madsen Estate
Mr. and Mrs. Edwin T. Meredith
Mrs. Katherine Meredith
The Mid-America Group
Nationwide
Northwest Area Foundation
Louise R. Noun
Marvin and Rose Lee Pomerantz
Prairie Meadows
Gail and Stanley Richards
Mary and Stanley Seidler
Mary and Tom Urban
Toni and Timothy Urban
Dennis and Diane Young

Homesteaders Life Company
Darren R. Jirsa, D.D.S.
Mary K. and Daniel M. Kelly
Sara and Steven Marquardt
Randy E. McMullin
Meredith Corporation Foundation
O'Brien Family Foundation
Pappajohn Sculpture Park
Maintenance Fund
Anastasia Polydorou
Mary and Stanley Seidler
Substance Architecture
Wells Fargo
Dennis and Diane Young

\$5,000 – 9,999

Accordia Life & Annuity
American Equity Investment
Life Insurance Company
ASK Studio
Leslie Babich and Stacy Wanderscheid
Bank of America Foundation
Bankers Trust
Margaret Brennan
Sandra and C. Dean Carlson
James Carney
Casey's General Stores, Inc.
Joseph and LaNae Ceryanec
Graham Cook and Catherine Bennett
Richard L. Deming, M.D.
Faegre Baker Daniels LLP
Dr. Louis and Lois Fingerman
Helen Frankenthaler Foundation
Lillian Goldman Charitable Trust
The Mid-America Bank
Grinnell College
Marty Gross
GuideOne Insurance
Randall H. Hamilton and Bruce Hughes
Charlotte and Fred Hubbell
Hubbell Realty Company
The Iles Family-Dunn's Funeral Home
Jim and Debbie Israel
Fritz James
John Deere
Lisa Kruidenier
Lauridsen Family Endowment
Margaret and Warren May
Patricia McFarland
Michael H. and Gina K. Miller
Neumann Brothers, Inc.
Cleojean Olson
Jill and Mark Oman
Dr. Mary and Mr. Suku Radia
Gail and Stanley Richards
Debra and Douglas Roberts
John Ruan Foundation Trust
Patricia and Louis Schneider
Michael Simonson
Gordon J. Smith
Mary and Tom Urban
US Bank
VOYA Financial, Inc.
Mary Ann and James Wallace
Deborah and Douglas West
William Randolph Hearst Foundation
Willis Auto Campus
Workiva

\$2,500 – 4,999

American Enterprise Group, Inc.
Philip and Robin Bear
Belin McCormick, P.C.
Cheryl and Bill Bergren
Margo and Donald Blumenthal
Patricia and Bill Brenton

Sue Rutledge Brenton and
J.C. (Buz) Brenton
Robert Burnett
Charles Gabus Ford
Douglas B. Dornier M.D. and
Carole Villeneuve
John and Eileen Eckert
Katherine Elsner and Steven Adelman
Elaine G. Estes
Farm Bureau Financial Services
Fingerman Lecture Fund
Ms. Susan Fitzsimmons and
Mr. Jake Christensen
Carrie Marshburn-Fleming and
Jeff Fleming

Mr. and Mrs. William Friedman, Jr.
Barbara and Michael Gartner
Ralph and Sylvia G. Green
Charitable Foundation
Corine Hadley
Holmes Murphy & Associates
Dr. J. William and Mrs. Mary Holtze
Harriet Hubbell
Debbie and Michael Hubbell
Humanities Iowa
Trudy Holman Hurd and David Hurd
Hy-Vee, Inc.
JE Dunn Construction Company
Lana Jones Gould
Nicolette and Dan Keough
KPMG LLP

Diane and Keith Krell
Nancy J. Main
Drs. Robert and Andrea Margeas
LaDonna and Richard Matthes
Judith Milligan
Gregg and Kathleen Narber
Henry G. and Norma A. Peterson
Charitable Trust
Prairie Meadows
Martha and Jorgen Rasmussen
Amanda and Michael Reynal
Jody and Stan Reynolds
John and Lisa Rhodes
Lisa Rogers
Loretta and Robert Sieman
The Sharon A. Simmons Charitable
Foundation Fund
Dr. and Mrs. J. D. Stahl
Myrt Levin and Tom Stephenson
Sally Titus
Variety - The Children's Charity
Kay Ward
Willa Wenzl
West Bank
Robert L. and Ruth E. Wiese Trust
Connie Wimer and Frank Fogarty
Dr. Jeffrienne and Dr. Eytan Young
Alan Zuckert
Kathy and Steve Zumbach

\$1,000 – 2,499

A.E. Easter Family Foundation
Art4Moore
Badower's, Inc.
Julie M. Best
Carolyn Bucksbaum
Jackie and John Bucksbaum
Family Foundation
Jeff Chelsvig
Kaye C. Condon
George Davenport and Polly Starling
Mr. and Mrs. Herbert Eckhouse
Jenna and Jason Ekstrom
Essex Meadows, Inc.

Mary Joan Farver
Allison and James Fleming
The Frank Miller Scholarship Fund,
Drake University
Ann and John Ghrist
Jo Ghrist
Mary Gottschalk
Barbara Graham
Jason and Athamandia Gross
Charles and Janet Haas
Dr. Joseph D. Hall and Mrs. Carrie Hall
Mr. Stacey R. Henderson
Nancy Hewitt
Sara Hill
Ann Hintz

Will J. and Dixie Lee Hoekman
William R. Hornaday, Jr., M.D.
Dale J. Jansen
Joseph and Peggy Jester
Charles S. and Jaina Johnson
Joseph M. Dorgan Trust
Robert Josten
Lori and Sam Kalainov
Dr. James and Mrs. Mary Ellen Kimball
Dr. and Mrs. Josh Kimelman
Kum & Go
Marla Lacey
Mr. Mike and Mrs. Jane LaMair
Lint Van Lines
Nicola Mendenhall and
Wendell C. Speers
Donald and Janet Metcalf
Donald and Marcia Miller
Maureen Mondora and Sean Sexton
Michael E. Myszewski and
Martha James

Elizabeth and Edwin Nelson
Mr. Rolland W. and Mrs. Mary A. Nelson
Peter and Patricia Pashler
Jim and Muriel Pemble
Cynthia and Jack Rehm
Riley Family Foundation
Kimberly and Eric Roush
Renee and Steve Schaaf
Mindy and Gary Scholten
Jaey and Brenda Sedlacek
Dr. and Mrs. Robert R. Shreck
Jill Smith and Keith Walton
Peggy and Charles Strief
Ted and Kathy Stuart
Dr. Sally Studer
Target
Mr. Rick Tollakson
Urban Charitable Foundation II
Urban Charitable Foundation IV
Joyce Van Pilsum
Mr. and Mrs. F.W. Weitz
Mr. James F. and Ann C. Willer
Missy and Michael Wolnerman
Krenio Wright

\$500 – 999

Inger H. Anderson
Crystal Helbing and James Austin
Susan Barnes and Jean Davis
Amy Beattie and William Stowe
Becker Fine Stringed Instruments, L.C.
Bell-Pullen Arts & Culture
Scholarship Fund
Kirk and Doreen Blunck
Mr. and Mrs. C. Robert Brenton
Robert and Marlene Buckley
Nancy C. Caponi and Robert F. Adams
Mr. Frank Cecil
Mrs. Paula Coffey
Dr. Joe DeMarco and

Ms. Susan DeMarco
James and Barbara Demetron
Mr. Phillip J. Dorweiler
Timothy and Teresa Dunbar
Elizabeth Eddy
Catherine Elliot
Jann Freed and John Fisher
Cornel Fuerer and Bokkkyeong Suh
Rosalie Gallagher
Andrew Gangle and Katrina Guest
Dr. and Mrs. Richard Gloor
David Goldman
Tina and Jon Hade
Mr. and Mrs. Henry A. Harmon
Katherine Hauser
Lauren A. Holderness
Teresa Holton
Byron Huff and Jim Anderson
Karen Shaff and Steven Jayne
Jane and Jeff Johannesen
Mary Josten
Ric and Carol Jurgens
Lawrence Kirsner
Linda and Tom Koehn
Dr. and Mrs. Keith Krell
Michael Kuehner
The Laurie Kuestner Family
Steve and Alison Lang
Elizabeth Ballantine and Paul Leavitt
Frederick and Joyce Lock
Linda Godwin and Tom Lynner
Mary Lou and Gerard Neugent
Rick and Elizabeth Neumann
Andrew and Barbara Nish
Ellen O'Neil-Harris
Katherine Patton
Dr. Nancy Peters
Mr. and Mrs. Donald Pink
Kent and Virginia Porter
Dana and Scott Quick-Naig
Cindy and Richard Raabe
Sue and Alvin Ravenscroft
Peter and Rita Reed
Dianne Riley
Dr. Harlan and Mrs. Audrey Rosenberg
Kent and Janice Rosenberg
Steven Rosenberg
Mr. David Safris and Mrs. Karen Safris
Suzanne and Gary Shapiro
Bruce and Barbara Sherman
Mark and Mary Ellen Stanley
UBS Financial Services
Michael Wallace
Alice Walton
Mark and Karrie Weinhardt
Wellmark Blue Cross and Blue Shield
Leigh Wichern

\$100 – 499

Erica Abell-Holland and Brent Holland
Mechile and Charles Adams
Liz and David Adelman
Will Aeschliman and Joshua Signs
C.J. and Sara Alexander
Mary Alice and Gary Amerman
Dennis Andersen
Allyson Anderson
Amy Anderson and Mark Hill
Beverly and Bruce Anderson
Chad and Melissa Anderson
Christine Paulson and Kevin Armstrong
The Arnold Family
Angie Arthur
Jim Asklof and
Stephanie Furstenau Asklof
Betty Augspurger

Douglas Aupperle and Tom Chase
Kelli and Bruce Baker
Joshua Baker and Jessica Terrill
Jeff Baldus
Christine Conyers and Thomas Baldwin
Nancy Barnett
Barton Solvents, Inc.
Jean Ann Basinger
Sally and Dennis Bates
Mr. Rex Batson
Wayne and Delores Bauman
Lisa and Andrew Bean
Mary Ann Beard
Robert and Lois Beh
Mary Beh
Vince and Roberta Bejarano
Jane and James Bell
Mrs. Christine Bening
Sherry Bergerson
Lydia and Greg Berry
Kodi Beverlin
Karla Killinger and Scott Blacketer
Beverly and David Blaha
Kari and CJ Blenert
Mr. and Mrs. Darrel Blunck
Martha Boesenberg
Nancy Bone
Margaret and Arden Borgen
Inez and Quentin Boyken
Jane and Ted Brackett and Family
Tony Braida and Mark Babcock
Donald and Patricia Brandt
Karen Massetti Miller and Bill Brauch
Bill and Pamela Braune
Scott and Elizabeth Brennan
Laurine and David Briden
Neil and Anne Broderick
Shelley and Martin Brody
Joan and Curt Broek
Constance and Doug Brooker
Kelly and Chad Brown
Claudia and Christopher Brown
Susan and David Brown
Donald and Barbara Brown
Joanne Brown
Nancy Brown
Robert T. Brown
Jordan Brownlee
Roger and Barbara Bruene
Julie and John Bruntz
Phillip and Rebecca Bryant
Robert and Anne Buck
Stewart and Mary Buck
Edward Buckingham
Ms. Lois J. Bullinga
Diana L. Bunten
Chris Burch
Mr. and Ms. Jerry Burgess
Joan Burke
Don and Pam Burkhead
Mary Ellen and Frederick Burr
Lauren and Mike Burt
Suzie Glazer Burt and Gregory Burt
Matthew and Betsy Busick
Eric A. Butler
Matt and Melissa Butler
Dottie and Bob Butts
Lori Calhoun
Crom and Mary Campbell
Thomas and Barbara Carlstrom
Lyle and Glenda Carpenter
Phyllis Carpenter
Linda and Robert Carpenter
Sondra Carter and Richard Free
Tamara Carter
Simon and Patricia Casady

Mary Jane Cassady and Ronald Smith
Jody Caswell and Julie Ingersoll
Dr. Roger I. and Kimberly Ceilley
Joe and Pat Cerne
Heidi Cessford Krabbe
Sandy and Jim Champion
Joyce and Richard Chapman
Cyndi Chen
John and Lori Chesser
Teresa and James Choi
Jake Christensen and Susan Fitzsimmons
Abby and Jeff Chungath
Barbara Church
Ellen L. Cioccio
Marian and Bob Clark
Katie Roth and Mark Clark
Rose and Summer Clark
Sarah Clark and John Thomas
Logan Clement and Courtney Grotenhuis
Ryan Clutter and Vicki Sehgal
Katy and Richard Cohan
Maurice and Patricia Cohen
Ric Collier and Aden Ross
Christine and Edward Collinet
Jordan and Tiffany Collins
Katherine Minks and Steven Combs
Christine and J. Brendan Comito
Mr. and Mrs. Joseph M. Comito
Amariah Williams and Carrie Condon
Joe and Mary Consamus
Sue and Elle Conyers
Christa and Josh Cook
Brian and Janice Cooney
Mollie and Kevin Cooney
Cyndy and Joe Coppola
Ms. Joy Corning
Ellen and Charles Corwin
William and Marilyn Corwin
Jeffrey Couch
Christine and Drew Cownie
Mike and Peggy Coyne
Holly Craiger
Karen Creager and Steve Barker
Jill Creveling
Gary Cromer and Judy Porter
Ruby C. Cureg
Diane Cuttell
Mr. and Mrs. David Dahlquist
Nancy and Guy Danielson
Dr. Peter Daniolos and
Dr. Raynard S. Kington
Johnny and Teresa Danos
Jon Darsee
Lisa Stange and Jon Davidson
Donna Davilla
Ronda and Michael Davis
Patricia Davis
Marilyn and Stanley Davis
Charles Day
Kristian Day
Daniel and Marilyn Deavers
Patrick and Mardi Deluhery
Des Moines Golf & Country Club
Tom DeTaeye
Jacquelyn and Donner Dewdney
Rebekah and Louis DeWild
Jane E. DeWitt
Heather and Mark Dickinson
Elizabeth Dixon
Lesley Wright and Donald Doe
Jon and Mary Doidge
Mark and Julia Doll
John and Lettie Domini
Patricia Donhowe
Andrew and Isabel Doria
Patricia and Doug Dornacker

2015 WAS A MEMORABLE YEAR FOR FUNDRAISING THANKS TO THE ART CENTER'S GENEROUS DONORS.

\$100,000+

21st Century Endowment
Pamela Bass-Bookey and Harry Bookey
Bravo Greater Des Moines
James D. Edmundson Foundation
Hands On, Des Moines Endowment
Kyle J. and Sharon Krause
Anna K. Meredith Endowment Trust
Toni and Timothy Urban

DuPont Pioneer
Ellen and Jim Hubbell
John and Penny Krantz
Jeanne and Richard Levitt
Maddie Levitt
J. Locke and Harriet S. Macomber
Mid Meredith Zuendel Endowment Fund
Nationwide Foundation
The Principal Financial Group

\$50,000 – 99,999

John and Mary Pappajohn
The Wallace Foundation Endowment

\$15,000 – 24,999

Iowa Arts Council, a Division of the Iowa
Department of Cultural Affairs
National Endowment for the Arts
Craig and Kimberly Shadur

\$25,000 – 49,999

Meier Bernstein Foundation
Jacqueline and Myron Blank
Exhibition Fund
Jacqueline N. Blank Fund for
Museum Education
The Bright Foundation
W. T. and Edna M. Dahl Trust

\$10,000 – 14,999

Julia and Woodward Brenton
Mary and Doug Bruce
Melva Bucksbaum and Raymond Learsy
The Cowles Charitable Trust
Patty and Jim Cownie Charitable Fund
The Hinson Family Foundation

Ann and Thomas Dorr
 Brett Douglas and Erin Olson-Douglas
 Robert and Pamela Douglas
 Kay Carpenter Doyle
 Catherine Dreiss and Jeffrey Thompson
 Cindy O'Connell and Rick Dressler
 Julie and Tom Drew
 Josh Dreyer
 Patricia and Stephen Dryden
 Sherry Levine and Stan Dudley
 Nancy and Art Dunbar
 Randy and Paula Duncan
 Jon Duvick and Carol Hendrick
 Selma Duvick
 Stephanie and Samuel Early
 Kathy and Jay Eaton
 Mr. Cody Edwards and
 Dr. Ashley Edwards
 Beth Ann and John Edwards
 Marjorie Edwards and
 James Edwards, Jr.
 Cecilia and Wes Ehrecke
 Roy and Averyle Ehrle
 Kristi and James Eiler
 Susan Ekstrom and Max Burkey
 Elements, Ltd.
 Ms. Beverly Ellis
 Mr. and Ms. Todd Elwein
 Mrs. Charlotte Elmets
 Bennett and Leisa Ely
 Karen and Arnold Engman
 Stanley and Shari Engman
 Priscilla Eppinger
 Gene and Ann Erb
 James and Betty Erickson
 John Erpelding
 Louise Esveld
 Diane Evans
 Janet and J. Scott Evans
 Stephen Exel
 Katherine Fanter
 Patricia Fasbender
 Lea Featherstone
 Jillene and James Ferguson
 Jonathan Fialkov, M.D. and
 Mrs. Jill Fialkov
 Martha and Jim Fifield
 Robert and Diane Findlay
 Dr. John Fingert
 Richard and Elizabeth Fisher
 Mr. Oliver G. Fleming
 Andrew Flynn and Linda Shevlin
 Stephen and Ann Forney
 Shirley Foster
 Teresa McMahon and Garth Frable
 Ric and Susan Frambach
 Joe Freund and Nicholas Roth
 Dr. Carole A. Frier
 Barbara Royal and Deidre Fudge
 Gannett Foundation
 Dr. Corrine and Dr. J.G. Ganske
 Judith Garber
 Sarah Gardner and Thomas Frolick
 Jennifer Garst and Steve Libbey
 Kate Garst and Leland Searles
 Dr. Sarah Garst
 Jon and Sara Gaskell
 Mr. and Ms. Nolden L. Gentry
 Thomas and Katherine Geraty
 Michael and Ann Gersie
 Pat Gessman
 Jean A. Gifford and D. Craig Gifford
 Olena and Ryan Gilbert
 John Gilgun
 Dr. Harvey Giller and
 Mrs. Barbara Hirsch-Giller

E.J. Giovannetti
 Walt and Sandra Githens
 Cheryl and Michael Giudicessi
 Stanly and Regina Glawe
 Dr. and Mrs. Larry Goetz
 Sharon Louis-Goldford and
 Dennis Goldford
 Cathy and Thomas Goldman
 Mr. and Mrs. Richard Goodson, Jr.
 Ms. Judith Goodwin
 Carolyn Gordon
 Marcene and Carl Grant, Jr.
 Greater Naples Leadership, Inc.
 Dr. Don C. Green and Mrs. Bonnie Green
 Mathew Greiner
 Linda and David Grieve
 Dennis Groenenboom and
 Scott Hartsook
 Karl Ann and Barbara Gwiasda
 Deb and Joel Hade
 Julie and Jason Hahn
 Wael Haidar and Sarah McAvoy
 Mr. and Mrs. Ron Hallenbeck
 Khanh and Neil Hamilton
 Kathryn and Randall Hamilton
 James and Terry Hammer
 Joie Hand and William Fischer
 Karen Hanisch
 Kelly and Brad Hanken
 David and Dawn Hanson
 Joseph Hanson
 Jennifer and Ron Hanson
 Dennis Hanssen and Patricia Chong
 Rick and Mary Harper
 Harvey Harrison and Ellen Taylor
 Christine Hartoft
 Matthew and Hayley Harvey
 Andrea Hauer and David Perret
 Cora Curtis Hayes
 Chelsea and Eric Hayes
 Annette and Casey Head
 Diane and Michael Heid
 Mr. and Mrs. Douglas H. Hein
 Susan Breen-Held and Steven Held
 Kate Henry
 Christine and Steve Hensley
 Victoria Herring and Mark McCormick
 Harriet and Duane Leitch
 Steven and Karen Herwig
 Judy Hines and Shelley Mossberg
 Christine and Terry Hines
 Harry and Starr Hinrichs
 The Michael S. Hipp Family
 Mrs. Martha Hippee
 Harlan and Dorothy Hockenberg
 Bertel Lewis
 Diane and Anna Hoffman
 Rebecca and Alan Hoisington
 Denise and Alan Holck
 Gerald and Rosemary Holland
 Sharon and Bob Holz, Jr.
 Connie and Stan Honken
 Ms. Kristine Houston
 James and Nicole Howard
 Elizabeth and Stephen Howell
 Darla and G.A. Hulse
 Jeffrey Hunter and Janet Griffin
 Marcia and Michael Hunter
 Alan and Denise Hutchison
 Christine and Tim Ihrig
 Annette Isaacson
 Carl and Joan Jackson
 Joanne Stevens and Thomas Jackson
 Ramin and Donya Jahromi
 Michelle McGovern and Jack Janda
 Ryan Jennings
 Andrea Jensen

Kerri and Dan Johannsen
 Barbara A. John
 Lyn Isaacson and Mark Johnson
 Ms. Mikel J. Johnson
 Marion and Paul Johnson
 Thomasine and Stephan Johnson
 Dianne and Robert Jones
 Todd Jones
 David and Gerianne Jordan
 Kerry Jordan
 Ms. Margaret J. Junkhan
 Larassa Kabel
 Murray and Fannie Kalis
 Leonard Kallio and Carolyn Levine
 Marie-Louise and Mark Kane
 Howard and Susan Katelman
 Sandra and Colin Kavanagh
 Ted and Stephanie Kempf
 Sally Kendrick
 Regina and Robert Kennedy
 Khalid Khan and Iman Burns-Khan
 Drs. Amy and Joe Kimball
 Mr. and Mrs. Ron Hallenbeck
 Raymond and Sara Kinley
 Mr. and Mrs. Tanner Kinzler
 Robin Kline and William Summers
 Ruth B. Klotz
 Beth and Bill Koenig
 Chamnahn Kongtahworn, M.D.
 Gail and Joe Kotval
 Jay Kozel
 Kimberly Krantz and Emery Simpson
 Kylee and Nick Krizmanic
 Jan Berg Kruse and Rod Kruse
 Evelyn Kuhns
 Dr. Gary Kummet and
 Dr. Colleen Kummet
 Nancy and Robert Landess
 Jennifer and Chuck Larson
 Paul and Sally Latta
 Steve Laudick
 Kyle Lechtenberg and Kara Ullestad
 Liz and Robert Lee
 Jennie LeGates and Fritz Wehrenberg
 Deanna R. Lehl
 Ann Lehmann
 Karen and Charles Leibold
 Doris Hertsgaard
 Peggy and Jim Leonardo
 Janet and David Leslie
 David and Barbara Lettween
 Ann Levine and Bryan McCay
 Caroline W. Levine
 Tracy Levine
 Bertel Lewis
 Diane and Calvin Lewis
 Jesse and Linda Lewis
 Elizabeth Lidgett and Nick Renkoski
 Kelli and Gracie Linnemeyer
 Edward Loeb
 Christina and Joseph Logsdon
 Brad and Lori Long
 John and Nicole Lozier
 Kaye and Richard Lozier
 Rick Lozier and Kathryn Gamble Lozier
 Kristi Lund Lozier and William Lozier
 Paul Lubetkin
 Rita and John Luther
 Jeanne and Mark Lyle
 David W. and Laura Mackaman
 Gillian Madigan
 Rosemary Mahoney
 Dr. Jeffrey T. Malik and Kylee C. Malik
 Li Zhao and Justin Mandelbaum
 Paul and Lynn Mankins
 Joan Mannheimer

The Honorable Judge Ed Mansfield
 and Elizabeth Mansfield
 Laura Mate and Brent Pattison
 James and Kara Mathis
 Kent and Sheila Mauck
 Jeanine and James Mauck
 Chandler Maxon and Robert Jones
 Kenneth McCann
 Ms. Judy McCarthy
 Bette McClelland
 Barbara and Patrick McClintock
 Christopher and Stacey McDonald
 Patrick and Claudette McDonald
 Dr. and Mrs. William L. McGinnis
 Nancy and Randy McGuire
 John and Theresa McIlhenny
 Edwin McIntosh and Jacque Fletcher
 Bruce McKee
 Robert McLearn, Jr.
 Sara McMillan
 Mike and Robin McNichols
 Emily and Mike Mead
 Diane and Elizabeth Meeson
 Harold and Marilyn Melcher
 Kathleen and Paul Melde
 Phyllis V. Blood and F. Terry Melton
 Charles Mertes
 Mr. and Mrs. Raymond A. Michel
 Ann and Brent Michelson
 MidAmerican Energy Co. Matching Gift
 Daniela Milani
 Keith and Liz Miller
 Megan and Mike Milligan
 Jami and Ben Milne
 Mike and Dianne Milobar
 James and Diana Mincks
 Jacqueline and Jerry Minor
 Albert and Evelyn Mintzer
 Cynthia Mitchell
 Joseph Mitros
 Lindsey Mollenhauer
 Elizabeth Montgomery
 Robert Montgomery
 Gloria and Paul Morris
 Brenda and Bernard Mouw
 Susan Skinner and Mark Movic
 Ann Mowery and Allan Powers
 Robert and Tracy Mullen
 Mary Muller
 Clayton and Julie Murphy
 Brian Murray and Jeff Hartman
 Marilyn Musser
 Ms. Diane Myers
 Pauline Kay Myers
 Jeff Nall
 Joe and Marla Naumann
 LaVonne Neerland and Stephen J. Voit
 Bill and Jennifer Nellans
 Staci and Michael Nevinski
 Niccum Family
 Judith and John Nicholson
 Roy and Mary Nilsen
 Paul Novak
 Jason and Carla Nunemaker
 Samuel and Sarah O'Brien
 Amy and William O'Brien
 Nancy O'Connell
 Joel and Kathy Olah
 John W. Olds, M.D. and Rosemary Olds
 Marlene and Gary Olson
 Susan J. Olson
 Martine and Nathan Olson-Daniel
 Olson-Larsen Galleries
 Eileen O'Meara
 Stephen Orr and Chad Jacobs
 Jean O'Shea

Larry and Mary Overton
 Elizabeth Owens and William Brock
 Gail and Michael Pace
 Laura Palmer and Kevin Hansen
 Elaine and Thomas Palmer
 John Paschen and
 Cynthia Oppedal Paschen
 Tyler Patterson
 Donna Paulsen and Thomas Press
 David Pearson
 Sam and Deb Peery
 Elizabeth Penniman
 Sandra Percy and Henry L. Whitfield
 Ms. Pamela M. Pertzborn
 Dr. and Mrs. Carl H. Peters
 Fred Peters
 David and Anne Marie Pflanz
 Julita and Thomas Pollard
 Rose Lee Pomerantz
 Kent and Virginia Porter
 Melanie Porter
 Sarah and Lynn Pritchard
 Diane and Joe Proctor
 Proteus Club
 Marti Puff
 Dr. Glenn B. Purnell and
 Mrs. Florence Purnell
 Dr. Jon E. Quinn
 Rosemary and Timothy Rahm
 Donald H. Raker
 Charles and Sheila Rayburn
 Beth Raymond
 Kristin and Michael Reck
 James Reese and Peggy Van Kirk
 Treva Reimer and Keith Ratzlaff
 Frederick Reindel
 Artis Reis and Mark Smith
 Dennis and Charlotte Reynolds
 Tom Rice
 Michael and Ann Richards
 Mary M. Riche
 Robert Ridgway and Jerry Purdy
 Sandra Riggs
 Wes and Karen Ritchie
 Dawn and Stephen Roberts
 Rudy and Jean Roe
 Craig Rogers and Margaret Wilcox
 Donald and Darcy Rogerson
 Joseph and Karen Romano
 Ms. Jessica Rooker
 Sol Rosenbaum
 Mark and Janet Rosenbury
 Nanette King and Thomas Ross
 Joanne and Jonathan Roth
 M. Jessica Rowe and Thomas T. Tarbox
 Mr. and Mrs. John Ruan, IV
 Brenna and Craig Rueschhoff
 Sandy and David Ruhs
 Ms. Lori Sacco
 I. Pour-El and Paul Sacks
 David and Kris Saggau
 Jenelle and James Sarcone, Jr.
 Patrice Sayre
 Claudia A. Schickler and Paul Schickler
 Steven and Cristen Schipper
 Richard and Jacqueline Schmeal
 Deb Wiley and John Schmidt
 Mr. Larry Schmidt
 Joseph Schneider
 Mr. and Ms. Robert Schoeller
 William and Karen Schoenenberger
 Russ and Diane Schrage
 Jack and Georgianne Schreiber
 Bert and Nancy Schroeder
 Mary Ellen Schulte
 Kenneth and Linda Schultheis

Mr. Ronald W. Schulz
 William E. Schuster
 Ms. Amy Scott
 David and Mary Scott
 Sara Sersland
 Nancy and Scott Shafer
 Jeannie and G.F. Sheldon
 Dane and Christina Shelton
 Gail Sheridan-Lucht and Gene Lucht
 Sarah Jane and Grayson Shimasaki
 ViVi Shirley
 Phil and Diana Sickles
 Judith and John Siembieda
 Charles Silet
 Kathleen and James Simmons
 Dr. Dana and Ronit Simon
 Linda Simonton
 Cathleen Simpson
 Rose Lee Pomerantz
 Robert and Hannah Singer
 Dawn and Manuel Siprut
 Lauren Sitarz
 Ms. Patricia Skeffington
 Patty and Dan Skokan
 Sue Slater
 Ms. Michele Slawson
 Dennis and Paula Smith
 Ms. Kay Smith and Elliott Smith
 Gail and Ginger Smith
 Lorna J. Smith
 Rhonda Smith
 Scott and Jeanne Smith
 Heather Snyder
 Maryanne and Robert Sobiech
 John Sodak
 James H. Sommers
 Dale and Barbara Sorensen
 Jill Southworth
 Neal Spence and Suning-Cao
 Jim Spevak
 Tiffany Spinner and John Spinner
 Judy Quick and James Spooner
 Tori Squires
 Dr. Lawrence Staples and
 Mrs. Marilyn Staples
 Carol Stayner
 Michael and Simma Stein
 Shirley M. Stetson and Roger F. Stetson
 Hannah and Scott Steuben
 Sarah Steward and Jeff Bruning
 Nancy and William Steward
 Pamyla and Clarke Stewart
 Roger and Carolyn Stirler
 Susan Stocum
 Pat and Scott Stouffer
 Sandra Strong
 Jayne A. Sullivan
 J. M. Sullivan
 Sriram Sundararajan
 Nancy and Keith Swanson
 Mathilde Brown Swanson and
 Richard Swanson
 Ms. Vivian J. Swanson
 Thomas Swartwood and Terri Combs
 Joyce and Benjamin Swartz
 David and Denise Swartz
 Laura and Michael Sweet
 Dianne and David Swieskowski
 Dr. Kenneth and Mrs. Cathy Talcott
 Sandra and Robert Tatge
 Dawn Taylor
 John R. Taylor
 Mr. Larry Taylor
 Susan Taylor
 Chuck and Sylvia Terlouw
 Mary and Mike Thilges

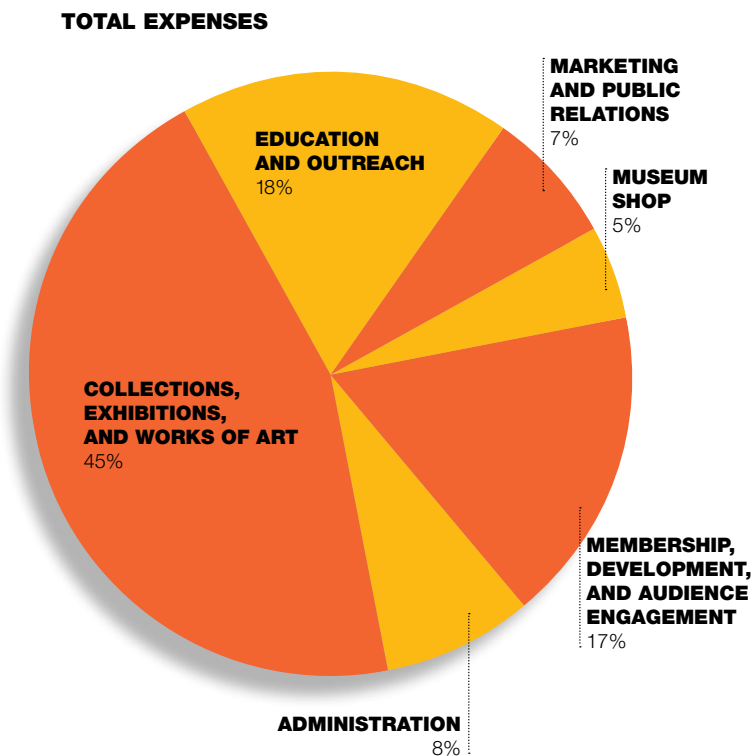
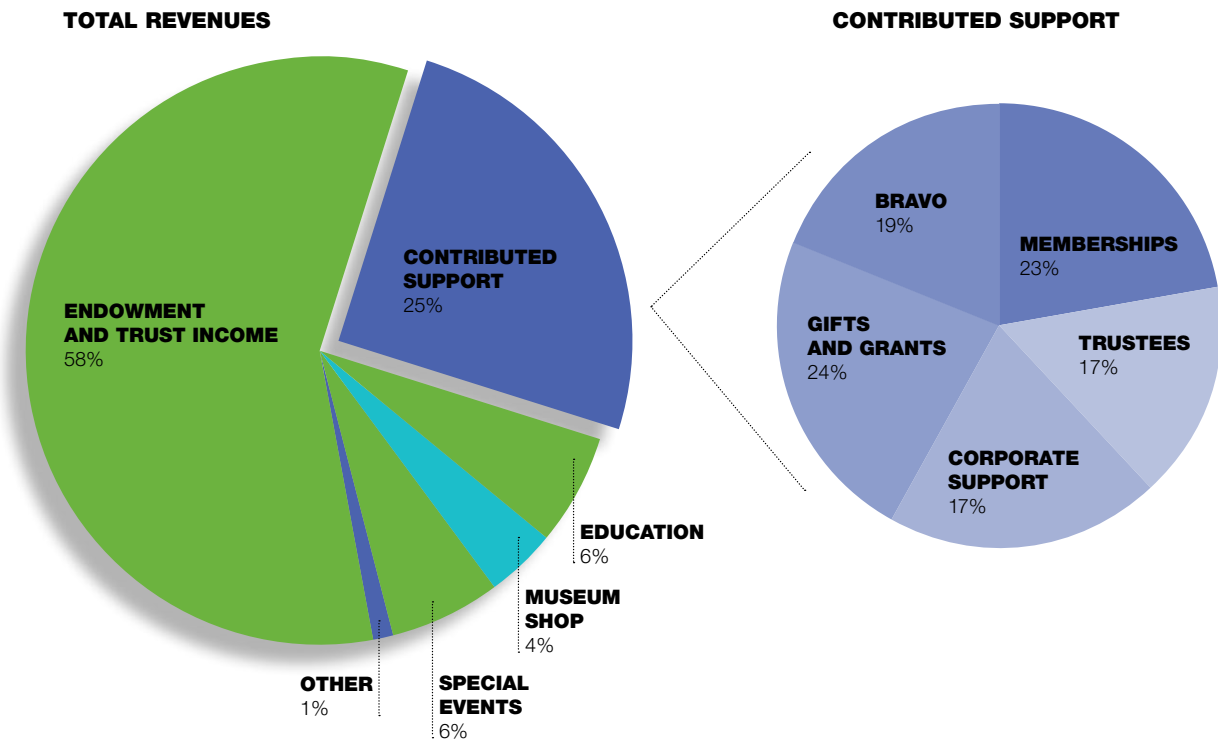
Charles Thompson
 Johanna and Brian Tollas
 John W. Tone
 Mary Pearsall Torgoman
 Jenny and Rod Townsend
 Virginia Traxler and Wes Graham
 Ms. Leann M. Treloar and
 Scott Galenbeck
 Beth Triebel
 Rick and Kelsey Trower
 Lee and Melinda Turnbull
 Eileen and Paul Tyler
 Patricia and Gary Van Dyke
 Shirley Van Zante
 Elsie Vandegrift
 Roberta Vann and Fred O. Lorenz
 Lisa Veach
 Molly and Robert Veenstra
 Dragana Kostic Veneziano and
 Louis Veneziano
 Adele and Dirk Ver Steeg
 Dr. and Mrs. Michael Versackas
 Carole and Bob Vipond
 Voelker Family
 Kim and Barry Von Ahsen
 Susan and Carl Voss
 Zac and Sarah Voss
 Myra and Gerry Waggenspack
 Werner Koln and Dr. Murphy Waggoner
 Marvin and Marie Walker
 Walter J. and Sally K. Walsh
 Hal and Jan Walter
 Anne and William Waskom
 Anne and Ivan Webber
 Duane and Mary Rose Weiland
 Rita and Harvey Weinberg
 Mr. Daniel Weiss
 Steve and Linda Weitz
 The Wellmark Foundation
 Matching Gifts Program
 Sarah and Douglas Wells
 Jamie Murphy and Eric West
 Kathleen and James West
 Patricia and Paul Westphal
 John and Joan Wetherell
 Jeanne White and David Sempel
 Toni and Bill Whitman
 Malinda Wiesner
 Dolores A. Willemssen
 Robert and Jean Williams
 Beth Wilson
 Jean and George Wilson
 Ms. Annabel Wimer
 Sandra and James Windsor, III
 Marvin and Robbie Winick
 Art and Sue Wittmack
 Ms. P.D. Jenison and Mr. Irving Wolfe
 Molly Wood
 Paul Woodard
 James C. Work
 Karen and Sumner Worth
 Amy and Thomas Worthen
 Fredda Wright
 Gerald Wurtz and Marilyn Dysart
 Jon Yankey
 Mary and Kerald Yearns
 Warren Young
 Terry Zeimetz
 Jenny Graham Zimmerman
 and Dan Zimmerman
 Kent Zimmerman
 April Zingler
 Jane and Roger Zobel

EDMUNDSON HONOR SOCIETY MEMBERS Established 2012
 Anonymous (2)
 Emily Bahnsen
 Linda Bisignano
 John Brady Foundation
 Margaret Brennan
 Richard L. Deming, M.D.
 Ms. Doris M. Eby
 Mary Gottschalk
 David Hurd
 Madelyn Lynn
 Patricia J. McFarland
 Linda and Michael Menth
 Mr. and Mrs. Gregg R. Narber
 Ms. Peggy A. Patrick
 Anastasia Polydorán
 Mickey Ryan
 Pat and Louis Schneider
 William E. Schuster
 Kimberly and Craig Shadur
 Keith Shaver
 The Vernon Company
 Willa Wenzl
 M.C. Wijkman Glickman Fund

IN KIND SUPPORT
 Big Green Umbrella Media
 Boesen the Florist
 Connie Wilson Design
 The Des Moines Register
 iHeartMedia
 Iowa Public Radio
 Vincent and Gail Valdez

OPERATING REVENUES AND SUPPORT

The Des Moines Art Center is a 501(c)(3) non-profit organization whose mission is to engage diverse local and international audiences with the art of today through its museum and school, adding to the cultural record through collections and programs.



2015 FINANCIAL SUMMARY

Operating Revenues and Support	\$6 million
Total Assets	\$110 million
Total Net Assets	\$109 million

2015 ATTENDANCE

Des Moines Art Center	112,962
John and Mary Pappajohn Sculpture Park	37,944
Subtotal	150,906
Des Moines Arts Festival	268,000
Total Attendance	418,906

BOARD OF TRUSTEES 2015

OFFICERS

- Kyle Krause
PRESIDENT
- Patricia McFarland
VICE PRESIDENT
- Toni Urban
SECOND VICE PRESIDENT
- Stacy Polydorán
SECRETARY
- James Wallace
TREASURER
- James Hubbell, III
CHAIRPERSON & EX-OFFICIO

BOARD

- Pamela Bass-Bookey
- Julie Brenton
- Joseph H. Ceryanec
- Graham Cook
- Lois Fingerman
- Christine Hensley
- Bruce Hughes
- James Israel
- Dale Jansen
- Darren Jirsa
- Mary Kelly
- John Krantz
- Lisa Kruidenier
- Jeanne Levitt
- Warren May
- Mike Miller
- Mary Pappajohn
- Suku Radia*
- Pat Schneider
- Craig Shadur
- Mike Simonson
- Dennis E. Young

*AT LARGE MEMBER OF THE EXECUTIVE COMMITTEE

HONORARY TRUSTEES

- Mertze Anderson
- Kirk V. Blunck
- Woodward G. Brenton
- Melva Bucksbaum
- Robert Burnett
- Elaine Estes
- Louis Fingerman
- Mell Meredith Frazier
- Johnnie Friedman
- Barbara Gartner
- Elise Shuler Geraghty
- Michele Griswell
- Charles S. Johnson
- Lana Jones-Gould
- Richard S. Levitt
- Harriet Macomber
- Marvin E. Mazie
- Tom Meredith
- Judith Milligan
- Nancy Powell Montgomery
- Gregg Narber
- John Pappajohn
- Katie Peverill
- Cynthia Rehm
- Gail Richards
- Lucia R. Riddle
- Lou Schneider
- Mary Seidler
- Gaylord Torrence
- Thomas N. Urban
- Timothy J. Urban
- William F. Vernon
- Fred Weitz

STAFF

ADMINISTRATION

- Jeff Fleming
EXECUTIVE DIRECTOR
- Sue Lundstrom
EXECUTIVE ASSISTANT

AUDIENCE ENGAGEMENT

- Christine Doolittle
DIRECTOR OF MARKETING AND PUBLIC RELATIONS
- Megan Bannister
SOCIAL MEDIA MANAGER
- Barbara Briggie-Smith
DEVELOPMENT AND COMMUNICATIONS ASSOCIATE
- Debra Kurtz
DIRECTOR OF EVENTS
- Cathy Williams
FACILITY RENTAL MANAGER
- Theresa McIlhenny
Inta Garrett
Sharyl Smith
VISITOR SERVICES ASSISTANTS

BUILDING & GROUNDS

- Don Burkhead
ENVIRONMENTAL SERVICES DIRECTOR
- Kurt Nicholson
FACILITIES MANAGER
- Kevin Brown
- Brian Evans
- Joey Hanlin
- Gene Swan
MAINTENANCE STAFF

FINANCE

- Cheryl Tuttle
SENIOR DIRECTOR OF FINANCE
- Janet Weeden
ACCOUNTANT/BENEFITS ADMINISTRATOR

CURATORIAL

- Laura Burkhalter
CURATOR
- Amy N. Worthen
CURATOR OF PRINTS AND DRAWINGS

EDUCATION

- Jill Featherstone
DIRECTOR OF EDUCATION
- Tracy Duran
STUDIO EDUCATION AND OUTREACH MANAGER
- Haley Babcock
STUDIO EDUCATION COORDINATOR
- Diane Collett
STUDIO EDUCATION AND VISITOR SERVICES ASSISTANT
- Michael Lane
STUDIO EDUCATION COMMUNITY COORDINATOR
- Megen O'Toole
MUSEUM EDUCATION ASSISTANT
- Dara Saunders
STUDIO EDUCATION ASSOCIATE

INFORMATION TECHNOLOGY

- Robert Reeves
SYSTEMS ADMINISTRATOR

INSTALLATIONS

- Jay Ewart
CHIEF PREPARATOR
- Mindy Meinders
ASSOCIATE PREPARATOR
- Jeff Ashe
Brad Ball
INSTALLATION TECHNICIANS

MEMBERSHIP & DEVELOPMENT

- Emily Bahnsen
DEVELOPMENT DIRECTOR
- Staci Harper Bennett
VISITOR SERVICES SUPERVISOR
- Jerrod Jordahl
GRANTS ASSOCIATE
- Julia Mason Gray
MEMBERSHIP AND VISITOR SERVICES MANAGER
- Leslie Onthank
MEMBERSHIP AND DATABASE ADMINISTRATOR

MUSEUM SHOP

- Sarah Jane Shimasaki
RETAIL OPERATIONS DIRECTOR
- Ellen O'Neil Harris
LEAD SALES ASSOCIATE
- Hannah Borge
Mary Lou Grotewold
Laura Palmer
SALES ASSOCIATES

PROTECTION SERVICES

- Mike O'Neal
PROTECTION SERVICES DIRECTOR
- Myron Anderson
SECURITY OPERATOR
- Andy McDonald
CHIEF GUARD
- Vincent Bejarano
- Rollie Bramhall
- Ralph Briggs
- Ted Brubaker
- Walt Brumbelow
- Andy Buch
- Milton Bunce Jr
- Michael Davenport
- William Dawe
- Tom Dodge
- Thomas Dolezal
- Trudy Dolezal
- Rhonda Fingerman
- Vance Fischer
- Donald Gage
- Eileen Gloor
- Christopher Haines
- Claudia Cole Meek
- Dianne Melton
- Ernest Moore
- Isaac Shella-Stevens
- Mark Swisher
- David Thrasher
SECURITY GUARDS

REGISTRATION

- Mickey Koch
CHIEF REGISTRAR
- Megan Cohen
ASSISTANT REGISTRAR/CURATORIAL ASSISTANT
- Sydney Royal-Welch
ASSISTANT REGISTRAR/CURATORIAL ASSISTANT



Non-Profit
U.S. Postage
PAID
Des Moines, IA
Permit No. 2881

entirelyunexpected



EDMUNDSON ART FOUNDATION, INC.
4700 GRAND AVENUE
DES MOINES, IOWA 50312
515.277.4405
www.desmoinesartcenter.org

The Art Center's first community curated exhibition, *It's Your Choice*, opened in conjunction with the Art Center's 2015 gala: *Celebrating the He(art) of the Community*. With participation from *The Des Moines Register*, the Art Center invited the community to vote on their favorite works of art from a 150 rarely-seen works in the permanent collections. The top 36 pieces from more than 7,000 votes were chosen and the resulting exhibition opened to a community-wide crowd of 250, many of whom proudly wore their I VOTED buttons. The aim of this project was three-fold: to heighten awareness, foster participation, and grow public ownership of the Art Center and the permanent collections.

It's Your Choice exhibition

FRONT COVER Artwork created by Creativity Days participant (see page 11)

