


CHALLENGE COMMITMENT COMMUNITY

2020 ANNUAL REPORT





EVERY
VOICE
BELONGS
IN
CONTEMPORARY
ART.

A MESSAGE FROM THE DIRECTOR AND BOARD PRESIDENT

To say that 2020 was an unusual year would be an understatement.

Among the many challenges that confronted our museum and school was the COVID-19 pandemic and its resulting financial ramifications. Additionally, many social justice issues confronted our community and the country. The pandemic forced the institution to close to the public on March 17, only to reopen with safety precautions in place for visitors as well as staff on July 7. During the first half of the year, we addressed five overriding challenges:

- To model financial scenarios for the future
- Engage and maintain the involvement of our members and patrons through communication and information sharing
- Connect with and inspire audiences in innovative ways
- Monitor and maintain the security of our facility, its systems, and our art
- Prepare for the reopening via visitor services, programs, and exhibitions

We were successful in these efforts, even though it sometimes meant making hard financial decisions. We pivoted to new ways of operating, including the creation of virtual gallery tours, classes, and member group programs. Our docents found new ways to continue their educational work with Zoom tours and discussions.

The social justice issues that consumed our community during 2020 caused all of us to reevaluate the past and the present and to reconsider how we function. In response, the Art Center created an inclusion statement to solidify our future efforts. It reads, “Every voice belongs in contemporary art. The Des Moines Art Center commits to value and represent the unique experiences and perspectives of every visitor and staff member. Working toward equity and inclusivity within the museum, school, and community strengthens our ability to create better, together.” We acknowledge the immensity of the challenge of fighting the systematic barriers to inclusion that exist, and are committed to continued steps forward in the fight for equity for all.

The exhibition and book, *Black Stories*, took a step toward transforming the way we traditionally operate. Although planned in the spring of 2019, *Black Stories* proved to be a timely mechanism to form a collaboration with the community and to invite new partnerships. This effort marked a fundamental change in how the Art Center operates and moves us toward a more inclusive future.

Through all these challenges we remain thankful to our donors and multiple audiences. We could not maintain our role in the community without donor support. Thanks for sticking with us through 2020. We will come out of this stronger, better, and more in touch with our community, ready to face the future together.

Jeff Fleming
DIRECTOR

Graham Cook
PRESIDENT, BOARD OF TRUSTEES

The Art Center's new inclusion statement was introduced larger than life, projected on the outside of the Richard Meier building during a free community event on the front lawn on September 24.

In 2020, the Art Center presented major exhibitions that demonstrated a commitment to inclusion, while also being responsive to the upheavals and uncertainty that marked the year.

Karla Black: 20 Years showcased the artist's unconventional use of materials. When it became clear the exhibition itself would be unconventional due to the closure of the museum in response to the COVID-19 pandemic, the Art Center quickly introduced new virtual tours so that visitors could continue to interact with the works. Following ***Karla Black***, two permanent collection exhibitions highlighted the diverse works in the Art Center's holdings, while also speaking to prevailing social issues. ***Black Stories*** presented an opportunity for audience members to share their personal stories and experiences in response to the artworks in the show, allowing for a time of reflection and re-evaluation.

All exhibitions were organized by the Des Moines Art Center.

Hedda Sterne: Imagination and Machine

January 10 – April 15, 2020
Blank One Gallery

Romanian-born artist Hedda Sterne was commissioned to create impressions of John Deere tractor parts by *Fortune* magazine in 1961. This exhibition marked the first time all seven paintings have been shown together outside Moline, Illinois.

Anna Gaskell: Judith Loves Martha

January 17 – May 17, 2020
Pamela Bass-Bookey and Harry Bookey Gallery

In this film, Iowa-born artist Anna Gaskell speaks with abstract painter Judith Godwin (born 1930) about her relationship with dance pioneer Martha Graham. Funny, romantic, and personal, this film celebrates the memories of one extraordinary woman speaking about another and emphasizes the importance of recording women's stories.

Karla Black: 20 Years

February 8, 2020 – May 17, 2020

Anna K. Meredith Gallery, Upper I.M. Pei Gallery,
and Lower I.M. Pei Gallery

Karla Black: 20 Years at the Des Moines Art Center was the artist's first major solo museum exhibition to include both site-specific works and a representative selection of sculptures made over the course of her career. Karla Black creates large sculptural forms using ordinary, but unconventional materials in a pastel color palette, allowing her to investigate play, tactility, and creative expression.

Researchers:
Women Artists Inspired by Science

February 14 – May 10, 2020
John Brady Print Gallery

Researchers: Women Artists Inspired by Science
explored the influence of various sciences on the work of women artists from the 17th century forward. These artists used research into biology, physics, engineering, astronomy, and other fields as fertile ground for aesthetic inspiration.

Landscapes in Watercolor

July 7, 2020 – January 3, 2021
John Brady Print Gallery

Landscapes in Watercolor showcased over thirty works from the Des Moines Art Center's collections and considered how artists have utilized watercolor to depict the natural world. Ranging in date from 1885 to 1980, the artworks featured rocky seashores, wooded forests, grasslands, and farmlands that have been produced from meticulous marks, broad brushstrokes, or methods in between.

Karla Black: 20 Years mesmerized visitors young and old with the artist's use of unusual materials unexpectedly installed throughout the museum galleries, shown here in the I. M. Pei building.



From *Hedda Sterne: Imagination and Machine*
Hedda Sterne (American, born Romania, 1910 – 2011)
Six Cylinder Engine, 1961
Oil, spray paint, and oil stick on canvas / 34 x 26 inches (framed)
Image courtesy of John Deere



From *Researchers: Women Artists Inspired by Science*
 Mary Mattingly (American, born 1978)
Over and Over and, 2018
 Chromogenic dye coupler print
 Des Moines Art Center Permanent Collections; Gift of Mary Mattingly, 2018.14





Black Stories installation in Anna K. Meredith Gallery.
Photo: Rick Lozier



From *Selections from the Permanent Collections*
Andy Warhol American, 1928–1987
FLOWERS (BLACK AND WHITE) ca.1965
Silkscreen ink and synthetic polymer paint on canvas
Des Moines Art Center Permanent Collections;
Gift of Roy Halston Frowick, New York, 1986.42

Selections from the Permanent Collections

July 7–September 8, 2021

Anna K. Meredith Gallery

To welcome visitors back into the museum, staff selected a mix of old favorites and exciting newcomers to fill the Meredith gallery.

Black Stories

October 3, 2020 – January 17, 2021

Anna K. Meredith Gallery, Upper I.M. Pei Gallery, and Lower I.M. Pei Gallery

Co-curated by artists Mitchell Squire and Jordan Weber

Black Stories presented artwork by Black artists in the Art Center's permanent collections and aimed to connect and partner with the community in the process. The exhibition was organized into four sections: *In Living Color*, *In Black and White*, *In Wakanda*, and a shrine room showcasing traditional African works.

Iowa Artists 2020: Rachel Cox

October 16, 2020 – January 10, 2021

Blank One Gallery

Photographs from Rachel Cox's "Mors Scena" series explored how the décor of funeral homes function within the grieving process. The artist conducted research to not only capture these unique spaces but also delve into how notions of class and social expectation all play in role in how such places come to look and feel. The resulting photos are part documentary, part formal exploration, and part arranged fiction.

To advance the Art Center’s goal of celebrating and expanding the diversity of the collections, the museum accessioned 47 works of art in 2020 by artists from diverse backgrounds.

Many of these works are from artists new to the Art Center’s collections. Purchases included major works of photography, mixed-media, prints and drawings, and works on paper. The following represents a selection of these works. Acquisition and endowment funds, the Des Moines Art Center Print Club, and gifts from generous donors made these accessions possible.

1 | HENRY TAYLOR (American, born 1958)
Portrait of Oscar Murillo 2019
Acrylic on canvas
45 3/4 x 35 1/4 x 1 inches
Harriet S. and J. Locke Macomber Des Moines Art Center Endowment Fund, 2020.1

2 | HEDDA STERNE
(American, born Romania, 1910–2011)
Anthropograph #19 1949
Oil on linen
41 1/4 x 31 1/4 x 2 inches
40 x 30 inches
Des Moines Art Center Permanent Collections;
Purchased with funds from the Edmundson Art Foundation, Inc., 2020.2

3 | LUIS GISPERT (American, born 1972)
Jimmy Page 2015
Polychrome stone, gold chains
60 1/2 x 49 1/4 inches
Des Moines Art Center Permanent Collections;
Gift of Robert Feldman, 2020.4

All accessions photos by Rich Sanders unless otherwise noted

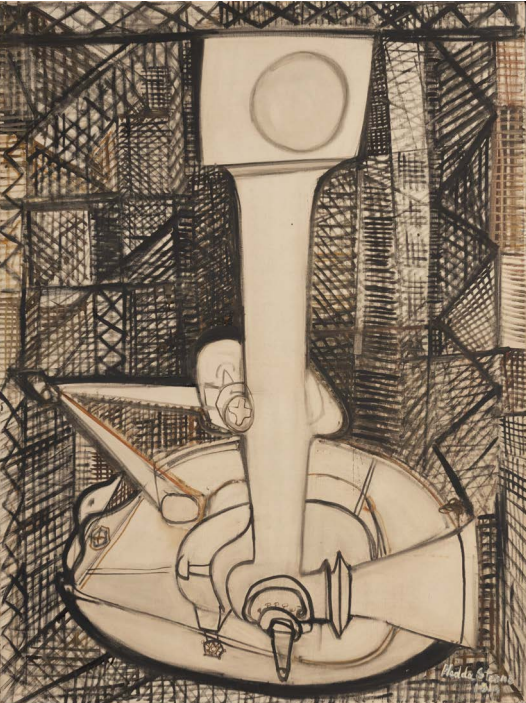
4 | YAN PEI-MING (Chinese, active France, born 1960)
Self-Portrait 2007
Lithograph on paper
29 7/8 x 22 inches
Des Moines Art Center Permanent Collections;
Gift of Jim and Ellen Hubbell, 2020.6

LEONOR FINI (French, born Argentina, 1908–1996)
N’AS110 “Tu verras si nous sommes difficiles”
1940–1950
Ink on paper
8 x 6 inches
Des Moines Art Center Permanent Collections;
Gift of Jim and Ellen Hubbell, 2020.8

FRANK BIG BEAR (American, Anishinabe, born 1953)
Multiverse: Spin Off VI 2013
Collage on found paper
Frame: 36 x 36 x 1 3/4 inches
Other (collage, each): 8 1/2 x 6 inches
Des Moines Art Center Permanent Collections;
Gift of Jim and Ellen Hubbell, 2020.10.a–l

ELIZABETH MURRAY (American, 1940–2007)
Radish 2001
13 color lithograph and screenprint on hand-cut paper
Overall (plexi box): 24 1/8 x 26 1/4 x 6 inches
Des Moines Art Center Permanent Collections;
Gift of Jim and Ellen Hubbell, 2020.13

HANS BELLMER (German, 1902–1975)
Les Infortunes de la Vertu, from the portfolio
“Petit Traité de Morale,” 1968
Etching on paper
15 x 11 1/8 inches
Des Moines Art Center Permanent Collections;
Gift of Jim and Ellen Hubbell, 2020.18

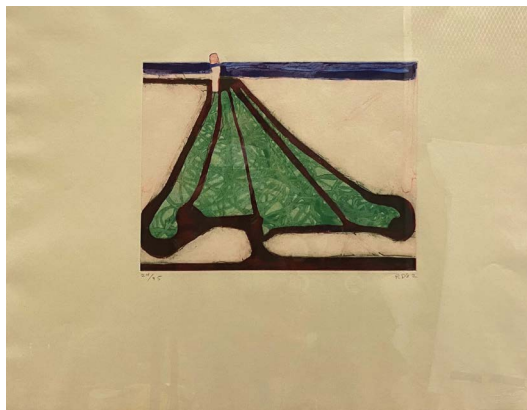




5



7



6

5 | ELIZABETH CATLETT

(American, active Mexico, 1915–2012)

Links Together 1996

Lithograph on paper

29 1/2 x 23 inches

Des Moines Art Center Permanent Collections;

Gift of the Des Moines Art Center Print Club, 2020.19

WENDY RED STAR (Apsáalooke/Crow, born 1981)

Fall, Indian Summer, Winter, and Spring,

from “The Four Seasons,” 2006, printed 2020

Series of four archival prints on paper

21 x 22 inches (each)

Des Moines Art Center Permanent Collections;

Purchased with funds from Jim and Ellen Hubbell

and the Rusty Hubbell and Ellen and Jim Hubbell

Photography Acquisition Fund, 2020.20.1–.4

DAVID HOCKNEY (British, born 1937)

A Lot More of Ann Combing Her Hair 1979

Lithograph on paper

49 1/2 x 36 inches

Des Moines Art Center Permanent Collections;

Gift of Jim and Ellen Hubbell, 2020.21

ROGER SHIMOMURA (American, born 1939)

American Guardian 2007

Lithograph on paper

31 1/2 x 43 1/8 inches

Des Moines Art Center Permanent Collections;

Gift of Jim and Ellen Hubbell, 2020.23

WALT KUHN (American, 1877–1949)

Mirabell 1925

Lithograph on paper

14 5/8 x 9 1/2 inches

Des Moines Art Center Permanent Collections;

Gift of Jim and Ellen Hubbell, 2020.26

CECILY BROWN

(British, active United States, born 1969)

Aujourd’hui Rose 2005

Four-color lithograph on paper

38 7/8 x 29 3/8 inches

Des Moines Art Center Permanent Collections;

Gift of Jim and Ellen Hubbell, 2020.31

JULIE BLACKMON (American, born 1966)

Cupcake 2007

Archival digital print

22 x 22 inches

Des Moines Art Center Permanent Collections;

Gift of Jim and Ellen Hubbell, 2020.32

6 | RICHARD DIEBENKORN (American, 1922–1993)

Green Tree Spade 1982

Color sugar lift aquatint with flat bite etching on paper

18 1/2 x 23 1/4 inches

Des Moines Art Center Permanent Collections;

Gift of Jim and Ellen Hubbell, 2020.34

RENÉ MAGRITTE (Belgian, 1898–1967)

L’Art de Vivre, frontispiece for “Le Lien de Paille”

by Louis Scutenaire, 1968

Color etching on paper

11 x 9 inches

Des Moines Art Center Permanent Collections;

Gift of Jim and Ellen Hubbell, 2020.35

JULIE MEHRETU

(American, born Ethiopia, born 1970)

Unclosed 2007

Color hard ground etching with spit bite aquatint

and drypoint on paper

41 x 50 1/8 inches

Des Moines Art Center Permanent Collections;

Gift of Jim and Ellen Hubbell, 2020.36

7 | CARA ROMERO (Chemehuevi, born 1977)

Evolvers 2019

Archival pigment print

19 x 61 1/2 inches

Des Moines Art Center Permanent Collections;

Purchased from the artist with funds from

Steven J. and Keely Rosenberg, 2020.37

With your support in 2020, the Art Center was able to serve 81,674 individuals and families through in-person activities and virtual experiences, transforming the challenges faced due to COVID-19 into new opportunities for engagement.

From gallery dialogues and lectures to in-depth object studies, downloadable artmaking projects for kids, and virtual exhibition tours, the Art Center's new virtual opportunities provide flexible access to its collection, exhibitions, and expertise.

ART ACCESS

Art access programs provided many of our community partners with contact-free, safe programming through virtual offerings, creative art kits, and instructional videos. The program benefitted community partners in many ways by sharing in the stress and workload of tackling the needs of the community during the pandemic. Nineteen organizations involving 36 programs participated in art access activities in 2020.

The Art Center provided more than 800 art kits that were accompanied with instructional videos to organizations to ensure participants had access to art materials. A partnership with Lutheran Services in Iowa highlights this collaborative effort. Elderly refugees isolated in their homes during the pandemic were provided with more than 300 art kits designed to combat loneliness and promote a sense of wellbeing and stability. Participants were given a wide range of mediums to explore including scratch art boards, paint, coloring sheets, and journals.

As part of an ongoing partnership with Children's Cancer Connection, the Art Center created monthly art videos for participating families to cultivate a space of creating and learning with each other. The art projects used everyday materials like found objects, markers, and scraps of paper to create art. Projects ranged from pop up cards, to puppets, and self-portraits and provided a sense of respite to this especially vulnerable population.

VIRTUAL TOURS

Virtual tours have been a goal for the Art Center for many years, both to increase accessibility across the metro and to expand the ability to connect with audiences across the country and globe. The tours allow visitors to click through the extensive collections as if they were at the museum. Tours of gallery spaces hosting works from the permanent collection are available, as well as several major exhibitions including *Karla Black: 20 Years* and *Black Stories*.

VIRTUAL VIEWING VIDEOS

Docent-led Virtual Viewing Videos are a new way for visitors and students to closely explore artworks in the museum's collection from practically anywhere. Exploring art with others, pointing out details often left unnoticed, facilitating meaningful conversations about art—these are some of the things that docents do best. When COVID-19 caused an abrupt suspension of in-person tours, docents began writing and recording introductions to some of their favorite works in the collection as an avenue to continue sharing art. Videos were created with the help of Museum Educator Mia Buch and a generous grant from Bravo Greater Des Moines. "Field trips to the Art Center are a major highlight for many area educators and students. Our hopes are that these videos can create similar moments of wonder and curiosity, bringing our museum to students anywhere," Buch said. The videos created this year are accessible on both the Art Center's website and YouTube channel.

"Virtual Viewing Videos are a valuable tool to teach students how to analyze and interpret art. The videos are not too long and offer great prompting questions to ignite the curiosities of the viewer."

KATIE LEEPER Art Teacher at Walnut Creek Campus
West Des Moines Community Schools



Virtual art classes made it possible for students to keep learning and stay connected to the museum.

CREATIVE CONNECTIONS

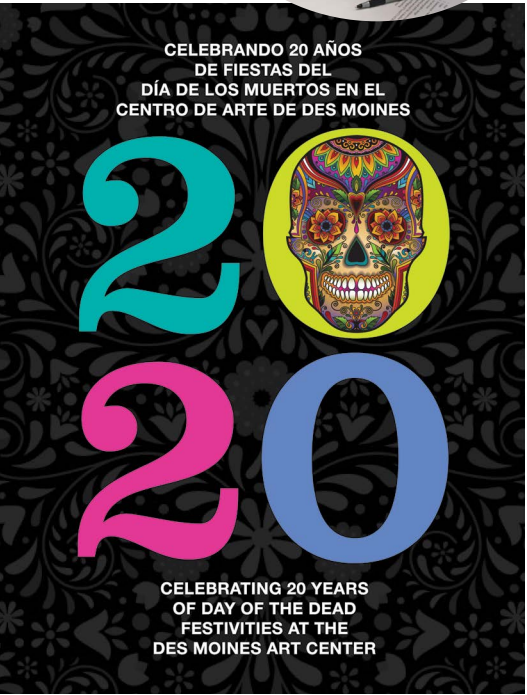
The Museum Education + Interpretation department answered the call to pivot to virtual resources and focus on community educators, parents, and caregivers when the need arose due to the COVID-19 pandemic. A major effort to offer support to teachers and folks at home with elementary-aged learners was through the creation of downloadable lesson plans available on the Art Center's website called Creative Connections.

These lessons inspire learning through step-by-step exploration of modern and contemporary artworks in the museum's collection. Creative Connections are designed around one work of art, an overarching theme, and six scaffolded activities: View, Dig, Discuss, Create, Relate, and Wonder.

The use of this program helps students build critical thinking, cultural awareness, empathy, and a connection to artwork and the human spirit. Honoring that in art there are no wrong answers, experiencing artworks provides students a chance to safely explore their own creativity and understanding of the world around them.

DAY OF THE DEAD

This year the Art Center celebrated twenty years of hosting Day of the Day festivities. Unable to hold a live celebration, to support the community and in the spirit of honoring this international tradition, the Art Center offered a host of activities, including free Ofrenda starter kits at local libraries, a Facebook Premiere featuring a commemorative film created by Vince Valdez that highlighted members of the Latinx community honored



TOP Jessica Villegas, studio arts educator, shows off some of the iconic items included in Day of the Dead activity kits. Community members were invited to pick up the kits and join in this festive celebration at home

Undeterred by the inability to hold one of the Art Center's largest community events in person, this year's Day of the Dead 20 year anniversary celebration offered a host of virtual and at home art activities.

at the event over the last two decades, photo galleries, free Day of the Dead downloadable commemorative posters, and a virtual conversation with author Lori Erickson on how different cultures process death.

Thanks to continued generous and loyal support from individuals, corporations, and foundations, the membership and development department was able create new ways to connect with our supporters.

VIRTUAL MEMBER TOURS AND HAPPY HOURS

In 2020, members of all levels were able to participate in a virtual private home collection tour of Director Jeff Fleming and his wife Carrie Marshburn-Fleming. The Flemings shared stories of how they choose to collect art as a family, as well as the meaning behind many of the works in their collection.

A “Happy Hour with Curators” allowed members to learn the creative process behind how exhibitions are curated with a virtual conversation between Curatorial Manager Laura Burkhalter and Associate Curator Jared Ledesma. Members at the Ambassador level (\$140+) had a Tangerine “lunch to-go” as part of the Art for Lunch series and participated in a virtual studio visit with 2020 Iowa Artist Rachel Cox to learn about the story behind her “Mors Scena” exhibition.

MEMBER GROUPS

Member groups reimagined the membership experience in 2020. Art Noir was able to provide several take-home kits inspired by perennial favorites, including a Trivia Night partnership with The Bartender’s Handshake and Art Noir’s Home for the Holiday Studio.

For the first time, Print Club hosted their annual meeting in a virtual setting, where it was announced that members selected the Elizabeth Catlett color lithograph *Links Together* (page 10) as the 2020 Des Moines Art Center Print Club Gift Print.

Finally, who could forget Salon 4700’s end-of-year celebration, a virtual private collection tour with Pamela Bass-Bookey and Harry Bookey? The Bookey’s generosity welcomed members to hear stories about some of the most cherished



Print Club members are enlightened on the work of artist Susan Rothenberg during a January 9 gallery dialogue led by Associate Curator Jared Ledesma. *Susan Rothenberg as Printmaker* featured more than two dozen prints by the artist from the Art Center’s permanent collections, most of which were generously gifted to the Art Center by John and Mary Pappajohn in 1991.

works in their home. Members received surprise complimentary goody boxes to commemorate the evening from Happy DSM.

2020 GALA

Finally, Art Center Trustee Rosemary Parson chaired the “Entirely Unexpected” 2020 Virtual Gala, held in September. Guests were able to pick up dinner from Tangerine and return home to watch a video highlighting the diverse artworks, artists, programming, and partnerships within the Art Center.

Director Jeff Fleming unveiled the Art Center’s new inclusion statement at the event. A portion of the proceeds from the fundraising event supported the free September 24 community event showcasing the Art Center’s collection on the exterior of the Richard Meier building and a virtual concert by Parranderos Latin Combo that was shared on social media.

Virtual meetings by Zoom made it possible for community members to connect and participate in member groups, meetings, classes, and art access programs. This evening, members were invited to an inside tour of Director Jeff Fleming and his wife, Carrie’s, personal art collection.



The foundation for our success is the continued generosity of Art Center donors. We are grateful for your vital support.

EDMUNDSON HONOR SOCIETY
Members of the Edmundson Honor Society have included the Des Moines Art Center in their will or estate plans. These individuals are leaving a legacy that will enrich the arts and culture in Iowa for years to come.

- EDMUNDSON HONOR SOCIETY MEMBERS** ESTABLISHED 2012
- Anonymous (2)
 - Emily Bahnsen
 - Bruce Barnes
 - Linda Bisignano
 - John Brady Foundation
 - Margaret Brennan
 - Joseph Cunningham
 - Richard L. Deming, M.D.
 - Jon and Mary Doidge
 - Doris M. Eby
 - Jeffrey Freude and Laurie Wolf
 - M.C. Wijkman Glickman Fund
 - Velta E. Goodwin
 - Mary Gottschalk
 - David Hurd
 - Darren R. Jirsa, D.D.S.
 - Paul Kasal and Thomas Stoops
 - Madelyn and Lyle Lynn
 - Patricia McFarland
 - Linda and Michael Menth
 - Gregg and Kathleen Narber
 - Ms. Peggy Patrick
 - Anastasia Polydoran
 - Mickey and Neal Ryan
 - Patricia and Louis Schneider
 - William E. Schuster (CA)
 - Craig and Kimberly Shadur
 - Keith W. Shaver
 - Stephen Smith
 - Stevenson Weitz
 - Willa Wenzl

ENDOWMENTS
Thanks to the generosity of the following individuals and families, ongoing annual support is generated from endowment funds. We are appreciative of this foresight in ensuring quality art, access, and programming remain a part of the Des Moines Art Center experience.

- Margaret Ann (Dudie) Ash Fund
- Pamela Bass-Bookey and Harry Bookey Moving-Image and Time-Based Art Fund
- Jaqueline and Myron Blank Exhibition Fund
- Jaqueline N. Blank Fund for Museum Education
- John Brady Foundation
- James D. Edmundson Endowment
- Fingerman Family Foundation
- Johnnie Friedman Prize Endowment Fund
- Kyle and Sharon Krause Family Art Acquisition Fund
- William Randolph Hearst Endowment for Education Fund
- Rusty Hubbell and Jim & Ellen Hubbell Photography Acquisition Fund
- Frederick James Endow Iowa Fund
- Madelyn Levitt Des Moines Art Center Permanent Endowed Fund
- Harriet S. and J. Locke Macomber Des Moines Art Center Endowment
- Mid Meredith Zuendel Endowment Fund
- R.W. and Mary Nelson Scholarship Fund
- Craig and Kimberly Shadur Endowment
- The Sharon Simmons Charitable Fund
- Robert W. (Robb) Spellman Scholarship Fund
- The Wallace Endowment Fund
- Helen J. Urban Scholarship Fund
- Toni and Tim Urban International Artist-in-Residence Fund
- The Wallace Endowment Fund

\$100,000+
Bravo Greater Des Moines
Kyle and Sharon Krause
Anna K. Meredith Endowment Trust
Principal Foundation

\$50,000 – \$99,999
John and Mary Pappajohn
Principal Financial Group

\$25,000 – \$49,999
The Bright Foundation
Ellen and James W. Hubbell III
Iowa Department of Cultural Affairs
Linda and Tom Koehn
John and Penny Krantz
Nix and Virginia Lauridsen
Jeanne Levitt
The Fred Maytag Family Foundation
Meier Bernstein Foundation
Nationwide Foundation

\$20,000 – \$24,999
Gregory and Andrea Abel
Mary K. and Daniel M. Kelly
Thomas and Linda Koehn
Steven Marquardt
Craig and Kimberly Shadur
The Trust of Keith W. Shaver

\$15,000 – \$19,999
Graham Cook and Catherine Bennett
Trudy Holman Hurd
Judith A. Lindquist Scholarship Fund I
Michael Simonson and Jalesky Hernandez
National Endowment for the Humanities
National Endowment for the Arts

\$10,000 – \$14,999
Leslie Babich and Stacy Wanderscheid
Pamela Bass-Bookey and Harry Bookey
Margaret Brennan
Sandra and C. Dean Carlson
Homesteaders Life Company
Patty and Jim Cownie
Fritz James
Darren R. Jirsa, D.D.S.
Dan and Nicolette Keough
Anastasia Polydoran
Janis and John Ruan III
Mary and Stanley Seidler
Douglas and Deborah West



John Ruan Foundation Trust
W. T. and Edna M. Dahl Trust
Mary and John Pappajohn
Scholarship Foundation
Meredith Corporation Foundation
Seidler Foundation

\$5,000 – \$9,999
ASK Studio
American Equity Investment Life Insurance Company
BNIM Architects
Mary Kay and Douglas Bruce
Galerie Gisela Capitain
Grinnell College
Richard L. Deming, M.D.
EMC Insurance Companies
EquiTrust Life Insurance Company
MidAmerican Energy
Faegre Drinker LLP
Dr. Louis and Lois Fingerman
Gartner Family Foundation
Barbara and Michael Gartner
Jason and Athamandia Gross
Bruce Hughes and Randall Hamilton
Iles Funeral Homes
Harriet Hubbell
Fred and Charlotte Hubbell
Hy-Vee, Inc.
The Lint Companies
Patricia J. McFarland
Randy McMullin
Renee Montz
Mark and Jill Oman
John Deere Des Moines Operations
Rosemary and Jonathan Parson
John and Lisa Rhodes
Gail Richards
Steven and Keely Rosenberg
Sharon Simmons
Gordon Smith
Substance Architecture
Sally Titus
Bankers Trust
Henry G. and Norma A. Peterson Charitable Trust
Green State Credit Union
Toni and Tim Urban
Voya Financial Advisors, Inc.
Mary Ann and James Wallace
Willis Automotive
Nancy Woods
Workiva
Dennis and Diane Young

\$3,000 – \$4,999
Babette Brenton
Cheryl and Bill Bergren
Sue Rutledge Brenton and J.C. "Buzz" Brenton
Joseph and LaNae Ceryanec
Jeff Chelesvig
Eric Faust
Charles Gabus Ford
Stanly and Regina Glawe
FBL Financial Group
Michael Myszewski and Martha James

Dr. James and Mary Ellen Kimball
Jan and Karl Knock
Keith and Diane Krell
Katya Gibel Mevorach
and Yorame Mevorach
Fred and Linda Nesbit
Peter and Patricia Pashler
Jorgen and Martha Rasmussen
Melinda and Charles Ruperto
Bruce and Barbara Sherman
Nicola Mendenhall and Wendell Speers
Robert L. and Ruth E. Wiese Trust
Kay Ward
Mary Gottschalk and Kent Zimmerman

\$1,250 – \$2,999

Katherine Elsner and Steve Adelman
Eva and Michael Anderson
Belin McCormick, P.C.
Margo and Donald Blumenthal
*Woodward Brenton and Michelle Book
Lois Bullinga
Mary Chapman
Paul and Michelle Cownie
Douglas Dornier and Carole Villeneuve
Marshall and Judith Flapan
James and Allison Fleming
Carrie Marshburn-Fleming
and Jeff Fleming
Thomas and Cathy Goldman
Ralph and Sylvia G. Green
Charitable Foundation
Marty Gross
Foster Group
David and Stephanie Haas
Katherine and Andrew Hauser
Victoria Herring and Mark McCormick
Holmes Murphy & Associates, Inc.
Mark Holub and Wes Hunsberger
Charles and Jaina Johnson
Robert Josten
Tom and Mary
Sue and Todd Mattison
Frank Miller Scholarship Fund,
Drake University
Modern Art
Gregg and Kathleen Narber
David Pearson
Muriel and Jim Pemble
Christa and Matthew Phillips
Kent and Virginia Porter
Dr. Mary and Mr. Suku Radia
David and Karen Safris
Maureen Mondora and Sean Sexton
Robert and Cherie Shreck
John Spinner and Tiffany Nagel Spinner
Kathleen and J. D. Stahl
Michael and Simma Stein
Charles and Peggy Strief
Robert and Jane Sturgeon
Cheryl and Thom Tuttle
Tim Hickman and Frank Vaia
F.W. and Emily Weitz
Donald Young
Jeffrienne and Eytan Young
Karen Young
Alan Zuckert

\$550 – \$1,249

Tony Braida and Mark Babcock
Wayne and Delores Bauman
Amy Beattie
Steven Held and Susan Breen-Held
Laurine and David Briden
Matthew Busick and Elizabeth Brown
John and Julie Bruntz
Robert and Marlene Buckley
Chris and Zorica Burch
Adam and Courtney Clarke
Kaye Condon
Michael and Julie Coppola
Patricia and Stephen Dryden
Katherine and Herbert Eckhouse
Karen Engman
Katherine Elsner and Steve Adelman
Alan and Julie Feirer
Jann Freed and John Fisher
Tom and Rachel Formaro
Kate Garst
Richard and Eileen Gloor
Charles and Janet Haas
Christine Hadley
Joe Hintzsche
J. William and Mary Holtze
Michael and Debbie Hubbell
John and Sally Irving
Dale J. Jansen
Joseph Jester
Jeff and Jane Johannesen
James and Amy Kern
Josh and Susie Kimelman
Lawrence Kirsner
Sandra Koll
Frederick and Joyce Lock
Ed and Elizabeth Mansfield
Kent and Sheila Mauck
William and Dorothy McGinnis
Stanley Miller
Donald and Marcia Miller
Eric Heininger and Tiffani Milless
Susan and Larry Moore
Bernard and Brenda Mouw
Gerard and Mary Lou Neugent
Brett Douglas and Erin Olson-Douglas
Donald and Elizabeth Pink
Roger Scholten and Iris Post
Robert and Rose Mary Pratt
Richard and Cindy Raabe
Alvin and Sue Ravenscroft
Peter and Rita Reed
Dianne Riley
Karl Ritland
Kent and Janice Rosenberg
Neil and Debra Salowitz
Richard and Carolyn Santi
Sam Scheidler
Steven Jayne and Karen Shaff
Kevin and Amie Shires
Jim Spevak
Thomas Jackson and Joanne Stevens
Phil Roeder and Mary Tabor
Carolyn Lynner and Keith Thornton
Michael and Diane Versackas
Elizabeth and Taylor Webb
Eric and Jamie West
Leigh Wichern

James and Ann Willer
Robert and Jean Williams
Annabel Wimer
Jeffrey Freude and Laurie Wolf
P.D. Jenison and Irving Wolfe

\$250 – \$549

Gary and Mary Alice Amerman
Rick Adams
Liz and David Adelman
Joseph Ambrosek
Scott and Jennifer Anderson
Anonymous
Tricia Arason
John and Susan Aschenbrenner
Kelli and Bruce Baker
Cathy and Stephen Balderson
Sally and Dennis Bates
Mary Ann Beard
James Bell
Carol and David Bodensteiner
Martha Boesenberg
Arden and Margaret Borgen
Quentin and Inez Boyken
Larry and Elizabeth Bredeson
Claudia and Christopher Brown
Sandra Bruggemann
Susan Madorsky
and Edward Bruggemann
Lee Buckley
Cooper Lewis and Lauren Burgeson
Bryan Noble and Tim Burgess
John and Ellen Burnquist
Tara and Edgard Camacho
Crom and Mary Campbell
John and Lori Chesser
Rose Clark
Thomas Swartwood and Terri Combs
Kevin and Mollie Cooney
Brett Majors and Keely Coppess
Joe and Cyndy Coppola
Sean and Kelly Courtney
Christina Dahl
McKinna Daugherty
Michael and Ronda Davis
Lettie Prell and John Domini
Patricia Donhowe
Philip Dorweiler
Priscilla Gilbert and Jim Dunn
Stephanie and Samuel Early
Roy and Averyle Ehrle
James and Betty Erickson
John Erpelding
Ken and Louise Esveld
Jessica and Robert Feeney
Linda and Lynn Ferrell
Ann Connors and Thomas Fesenmeyer
Edwin McIntosh and Jacque Fletcher
Rachel Formaro
Sean Parker Foundation
Susan Frambach
Carol and Gerry Frank
Carole Frier
Bell-Pullen Arts & Culture
Scholarship Fund
Leann Treloar and Scott Galenbeck
Tatiana Giacinti

Maggie and Justin Glisan
Nancie and Garry Gloschen
David and Linda Gobberdiel
Austin Gohlmann
Erika Owen and Joseph Gonzalez
Bonnie Green
David and Linda Grieve
Michele and *Barry Griswell
Luke and Heather Groben
Julie and Jason Hahn
Janelle Hall
Ron and Carole Hallenbeck
Terry and Jim Hammer
David and Dawn Hanson
Molly Hanson
Patricia Chong and Dennis Hanssen
Rick and Mary Harper
Brian Murray and Jeff Hartman
Diane and Michael Heid
Douglas and Barbara Hein
James Austin and Crystal Helbing
John and Susan Hemminger
Christine and Steve Hensley
Carla Herling
Jason Nunemaker and Carla Herling
David Marquette and Gil Hernandez
Eric Gaby and Kevin Hill
Christine and Terry Hines
Michelle McGovern and Jack Janda
Kerri and Dan Johannsen
Alexander and Wilhelmina Johnson
Stephan and Thomasine Johnson
Marie-Louise and Mark Kane
Taylor Plucker and Emilie Katter
Bruce and Susy Kelley
Ted and Stephanie Kempf
Amy and Joe Kimball
James Reese and Peggy Van Kirk
Darca Boom and Dennis Klein
Bill and Beth Koenig
Rod Kruse
Alison and Steve Lang
Tracy Levine
Thomas and Jean Logan
Lori and Brad Long
Roberta Vann and Fred Lorenz
Dennis Goldford
and Sharon Louis-Goldford
Jeanne and Mark Lyle
Shannon Maddy
John and Cyril Mandelbaum
Paul and Lynn Mankins
Alan Maximuk
Warren and Margaret May
Karen McGregor
Robert McLearn Jr.
Anne Price and Jeffrey McMahon
Ann-Charlotte Wade and Jeffrey Meyer
Midwest Clothiers LLC
Jim and Barbara Miles
James and Pam Moos
Janet L. Mootz
Margo and Scott Morgan
Paul and Gloria Morris
Michael and Sasha Mudlaff
Jon Koehn and Maribeth Mulready
William and Joan Nassif

LaVonne Neerland
Rick and Liz Neumann
Judith Nicholson
Roy and Mary Nilsen
Andrew and Barbara Nish
Mary and Todd O'Brien
Sam and Sarah O'Brien
Sarah Garst and Jeff O'Donnell
Eileen O'Meara
Thomas Press and Donna Paulsen
Judy and John Perkins
Dean and Diann Peyton
William Pollak
Treva Reimer and Keith Ratzlaff
Samuel and Michelle Rebelsky
Jack Rehm
Elizabeth Lidgett and Nick Renkoski
Amanda and Mike Reynal
Roger Brooks and Sunnie Richer
Edward Loeb and Bobbi Rietz
Kevin and Robin Riggins
Joseph and Karen Romano
Jessica Rooker
Sol and Maria Rosenbaum
Sara and Scott Rosenberg
Ric Collier and Aden Ross
DelRae Roth
Deidre Fudge and Barb Royal
Christine Lauridsen Sand and Rob Sand
Claudia and Paul Schickler
Deb Wiley and John Schmidt
Joseph Schneider
Patricia and Louis Schneider
Mary Von Schrader
Amy Scott
Jaey and Brenda Sedlacek
Ryan Clutter and Vicki Sehgal
Mark Movic and Susan Skinner
Artis Reis and Mark Smith
Nicole and Chester Smith
Maryanne and Robert Sobiech
Shane and Lora Sonberg
Ryan and Susan Staiert
Wendy and Dave Steffes
Betsy Rubiner and Dirck Steimel
John and Stefanie Stenberg
Allan and Marilyn Stokes
Stephanie Roscoe and Penelle Strum
David Yepsen and Mary Stuart
Mary Stuart
Mathilde Brown Swanson and Richard Swanson
Robert and Sandra Tatge
John Taylor
Sarah Clark and John Thomas
Ted Thoms
Shayla Timm
Paula Smith and Paul Tjossem
Nancy Norman and Keith Uhl
Arif Valji
Lisa Veach
Susan and Carl Voss
Anne and William Waskom
Ivan and Anne Webber
Steve and Linda Weitz
Douglas and Sarah Wells
Sara Wohler

Sumner and Karen Worth
Ellen Yee
Dan Zimmerman and Jennifer Graham
Zimmerman
April and Brittany Zingham

TRIBUTE GIFTS

The following individuals were celebrated by gifts made in 2020. We are grateful their loved ones chose the Art Center to recognize them in this meaningful way.¶

IN HONOR OF

April Zingham
Jeanne Levitt
Lois and Louis Fingerman
Pam Bass-Bookey and Harry Bookey

IN MEMORY OF

Aileen Thompson
Charles D. Anderson
Cynthia Rehm
Dana Percival
Frank Fogarty
Harriet Macomber
James Demetrior
Jan L. Berg Kruse
Jane Lemair
Jeannette Weichel
Joseph Boehm
Lori Kalainov
Margaret Durst
Maynard Reece
Michael Eberle
Milton L. Bunce
Richard Black
Sandra Zimmerman
Shirley Michel
Stanley Richards
William and Natalie Brenton

IN-KIND SUPPORT

EMC Insurance Companies
Marta Couch
John and Penny Krantz
Melanie Parks and Michael Hopson
Sheena and Frank Thomas
Iowa Public Radio
Boesen the Florist

*Deceased

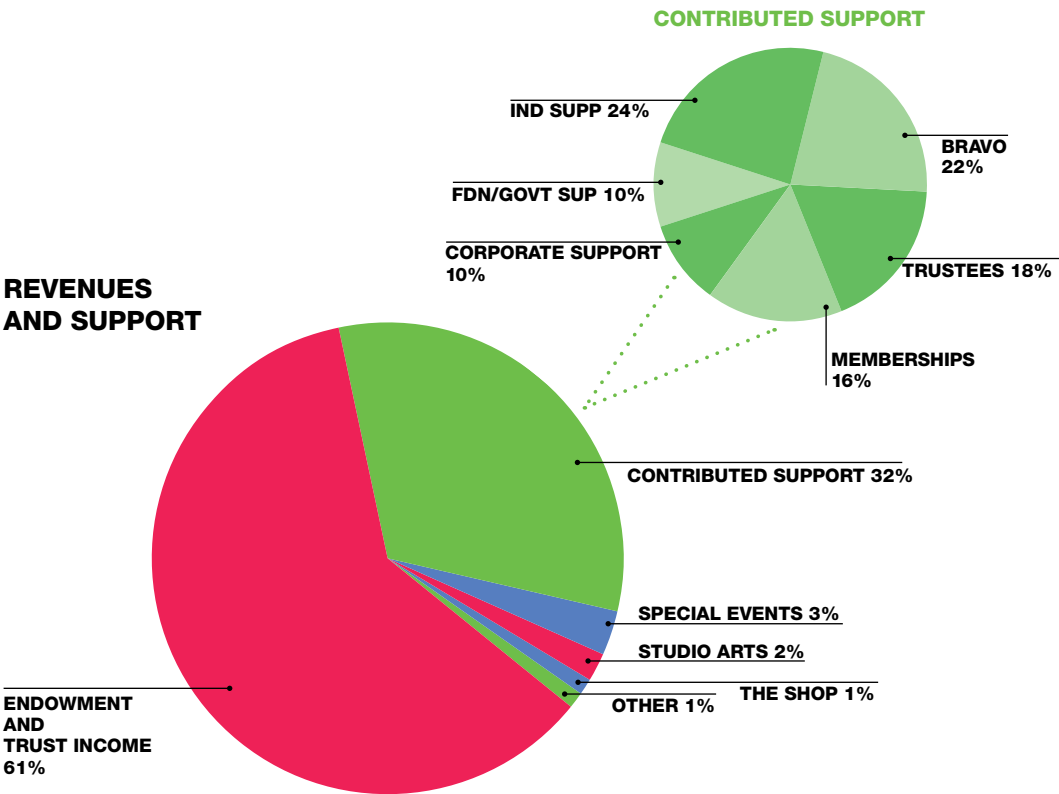
The Art Center makes every effort to ensure the accuracy of names and gift amounts. We apologize for any errors. Please contact Director of Development Tiffany K. Nagel Spinner at tspinner@desmoinesartcenter.org or 515.271.0338 or to inform us of any changes or omissions.



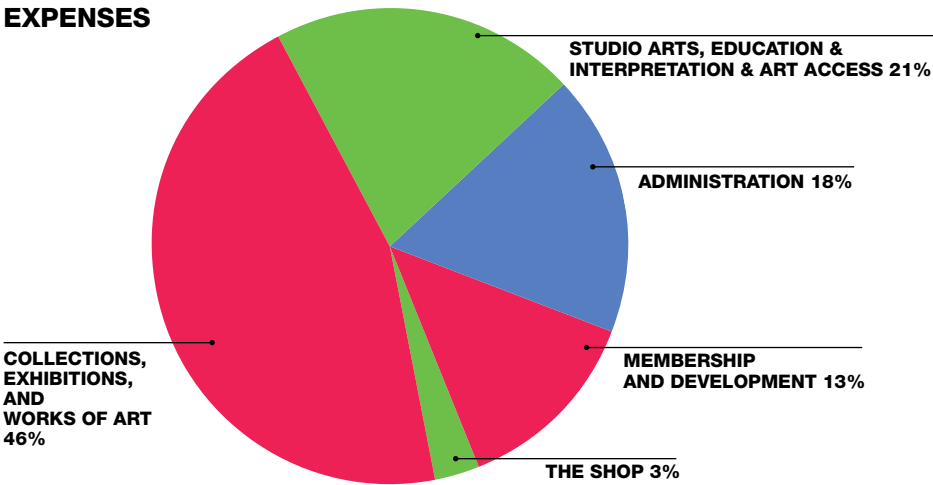
2020 FINANCIAL STATEMENT*

EDMUNDSON ART FOUNDATION INC.

REVENUES AND SUPPORT



EXPENSES



*UNAUDITED

A family enjoys Nick Cave's *Rescue*, 2013, in the *Black Stories* exhibition.

2020 FINANCIAL SUMMARY

TOTAL ASSETS	\$124 MILLION
TOTAL NET ASSETS	\$122 MILLION
OPERATING REVENUES AND SUPPORT	\$6.5 MILLION

BOARD OF TRUSTEES

EDMUNDSON ART FOUNDATION, INC.

2020 BOARD OF TRUSTEES

Graham Cook
PRESIDENT
Darren Jirsa
VICE PRESIDENT
Renee Montz
SECRETARY
Joseph H. Ceryanec
TREASURER
James Wallace
CHAIRPERSON AND EX-OFFICIO

Andrea Abel
Pamela Bass-Bookey
Jeff Chungath
Michelle Cownie
Richard Deming
Jason Gross
Ellen Hubbell
Bruce Hughes
Mary Kelly
Dan Keough
Raynard Kington
Tom Koehn
Josh Mandelbaum
Warren May
Patricia McFarland
Rosemary Parson
Wayne Reames
Craig Shadur
Sharon Simmons
Mike Simonson
Doug West
Mertze Anderson

2020 HONORARY TRUSTEES

Woodward G. Brenton*
Elaine Estes
Lois Fingerman
Louis Fingerman
Mell Meredith Frazier
Johnnie Friedman
Barbara Gartner
Elise Shuler Geraghty
Michele Griswell
Christine Hensley
James Hubbell, III
Dale Jansen
Charles S. Johnson
Lana Jones-Gould
John M. Krantz
Kyle Krause
Jeanne Levitt
Harriet Macomber*
Marvin E. Mazie
Tom Meredith
Judith Milligan
Nancy Powell Montgomery
Gregg Narber
John Pappajohn
Mary Pappajohn
Katie Peverill
Stacy Polydoran
Suku Radia
Cynthia Rehm*
Gail Richards
Lucia R. Riddle
Lou Schneider
Mary Seidler
Gaylord Torrence
Thomas N. Urban*
Timothy J. Urban
Toni Urban
William F. Vernon*
Fred Weitz
Dennis E. Young

*Deceased



STAFF

2020 STAFF

ADMINISTRATION
Jeff Fleming
DIRECTOR

FACILITIES
Steve Zamzow
FACILITIES DIRECTOR
Brian Evans
LEAD FACILITIES ASSOCIATE
Trevor Neil
LEAD EVENTS & FACILITIES ASSOCIATE
Gene Swan
FACILITIES ASSOCIATES

FINANCE
Cheryl Tuttle
DIRECTOR OF FINANCE AND OPERATIONS
Sarah De Santis
ADMINISTRATIVE & PAYROLL MANAGER

CURATORIAL
Laura Burkhalter
CURATORIAL MANAGER
Jared Ledesma
ASSOCIATE CURATOR

REGISTRATION
Mickey Ryan
CHIEF REGISTRAR
Megan Cohen
ASSOCIATE REGISTRAR
Sydney Royal-Welch
ASSOCIATE REGISTRAR

INSTALLATIONS
Jay Ewart
CHIEF PREPARATOR
Mindy Meinders
CONSERVATION TECHNICIAN & WORKS ON PAPER COORDINATOR
Jeff Ashe
Tom Rosborough
INSTALLATION TECHNICIANS

MUSEUM EDUCATION & INTERPRETATION
Jill Featherstone
DIRECTOR OF EDUCATION & INTERPRETATION
Mia Buch
MUSEUM EDUCATOR

STUDIO EDUCATION
Tracy Duran
DIRECTOR OF STUDIO ARTS, COMMUNITY ACCESS, AND INCLUSION
Alex Grapp
STUDIO ARTS MANAGER
Emily Buchanan
STUDIO ARTS ASSISTANT
Jessica Villegas
STUDIO ARTS EDUCATOR

Rachael Jackson
COMMUNITY ACCESS PROGRAM MANAGER
Travis Gingerich
CERAMICS MONITOR

INFORMATION TECHNOLOGY
Robert Reeves
SYSTEMS MANAGER
Jeff Waldschmitt
DATA SYSTEMS MANAGER

MARKETING AND EXTERNAL AFFAIRS
Jordan Powers
DIRECTOR OF EXTERNAL AFFAIRS
Anne McLuckie
DIGITAL MEDIA MANAGER
Grace Braga
RENTAL & EVENTS MANAGER
Debra Kurtz
EVENTS EXPERIENCE COORDINATOR

MEMBERSHIP AND DEVELOPMENT
Tiffany Nagel Spinner
DIRECTOR OF DEVELOPMENT
Julia Mason Gray
MANAGER OF MEMBERSHIP & VOLUNTEER INITIATIVES
Andrea Vaage
GRANTS MANAGER
Elizabeth Hellman
MEMBERSHIP & DATABASE ADMINISTRATOR

THE SHOP
Ellen O'Neil Harris
SALES MANAGER
Lauren Kallemyn
Mary Lawler
SALES ASSOCIATES

SECURITY & OPERATIONS
Brett Neiderhauser
DIRECTOR OF SECURITY & VISITOR EXPERIENCE

Ted Brubaker
Chris Tucker
Eduardo Bolaños
LEAD OFFICERS
Mike O'Neal
DOCK OPERATIONS MANAGER
Myron Anderson
Luke Belknap
Ralph Briggs
Andrew Buch
Mackenzie Costello
Brittany Brooke Crow
Monica de Melo Dreasher
Thomas Dodge
Trudy Dolezal
Stephanie Eckermann
Ethan Edvenson
Leeanne Faber
Madalyn Fusco
Eileen Gloor
Bryan Grube
Brian Hutzell
Andrew Jones
Ann Koopal
Nicholas LaPole
Joshua Limón
Ryan Lombard
Cisiley Mills
Rebecca Norris
Isaac Oats
Zachary Quick
Chance Reeves
Dennis Stanton
Loretta Tarpin
Katelynn Tracy
Zoe Violett
SECURITY OFFICERS
Inta Garrett
Ken James
VISITOR EXPERIENCE ASSISTANTS

HUMAN RESOURCES
Denise Hague
DIRECTOR OF HUMAN RESOURCES

The names on this list represent staff employed at the Art Center as of December 31, 2020.

EDMUNDSON ART FOUNDATION, INC.
4700 GRAND AVENUE
DES MOINES, IOWA 50312

DES
MOINES
ART
CENTER

ENTIRELYUNEXPECTED

Non-Profit
U.S. Postage
PAID
Des Moines, IA
Permit No. 2881



Extensive wayfinding routes, signage, and visual messages helped create a safe environment so visitors could return to the galleries in person. This clever rendition of the Art Center's John Singer Sargent painting, *Portraits de M.E.P. ... et de Mlle L.P. (Portraits of Edouard and Marie-Louise Pailleron)*, was created by Applied Art & Technology to remind visitors of the importance of six foot social distancing.