

DES
MOINES
ART
CENTER



PRINT CLUB AVAILABLE COMMISSIONED PRINTS

Commissioned Print 2022: Matthew Willie Garcia



Matthew Willie Garcia (American, born 1985)
States of Existence, 2022
Mokuhanga; 8 3/4 x 11 3/4 in.
Edition of 50 with 5 artist's proofs
Print Club members: \$300; non-members \$375



Matthew Willie Garcia is a printmaker whose work moves far beyond the traditional print media, which includes screen printing, mokuhanga, projection-mapping, animation, and large-scale installation. Drawing on his love of science and science fiction, Garcia explore his queer existence and the unknowable qualities of the universe. Garcia uses his knowledge of printmaking to explore these themes through color abstraction, the graphic image, and nonrepresentational forms.

Garcia is a California born printmaker who is currently living and working in Kansas City, MO and Lawrence, KS. He received his B.F.A. in Printmaking from the Kansas City Art Institute and his M.F.A. from the University of Kansas. Garcia has shown his work regionally throughout the Midwest. Most notably his work was included as part of the "Queer Abstraction" exhibition at the Nerman Contemporary Museum of art, "Star Children" exhibition at the Bradbury Art Museum and is currently on display at the Des Moines Arts Center as part of the "Immersive" exhibition. His work has also been shown internationally as part of "Sumi-Fusion" Mokuhanga exhibition in Nara, Japan and is shortlisted for the 2022 On Paper exhibition in Barcelona, Spain. Garcia is currently the Studio Manager at the Lawrence Arts Center in Lawrence, KS.



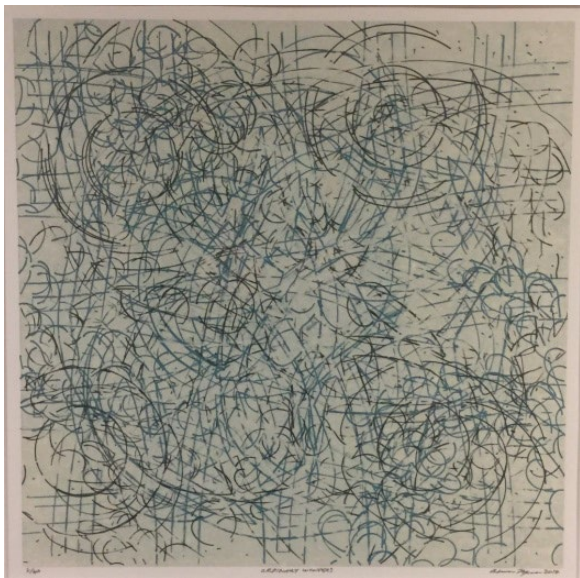
Justin Favela (American, born 1986)
Taco Pizza Harvest, 2021
Screenprint; 8 × 11 7/8 in. (20.3 × 30.2 cm.)
Edition of 50 with 5 artist's proofs
Print Club members: \$300; non-members \$375



Gina Adams (American, born 1965)
American Progress, 2019
Four-layer silkscreen with embossment; 9 × 12 in. (22.9 × 30.5 cm.)
Edition of 60 with 5 artist's proofs
Print Club members: \$300; non-members \$375



Heeseop Yoon (Korean, born 1976)
Still Life with Wires, 2018
Etching on paper; 15 x 13 inches, 10 x 8 inch plate
Edition of 60 with 5 artist's proofs
Print Club members: \$300; non-members \$375



Clarence Morgan (American, born 1950)
Ordinary Wonders, 2017
Three-color lithograph and screen print; 12 x 12 inches (image)
Rives BFK White Paper Edition of 60 with 5 artist's proofs
Print Club members \$300; Non-members \$375



Laurel Nakadate (American, born 1975)
Tucson, Arizona #3, from the Star Portraits series, 2011 (printed 2015)
Type-c digital print, 7 5/16 x 11 inches (image)
Edition of 60 with 5 artist's proofs
Print Club members \$400; Non-members \$500



Ignatius Widiapradja (American, born Indonesia 1960)
Four Quartets, 2012
Archival Digital Print; 7 x 10.5 inches (image)
Edition of 60 + 5 artist's proofs
Print Club members \$150; Non-members \$188



Dario Robleto (American, born 1972)
The Sky, Once Choked with Stars, Will Slowly Darken (Nelson), 2011
Archival Digital Print; 8 x 8 inches (image)
Edition of 60 + 5 artist's proofs
Print Club members \$300; Non-members \$375



Endi Poskovic (Bosnian-American, born 1969)
River Landscape with Salty Air in Green, 2006
Color woodcut on paper; 7 x 11 inches (image)
Edition of 75 + 5 artist's proofs
Print Club members \$150; Non-members \$188



Mary Miss (American, born 1944)
Photo Drawing (Fleur Bridge), 1996
Digital Iris on paper; 11 5/8 x 8 13/16 inches (sheet)
Edition of 50 with 5 artist's proofs
Print Club members \$200; Non-members \$250

All images: Des Moines Art Center Print Club Commissioned Prints
All photography: Rich Sanders, Des Moines, Iowa