

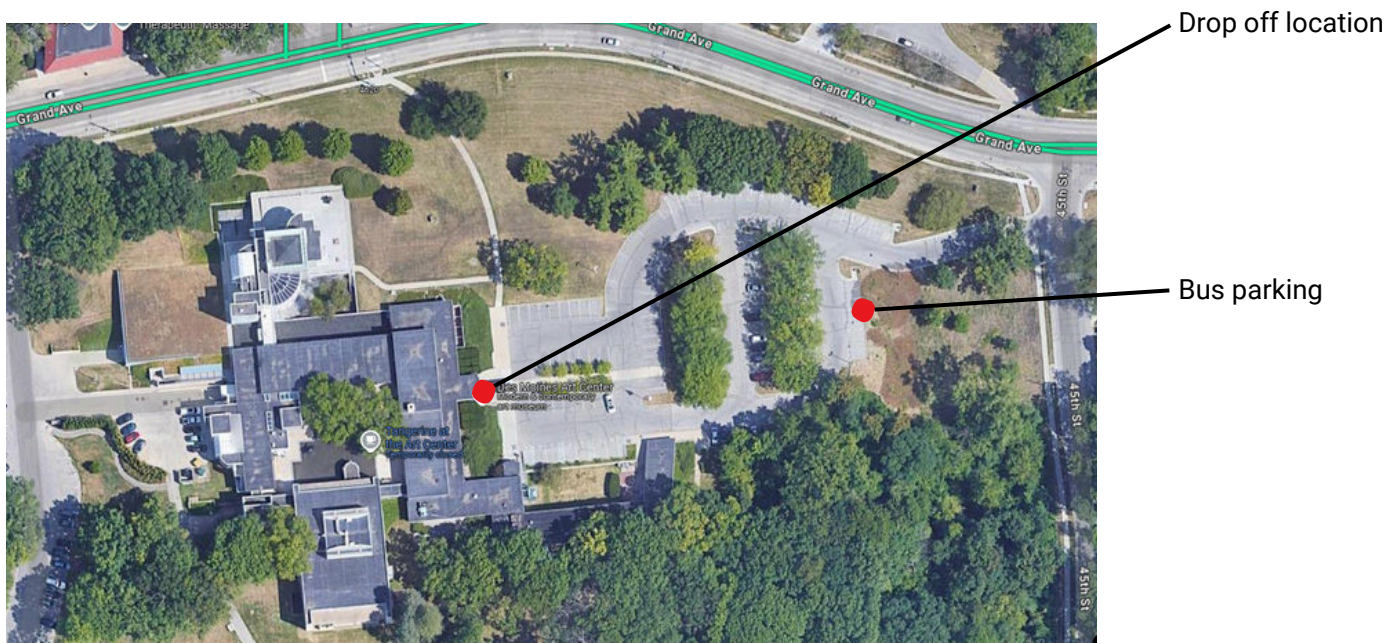


Arrival & Bus Parking Information

Des Moines Art Center - 4700 Grand Ave

Busses should drop students off at the museum main entrance, then park in the lowest tier of the parking lot. Drivers are welcome to join the group for the tour.

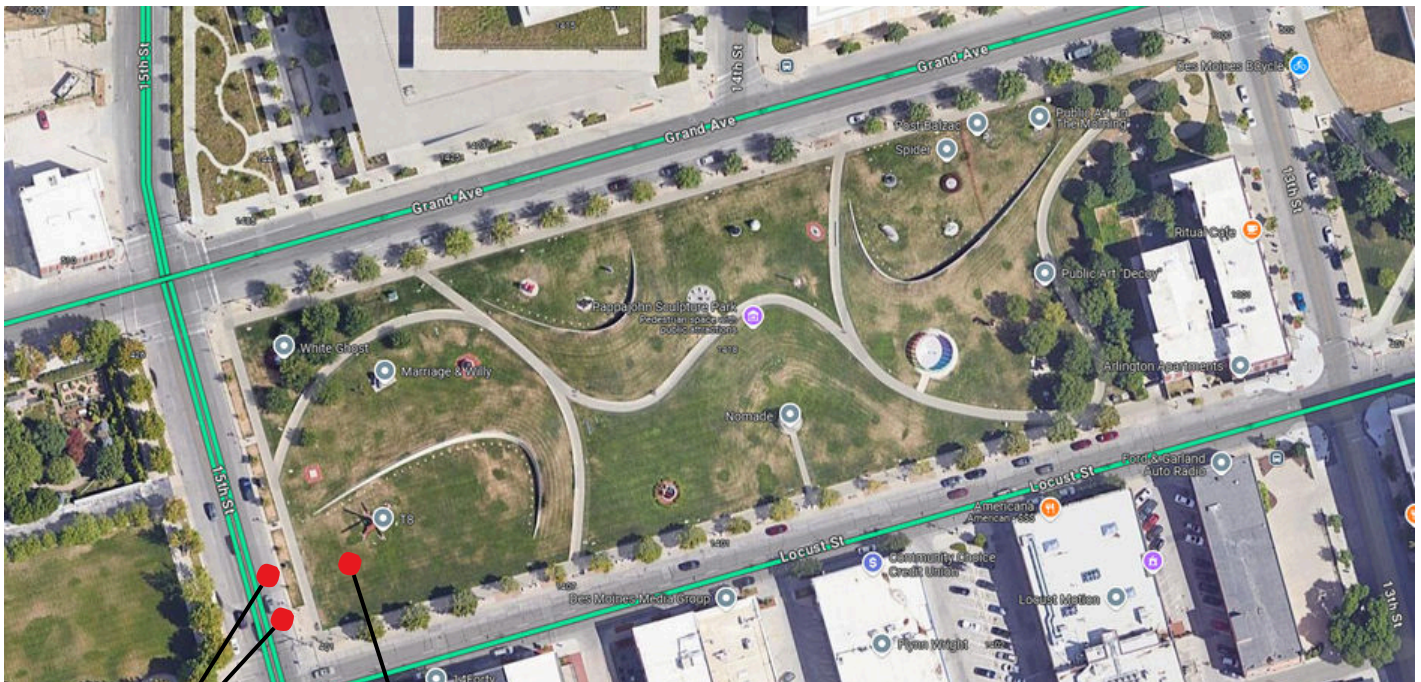
An accessible entrance can be found just south (or to the left) of the main museum doors. Adjacent to the Education entrance, there is a glass elevator which has an accessible ramp. The education desk attendant will guide your group from that entrance into the museum.



Sculpture Park - 1330 Grand Avenue

Busses should park at the reserved spaces on the right hand side on 15th Street just North of Locust Street. Students should be dropped off here, and tours will begin near the large red Mark di Suvero T8 sculpture.

There are no public restrooms or drinking fountains at the Sculpture Park.



Bus parking

Tour start: Mark di Suvero's T-8

